

Anti-Clathrin light chain (CLTA) Mouse Monoclonal Antibody [Clone ID: OTI2D12]

Catalog Number: M05796-1

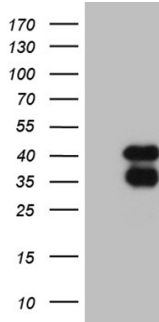
Overview

Product Name	Anti-Clathrin light chain (CLTA) Mouse Monoclonal Antibody [Clone ID: OTI2D12]
Reactive Species	Human, Mouse, Rat
Description	Boster Bio CLTA mouse monoclonal antibody, clone OTI2D12. Catalog# M05796-1. Tested in IHC, WB. This antibody reacts with Human, Mouse, Rat.
Application	IHC, WB
Clonality	Monoclonal OTI2D12
Formulation	PBS (pH 7.3) containing 1% stabilizing protein, 50% glycerol and 0.02% sodium azide. This antibody is supplied in a stabilized formulation. Compatibility with conjugation reactions depends on the chemistry of the conjugation method used. For conjugation methods that are not compatible with the stabilizing components present in this formulation, a carrier-free antibody format is required.
Storage Instructions	Store at -20°C as received.
Host	Mouse
Uniprot ID	P09496

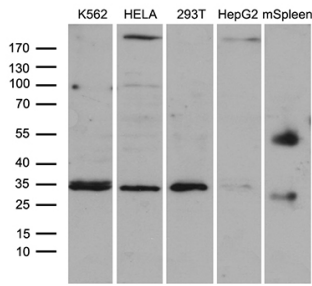
Technical Details

Immunogen	Full length human recombinant protein of human CLTA (NP_001824) produced in E.coli.
Isotype	IgG1
Concentration	1 mg/ml
Purification	Purified from mouse ascites fluids or tissue culture supernatant by affinity chromatography (protein A/G)
Suggested Dilutions	WB 1:500~2000 IHC 1:2000

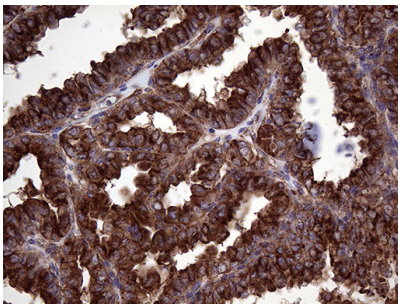
Anti-Clathrin light chain (CLTA) Mouse Monoclonal Antibody [Clone ID: OTI2D12] (M05796-1) Images



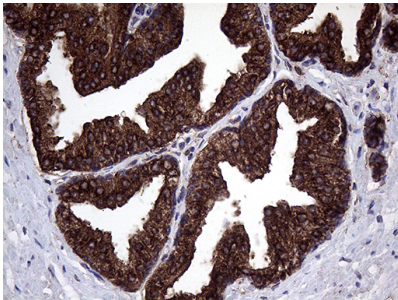
HEK293T cells were transfected with the pCMV6-ENTRY control (Left lane) or pCMV6-ENTRY CLTA (Right lane) cDNA for 48 hrs and lysed. Equivalent amounts of cell lysates (5 ug per lane) were separated by SDS-PAGE and immunoblotted with anti-CLTA (1:2000).



Western blot analysis of extracts (35ug) from 4 different cell lines and mouse spleen tissue lysate by using anti-CLTA monoclonal antibody (1:500).

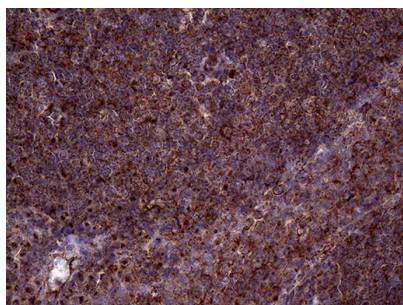


Immunohistochemical staining of paraffin-embedded Carcinoma of Human thyroid tissue using anti-CLTA mouse monoclonal antibody. (Heat-induced epitope retrieval by 1mM EDTA in 10mM Tris buffer (pH8.5) at 120°C for 3min)



Immunohistochemical staining of paraffin-embedded Carcinoma of Human prostate tissue using anti-CLTA mouse monoclonal antibody. (Heat-induced epitope retrieval by 1mM EDTA in 10mM Tris buffer (pH8.5) at 120°C for 3min)

Immunohistochemical staining of paraffin-embedded Human tonsil within the normal limits using anti-CLTA mouse monoclonal antibody. (Heat-induced epitope retrieval by 1mM EDTA in 10mM Tris buffer (pH8.5) at 120°C for 3min)



Submit a product review to Biocompare.com

Submit a review of this product to Biocompare.com to receive a \$20 Amazon.com giftcard! Your reviews help your fellow scientists make the right decisions. Thank you for your contribution.



Anti-Clathrin light chain (CLTA) Mouse Monoclonal Antibody [Clone ID: OTI2D12]

For Research Use Only. Not for use in diagnostic procedures.