

## Anti-LIM1 (LHX1) Mouse Monoclonal Antibody [Clone ID: OTI2D5]

Catalog Number: M05816

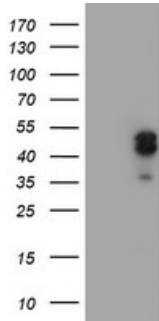
### Overview

Product Name	Anti-LIM1 (LHX1) Mouse Monoclonal Antibody [Clone ID: OTI2D5]
Reactive Species	Human, Mouse, Rat
Description	Boster Bio LHX1 (LIM1) mouse monoclonal antibody, clone OTI2D5 (formerly 2D5). Catalog# M05816. Tested in FC, IF, IHC, WB. This antibody reacts with Human, Mouse, Rat.
Application	Flow Cytometry, IF, IHC, WB
Clonality	Monoclonal OTI2D5
Formulation	PBS (PH 7.3) containing 1% BSA, 50% glycerol and 0.02% sodium azide.
Storage Instructions	Store at -20°C as received.
Host	Mouse
Uniprot ID	P48742

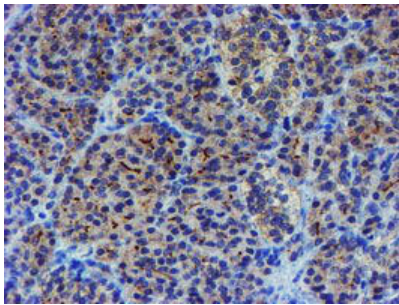
### Technical Details

Immunogen	Human recombinant protein fragment corresponding to amino acids 100-362 of human LHX1 (NP_005559) produced in HEK293T cell.
Isotype	IgG1
Concentration	0.75 mg/ml
Purification	Purified from mouse ascites fluids or tissue culture supernatant by affinity chromatography (protein A/G)
Suggested Dilutions	Dilute the sample so that the expected range of concentrations fall within the detection range of this kit. If the expected range of concentration is unknown, a pilot test should be conducted to decide the optimal dilution ratio for your samples. Some PubMed article(s) citing the expression level of this target are as follows:

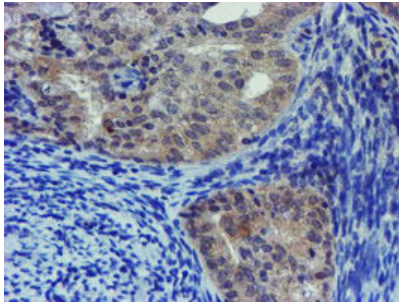
## Anti-LIM1 (LHX1) Mouse Monoclonal Antibody [Clone ID: OTI2D5] (M05816) Images



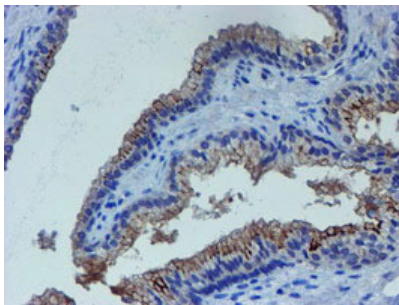
HEK293T cells were transfected with the pCMV6-ENTRY control (Left lane) or pCMV6-ENTRY LHX1 (Right lane) cDNA for 48 hrs and lysed. Equivalent amounts of cell lysates (5 ug per lane) were separated by SDS-PAGE and immunoblotted with anti-LHX1.



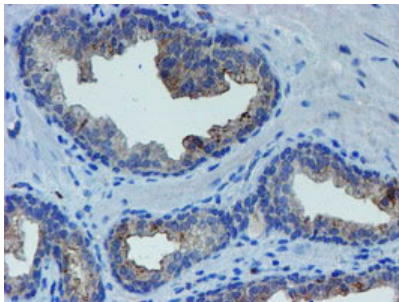
Immunohistochemical staining of paraffin-embedded Human pancreas tissue within the normal limits using anti-LHX1 mouse monoclonal antibody. (Heat-induced epitope retrieval by 10mM citric buffer)



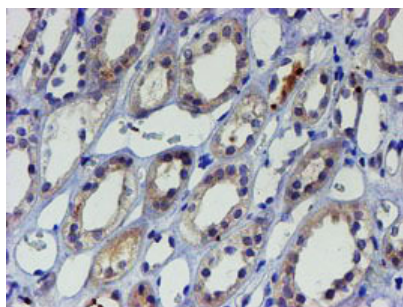
Immunohistochemical staining of paraffin-embedded Adenocarcinoma of Human endometrium tissue using anti-LHX1 mouse monoclonal antibody. (Heat-induced epitope retrieval by 10mM citric buffer)



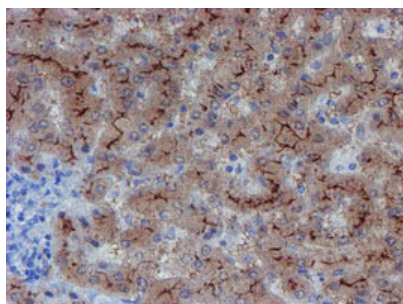
Immunohistochemical staining of paraffin-embedded Human prostate tissue within the normal limits using anti-LHX1 mouse monoclonal antibody. (Heat-induced epitope retrieval by 10mM citric buffer)



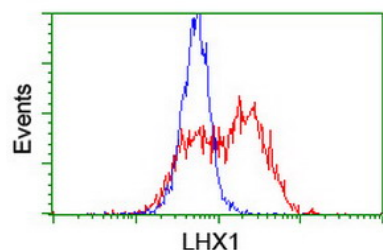
Immunohistochemical staining of paraffin-embedded Carcinoma of Human prostate tissue using anti-LHX1 mouse monoclonal antibody. (Heat-induced epitope retrieval by 10mM citric buffer)



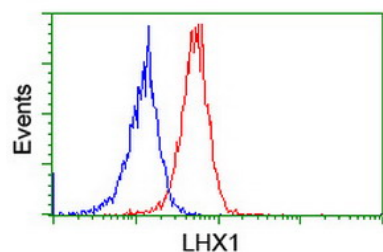
Immunohistochemical staining of paraffin-embedded Human Kidney tissue within the normal limits using anti-LHX1 mouse monoclonal antibody. (Heat-induced epitope retrieval by 10mM citric buffer)



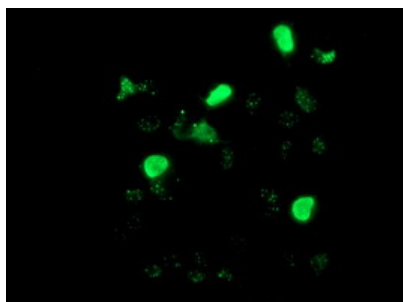
Immunohistochemical staining of paraffin-embedded Human liver tissue within the normal limits using anti-LHX1 mouse monoclonal antibody. (Heat-induced epitope retrieval by 10mM citric buffer)



HEK293T cells transfected with either LHX1 (Myc-DDK-tagged) overexpress plasmid (Red) or empty vector control plasmid (Blue) were immunostained by anti-LHX1 antibody (M05816)



Flow cytometric Analysis of Jurkat cells



Anti-LHX1 mouse monoclonal antibody (M05816) immunofluorescent staining of COS7 cells transiently transfected by pCMV6-ENTRY LHX1.

**Submit a product review to Biocompare.com**

Submit a review of this product to Biocompare.com to receive a \$20 Amazon.com giftcard! Your reviews help your fellow scientists make the right decisions. Thank you for your contribution.



**Anti-LIM1 (LHX1) Mouse Monoclonal Antibody [Clone ID: OTI2D5]**