

Anti-ZHX2 Mouse Monoclonal Antibody [Clone ID: OTI2E11]

Catalog Number: M05837

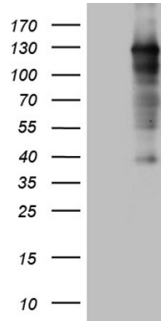
Overview

Product Name	Anti-ZHX2 Mouse Monoclonal Antibody [Clone ID: OTI2E11]
Reactive Species	Human, Mouse, Rat
Description	Boster Bio ZHX2 mouse monoclonal antibody, clone OTI2E11. Catalog# M05837. Tested in IHC, WB. This antibody reacts with Human, Mouse, Rat.
Application	IHC, WB
Clonality	Monoclonal OTI2E11
Formulation	PBS (pH 7.3) containing 1% stabilizing protein, 50% glycerol and 0.02% sodium azide. This antibody is supplied in a stabilized formulation. Compatibility with conjugation reactions depends on the chemistry of the conjugation method used. For conjugation methods that are not compatible with the stabilizing components present in this formulation, a carrier-free antibody format is required.
Storage Instructions	Store at -20°C as received.
Host	Mouse
Uniprot ID	Q9Y6X8

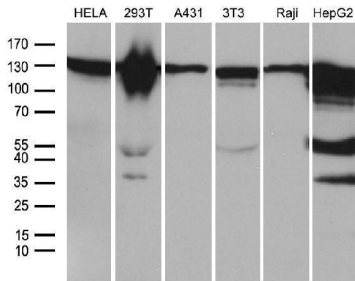
Technical Details

Immunogen	Human recombinant protein fragment corresponding to amino acids 595-837 of human ZHX2 (NP_055758) produced in E.coli.
Isotype	IgG2b
Concentration	1 mg/ml
Purification	Purified from mouse ascites fluids or tissue culture supernatant by affinity chromatography (protein A/G)
Suggested Dilutions	WB: 1:500~2000 IHC: 1:150

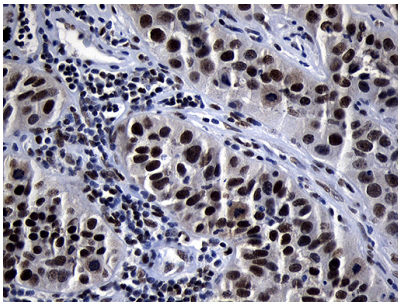
Anti-ZHX2 Mouse Monoclonal Antibody [Clone ID: OTI2E11] (M05837) Images



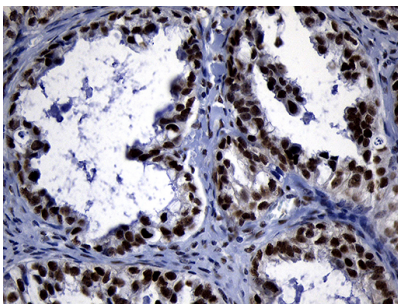
HEK293T cells were transfected with the pCMV6-ENTRY control (Left lane) or pCMV6-ENTRY ZHX2 (Right lane) cDNA for 48 hrs and lysed. Equivalent amounts of cell lysates (5 ug per lane) were separated by SDS-PAGE and immunoblotted with anti-ZHX2 (1:2000).



Western blot analysis of extracts (35ug) from 6 different cell lines by using anti-ZHX2 monoclonal antibody (1:500).

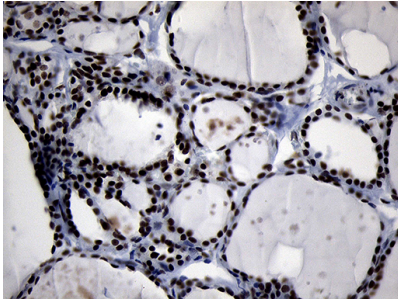
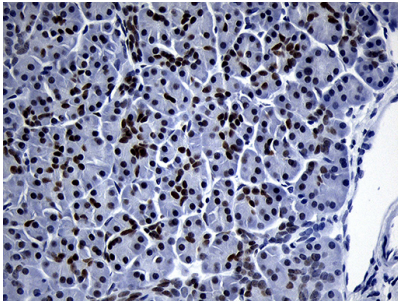


Immunohistochemical staining of paraffin-embedded Carcinoma of Human lung tissue using anti-ZHX2 mouse monoclonal antibody. (Heat-induced epitope retrieval by 1mM EDTA in 10mM Tris buffer (pH8.5) at 120°C for 3min)

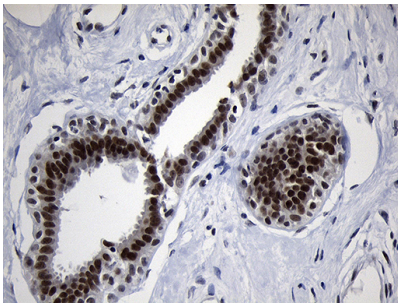


Immunohistochemical staining of paraffin-embedded Adenocarcinoma of Human ovary tissue using anti-ZHX2 mouse monoclonal antibody. (Heat-induced epitope retrieval by 1mM EDTA in 10mM Tris buffer (pH8.5) at 120°C for 3min)

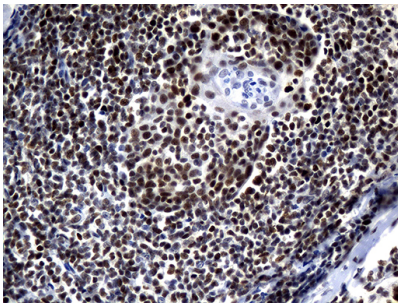
Immunohistochemical staining of paraffin-embedded Human pancreas tissue within the normal limits using anti-ZHX2 mouse monoclonal antibody. (Heat-induced epitope retrieval by 1mM EDTA in 10mM Tris buffer (pH8.5) at 120°C for 3min)



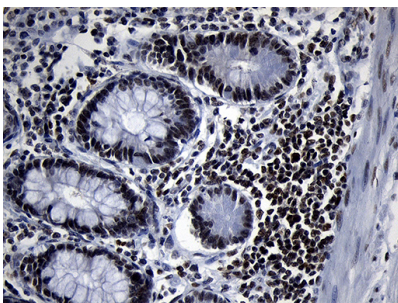
Immunohistochemical staining of paraffin-embedded Human thyroid tissue within the normal limits using anti-ZHX2 mouse monoclonal antibody. (Heat-induced epitope retrieval by 1mM EDTA in 10mM Tris buffer (pH8.5) at 120Å°C for 3min)



Immunohistochemical staining of paraffin-embedded Human breast tissue within the normal limits using anti-ZHX2 mouse monoclonal antibody. (Heat-induced epitope retrieval by 1mM EDTA in 10mM Tris buffer (pH8.5) at 120Å°C for 3min)

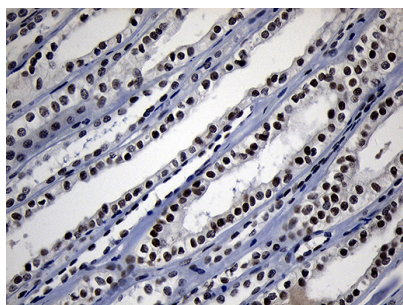


Immunohistochemical staining of paraffin-embedded Human tonsil within the normal limits using anti-ZHX2 mouse monoclonal antibody. (Heat-induced epitope retrieval by 1mM EDTA in 10mM Tris buffer (pH8.5) at 120Å°C for 3min)



Immunohistochemical staining of paraffin-embedded Human colon tissue within the normal limits using anti-ZHX2 mouse monoclonal antibody. (Heat-induced epitope retrieval by 1mM EDTA in 10mM Tris buffer (pH8.5) at 120Å°C for 3min)

Immunohistochemical staining of paraffin-embedded Human Kidney tissue within the normal limits using anti-ZHX2 mouse monoclonal antibody. (Heat-induced epitope retrieval



by 1mM EDTA in 10mM Tris buffer (pH8.5) at 120Å°C for 3min

Submit a product review to Biocompare.com

Submit a review of this product to Biocompare.com to receive a \$20 Amazon.com giftcard! Your reviews help your fellow scientists make the right decisions. Thank you for your contribution.



Anti-ZHX2 Mouse Monoclonal Antibody [Clone ID: OTI2E11]

For Research Use Only. Not for use in diagnostic procedures.