

Anti-CLIC5 Purified Monoclonal Antibody

Catalog Number: M05840

About CLIC5

CLIC5a belongs to the family of chloride intracellular channel (CLIC) proteins, all sharing a highly conserved C terminus and variable N terminus. Human CLIC5 is transcribed in two isoforms, 32 kDa CLIC5a (251 amino acids) and 49 kDa CLIC5b (410 amino acids). These proteins exist in a soluble form and their function as ion channels in vitro has not been fully confirmed in vivo. CLIC5a is a component of complexes of actin, ezrin, and several other actin-associated proteins and is important for functionality of actin-based structures.

Overview

| | |
|----------------------|---|
| Product Name | Anti-CLIC5 Purified Monoclonal Antibody |
| Reactive Species | Human |
| Description | Boster Bio Anti-CLIC5 Purified Monoclonal Antibody (Catalog# M05840). Tested in Flow Cytometry, WB application(s). This antibody reacts with Human. |
| Application | Flow Cytometry, WB |
| Clonality | Monoclonal CLIC5-02 |
| Formulation | Phosphate buffered saline (PBS), pH 7.4, 15 mM sodium azide |
| Storage Instructions | Store at 2-8°C. Do not freeze. |
| Host | Mouse |
| Uniprot ID | Q9NZA1 |

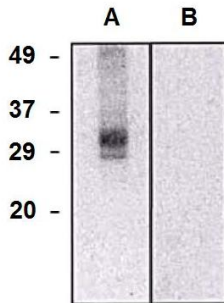
Technical Details

| | |
|----------------------------|---|
| Immunogen | KLH-conjugated peptide corresponding to the amino acids 160-173 of human CLIC5a (Cys-Ile-Asp-Ala-Asn-Thr-Ser-Asp-Lys-Gly-Ser-Arg-Arg coupled with KLH). Mouse monoclonal antibody CLIC5-02 recognizes CLIC5a, a 32 kDa intracellular protein which associates with proteins of actin complexes. |
| Predicted Reactive Species | Primate |
| Cross Reactivity | Cross-reactivity with CLIC5b was not determined. |
| Isotype | Mouse IgG2b kappa |
| Form | Liquid |
| Concentration | 1 mg/ml |
| Purification | Purified by protein-A affinity chromatography. |

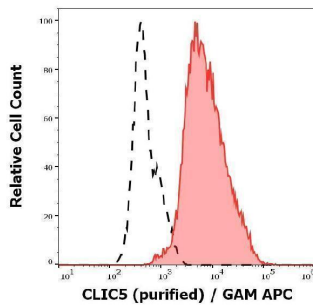
Suggested Dilutions

Flow cytometry: 1-4 ug/ml. Intracellular staining.

Anti-CLIC5 Purified Monoclonal Antibody (M05840) Images



Western blotting analysis of CLIC5a in HEK293-CLIC5a transfectants (A) and HEK293 cells (B) using mouse monoclonal antibody (clone CLIC5-02).



Separation of NALM-6 cells stained using anti-CLIC5 (CLIC5-02) purified antibody (concentration in sample 5 $\mu\text{g}/\text{ml}$, GAM APC, red-filled) from NALM-6 cells unstained by primary antibody (GAM APC, black-dashed) in flow cytometry analysis (intracellular staining).

Submit a product review to [Biocompare.com](https://www.biocompare.com)

Submit a review of this product to [Biocompare.com](https://www.biocompare.com) to receive a \$20 Amazon.com giftcard! Your reviews help your fellow scientists make the right decisions. Thank you for your contribution.



Anti-CLIC5 Purified Monoclonal Antibody

For Research Use Only. Not for use in diagnostic procedures.