

Anti-TUBB2B Mouse Monoclonal Antibody [Clone ID: OTI6D11]

Catalog Number: M05849

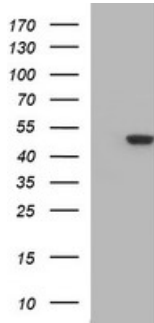
Overview

| | |
|----------------------|--|
| Product Name | Anti-TUBB2B Mouse Monoclonal Antibody [Clone ID: OTI6D11] |
| Reactive Species | Human, Mouse, Rat |
| Description | Boster Bio TUBB2B mouse monoclonal antibody, clone OTI6D11. Catalog# M05849. Tested in IF, IHC, WB. This antibody reacts with Human, Mouse, Rat. |
| Application | IF, IHC, WB |
| Clonality | Monoclonal OTI6D11 |
| Formulation | PBS (pH 7.3) containing 1% stabilizing protein, 50% glycerol and 0.02% sodium azide. This antibody is supplied in a stabilized formulation. Compatibility with conjugation reactions depends on the chemistry of the conjugation method used. For conjugation methods that are not compatible with the stabilizing components present in this formulation, a carrier-free antibody format is required. |
| Storage Instructions | Store at -20°C as received. |
| Host | Mouse |
| Uniprot ID | Q9BVA1 |

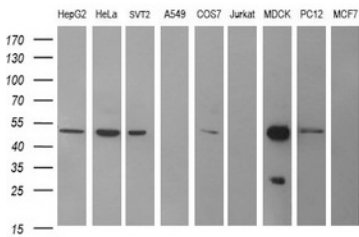
Technical Details

| | |
|---------------------|---|
| Immunogen | Full length human recombinant protein of human TUBB2B (NP_821080) produced in HEK293T cell. |
| Isotype | IgG2a |
| Concentration | 1 mg/ml |
| Purification | Purified from mouse ascites fluids or tissue culture supernatant by affinity chromatography (protein A/G) |
| Suggested Dilutions | WB 1:400-1:2000 IF 1:100 |

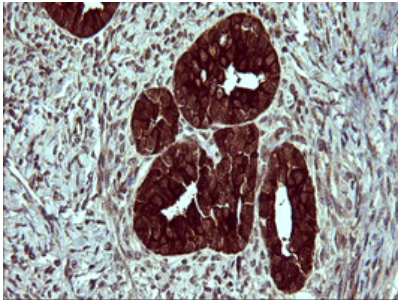
Anti-TUBB2B Mouse Monoclonal Antibody [Clone ID: OTI6D11] (M05849) Images



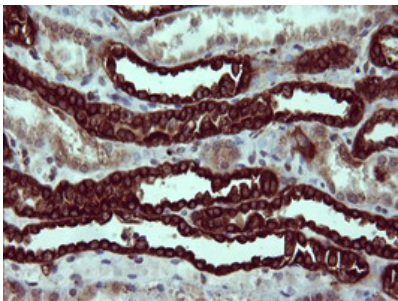
HEK293T cells were transfected with the pCMV6-ENTRY control (Left lane) or pCMV6-ENTRY TUBB2B (Right lane) cDNA for 48 hrs and lysed. Equivalent amounts of cell lysates (5 ug per lane) were separated by SDS-PAGE and immunoblotted with anti-TUBB2B.



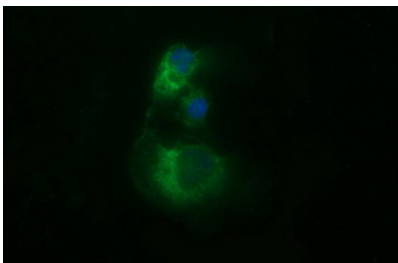
Western blot analysis of extracts (35ug) from 9 different cell lines by using anti-TUBB2B monoclonal antibody (HepG2: human; HeLa: human; SVT2: mouse; A549: human; COS7: monkey; Jurkat: human; MDCK: canine; PC12: rat; MCF7: human).



Immunohistochemical staining of paraffin-embedded Adenocarcinoma of Human ovary tissue using anti-TUBB2B mouse monoclonal antibody. (M05849)

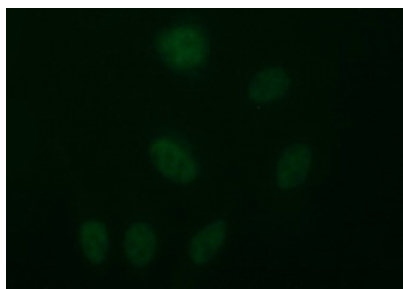


Immunohistochemical staining of paraffin-embedded Human Kidney tissue within the normal limits using anti-TUBB2B mouse monoclonal antibody. (M05849)



Anti-TUBB2B mouse monoclonal antibody (M05849) immunofluorescent staining of COS7 cells transiently transfected by pCMV6-ENTRY TUBB2B.

Immunofluorescent staining of HeLa cells using anti-TUBB2B



mouse monoclonal antibody (M05849).

Submit a product review to Biocompare.com

Submit a review of this product to Biocompare.com to receive a \$20 Amazon.com giftcard! Your reviews help your fellow scientists make the right decisions. Thank you for your contribution.



Anti-TUBB2B Mouse Monoclonal Antibody [Clone ID: OTI6D11]

For Research Use Only. Not for use in diagnostic procedures.