

Anti-H6PD Mouse Monoclonal Antibody [Clone ID: OTI2A7]

Catalog Number: M05856

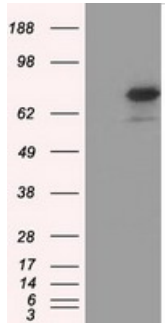
Overview

Product Name	Anti-H6PD Mouse Monoclonal Antibody [Clone ID: OTI2A7]
Reactive Species	Human, Monkey
Description	Boster Bio Anti-H6PD mouse monoclonal antibody, clone OTI2A7 (formerly 2A7). Catalog# M05856. Tested in FC, IF, IHC, WB. This antibody reacts with Human, Monkey.
Application	Flow Cytometry, IF, IHC, WB
Clonality	Monoclonal OTI2A7
Formulation	PBS (pH 7.3) containing 1% stabilizing protein, 50% glycerol and 0.02% sodium azide. This antibody is supplied in a stabilized formulation. Compatibility with conjugation reactions depends on the chemistry of the conjugation method used. For conjugation methods that are not compatible with the stabilizing components present in this formulation, a carrier-free antibody format is required.
Storage Instructions	Store at -20°C as received.
Host	Mouse
Uniprot ID	O95479

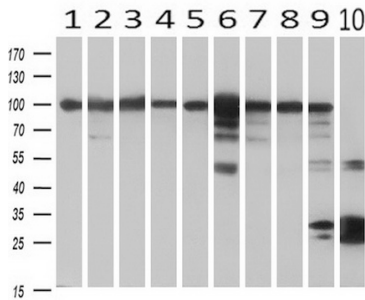
Technical Details

Immunogen	Full length human recombinant protein of human H6PD (NP_004276) produced in HEK293T cell.
Isotype	IgG1
Concentration	1 mg/ml
Purification	Purified from mouse ascites fluids or tissue culture supernatant by affinity chromatography (protein A/G)
Suggested Dilutions	WB 1:250~500 IHC 1:50 IF 1:100 Flow Cytometry 1:100

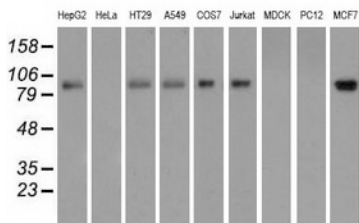
Anti-H6PD Mouse Monoclonal Antibody [Clone ID: OTI2A7] (M05856) Images



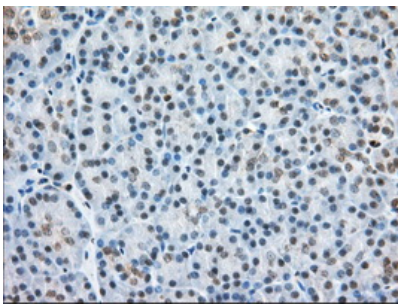
HEK293T cells were transfected with the pCMV6-ENTRY control (Left lane) or pCMV6-ENTRY H6PD (Right lane) cDNA for 48 hrs and lysed. Equivalent amounts of cell lysates (5 ug per lane) were separated by SDS-PAGE and immunoblotted with anti-H6PD.



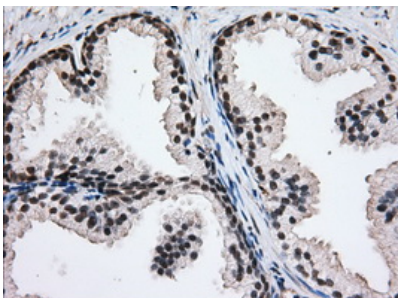
Western blot analysis of extracts (10ug) from 10 Human tissue by using anti-H6PD monoclonal antibody at 1:500 (1: Testis; 2: Omentum; 3: Uterus; 4: Breast; 5: Brain; 6: Liver; 7: Ovary; 8: Thyroid gland; 9: colon;10: spleen).



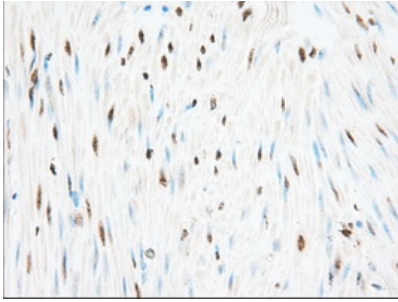
Western blot analysis of extracts (35ug) from 9 different cell lines by using anti-H6PD monoclonal antibody.



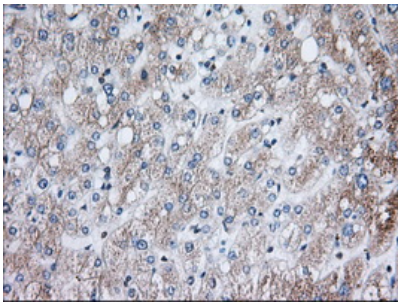
Immunohistochemical staining of paraffin-embedded Human pancreas tissue within the normal limits using anti-H6PD mouse monoclonal antibody. (Heat-induced epitope retrieval by 10mM citric buffer)



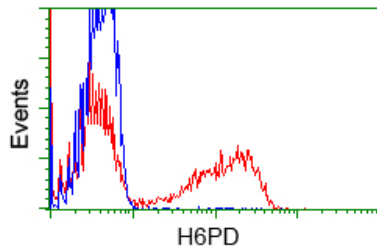
Immunohistochemical staining of paraffin-embedded Human prostate tissue within the normal limits using anti-H6PD mouse monoclonal antibody. (Heat-induced epitope retrieval by 10mM citric buffer)



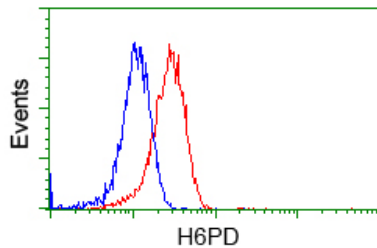
Immunohistochemical staining of paraffin-embedded Human colon tissue within the normal limits using anti-H6PD mouse monoclonal antibody. (Heat-induced epitope retrieval by 10mM citric buffer)



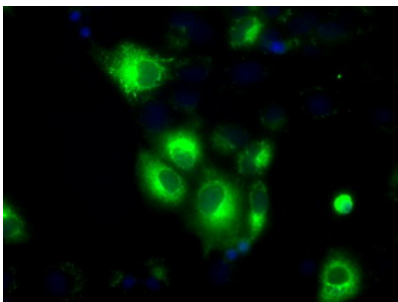
Immunohistochemical staining of paraffin-embedded Human liver tissue within the normal limits using anti-H6PD mouse monoclonal antibody. (Heat-induced epitope retrieval by 10mM citric buffer)



HEK293T cells transfected with either H6PD (Myc-DDK-tagged) overexpress plasmid (Red) or empty vector control plasmid (Blue) were immunostained by anti-H6PD antibody (M05856)



Flow cytometric Analysis of Jurkat cells



Anti-H6PD mouse monoclonal antibody (M05856) immunofluorescent staining of COS7 cells transiently transfected by pCMV6-ENTRY H6PD.

Submit a product review to [Biocompare.com](https://www.biocompare.com)

Submit a review of this product to [Biocompare.com](https://www.biocompare.com) to receive a \$20 Amazon.com giftcard! Your reviews help your fellow scientists make the right decisions. Thank you for your contribution.



Anti-H6PD Mouse Monoclonal Antibody [Clone ID: OT12A7]

For Research Use Only. Not for use in diagnostic procedures.