

## Anti-SFRS9 (SRSF9) Mouse Monoclonal Antibody [Clone ID: OTI5G7]

Catalog Number: M05860

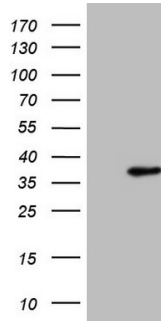
### Overview

Product Name	Anti-SFRS9 (SRSF9) Mouse Monoclonal Antibody [Clone ID: OTI5G7]
Reactive Species	Human, Mouse, Rat
Description	Boster Bio SRSF9 mouse monoclonal antibody, clone OTI5G7 (formerly 5G7). Catalog# M05860. Tested in IHC, WB. This antibody reacts with Human, Mouse, Rat.
Application	IHC, WB
Clonality	Monoclonal OTI5G7
Formulation	PBS (pH 7.3) containing 1% stabilizing protein, 50% glycerol and 0.02% sodium azide. This antibody is supplied in a stabilized formulation. Compatibility with conjugation reactions depends on the chemistry of the conjugation method used. For conjugation methods that are not compatible with the stabilizing components present in this formulation, a carrier-free antibody format is required.
Storage Instructions	Store at -20°C as received.
Host	Mouse
Uniprot ID	Q13242

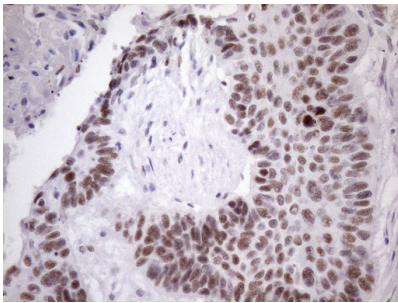
### Technical Details

Immunogen	Full length human recombinant protein of human SRSF9 (NP_003760) produced in E.coli.
Isotype	IgG2b
Concentration	1 mg/ml
Purification	Purified from mouse ascites fluids or tissue culture supernatant by affinity chromatography (protein A/G)
Suggested Dilutions	WB 1:2000 IHC 1:150

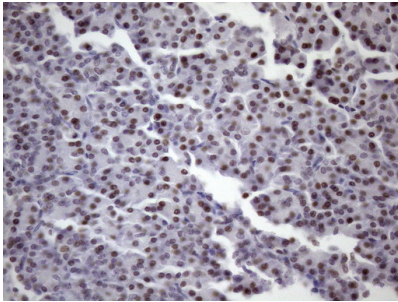
## Anti-SFRS9 (SRSF9) Mouse Monoclonal Antibody [Clone ID: OTI5G7] (M05860) Images



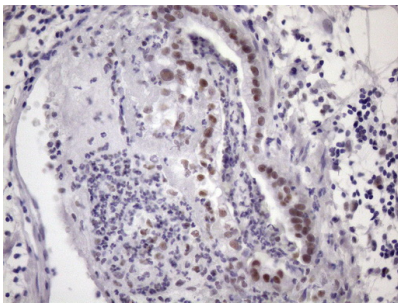
HEK293T cells were transfected with the pCMV6-ENTRY control (Left lane) or pCMV6-ENTRY SRSF9 (Right lane) cDNA for 48 hrs and lysed. Equivalent amounts of cell lysates (5 ug per lane) were separated by SDS-PAGE and immunoblotted with anti-SRSF9 (1:2000).



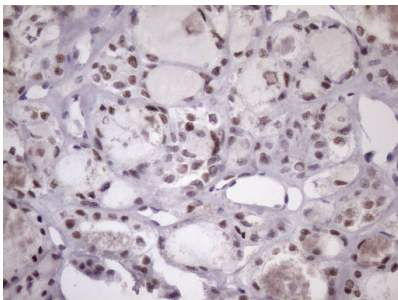
Immunohistochemical staining of paraffin-embedded Carcinoma of Human lung tissue using anti-SRSF9 mouse monoclonal antibody. (Heat-induced epitope retrieval by Tris-EDTA)



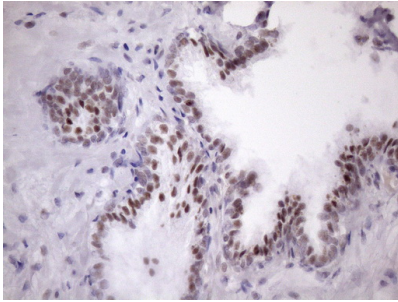
Immunohistochemical staining of paraffin-embedded Human pancreas tissue within the normal limits using anti-SRSF9 mouse monoclonal antibody. (Heat-induced epitope retrieval by Tris-EDTA)



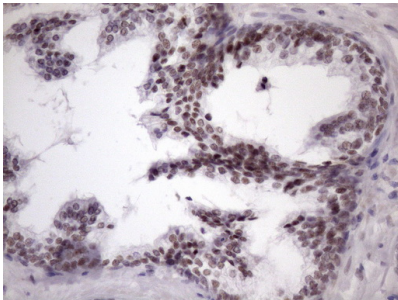
Immunohistochemical staining of paraffin-embedded Carcinoma of Human pancreas tissue using anti-SRSF9 mouse monoclonal antibody. (Heat-induced epitope retrieval by Tris-EDTA)



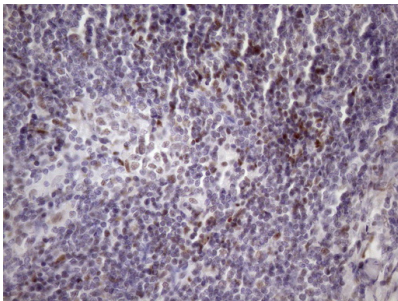
Immunohistochemical staining of paraffin-embedded Carcinoma of Human thyroid tissue using anti-SRSF9 mouse monoclonal antibody. (Heat-induced epitope retrieval by Tris-EDTA)



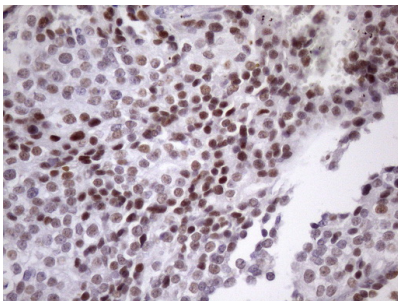
Immunohistochemical staining of paraffin-embedded Human prostate tissue within the normal limits using anti-SRSF9 mouse monoclonal antibody. (Heat-induced epitope retrieval by Tris-EDTA)



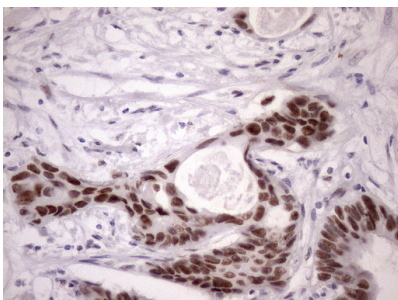
Immunohistochemical staining of paraffin-embedded Carcinoma of Human prostate tissue using anti-SRSF9 mouse monoclonal antibody. (Heat-induced epitope retrieval by Tris-EDTA)



Immunohistochemical staining of paraffin-embedded Human lymph node tissue within the normal limits using anti-SRSF9 mouse monoclonal antibody. (Heat-induced epitope retrieval by Tris-EDTA)

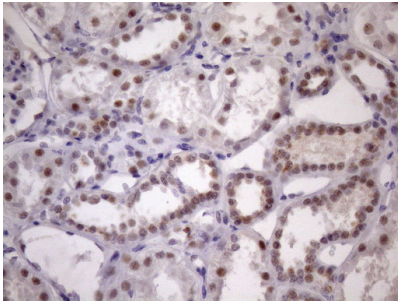


Immunohistochemical staining of paraffin-embedded Adenocarcinoma of Human breast tissue using anti-SRSF9 mouse monoclonal antibody. (Heat-induced epitope retrieval by Tris-EDTA)

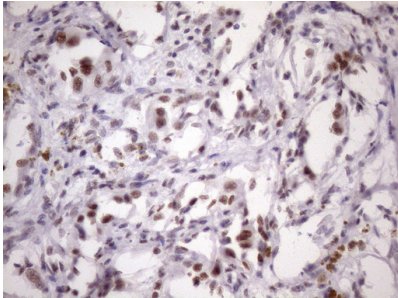


Immunohistochemical staining of paraffin-embedded Adenocarcinoma of Human colon tissue using anti-SRSF9 mouse monoclonal antibody. (Heat-induced epitope retrieval by Tris-EDTA)

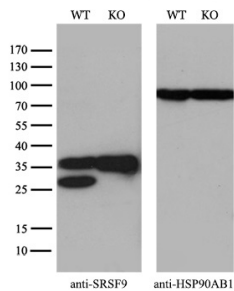
Immunohistochemical staining of paraffin-embedded Human Kidney tissue within the normal limits using anti-SRSF9



mouse monoclonal antibody. (Heat-induced epitope retrieval by Tris-EDTA)



Immunohistochemical staining of paraffin-embedded Carcinoma of Human kidney tissue using anti-SRSF9 mouse monoclonal antibody. (Heat-induced epitope retrieval by Tris-EDTA)



Equivalent amounts of cell lysates (10 ug per lane) of wild-type 293T cells (WT) and SRSF9-Knockout 293T cells (KO) were separated by SDS-PAGE and immunoblotted with anti-SRSF9 monoclonal antibody M05860

## Submit a product review to [Biocompare.com](https://www.biocompare.com)

Submit a review of this product to [Biocompare.com](https://www.biocompare.com) to receive a \$20 Amazon.com giftcard! Your reviews help your fellow scientists make the right decisions. Thank you for your contribution.



Anti-SFRS9 (SRSF9) Mouse Monoclonal Antibody [Clone ID: OT15G7]

For Research Use Only. Not for use in diagnostic procedures.