

Anti-EIF4EL3 (EIF4E2) Mouse Monoclonal Antibody [Clone ID: OTI1F11]

Catalog Number: M05869-1

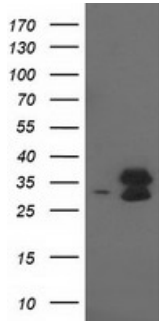
Overview

Product Name	Anti-EIF4EL3 (EIF4E2) Mouse Monoclonal Antibody [Clone ID: OTI1F11]
Reactive Species	Human, Mouse
Description	Boster Bio EIF4E2 mouse monoclonal antibody, clone OTI1F11 (formerly 1F11). Catalog# M05869-1. Tested in FC, IF, IHC, WB. This antibody reacts with Human, Mouse.
Application	Flow Cytometry, IF, IHC, WB
Clonality	Monoclonal OTI1F11
Formulation	PBS (PH 7.3) containing 1% BSA, 50% glycerol and 0.02% sodium azide.
Storage Instructions	Store at -20°C as received.
Host	Mouse
Uniprot ID	O60573

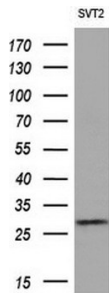
Technical Details

Immunogen	Full length human recombinant protein of human EIF4E2 (NP_004837) produced in HEK293T cell.
Isotype	IgG1
Concentration	0.54 mg/ml
Purification	Purified from mouse ascites fluids or tissue culture supernatant by affinity chromatography (protein A/G)
Suggested Dilutions	Dilute the sample so that the expected range of concentrations fall within the detection range of this kit. If the expected range of concentration is unknown, a pilot test should be conducted to decide the optimal dilution ratio for your samples. Some PubMed article(s) citing the expression level of this target are as follows:

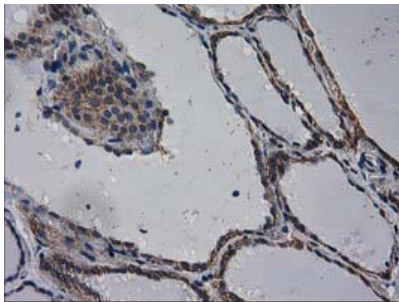
Anti-EIF4EL3 (EIF4E2) Mouse Monoclonal Antibody [Clone ID: OTI1F11] (M05869-1) Images



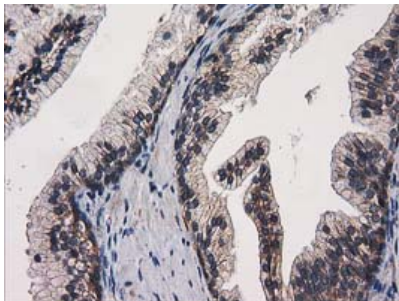
HEK293T cells were transfected with the pCMV6-ENTRY control (Left lane) or pCMV6-ENTRY EIF4E2 (Right lane) cDNA for 48 hrs and lysed. Equivalent amounts of cell lysates (5 ug per lane) were separated by SDS-PAGE and immunoblotted with anti-EIF4E2.



Western blot analysis of extracts (10ug) from 1 cell line by using anti-EIF4E2 monoclonal antibody (1:200).

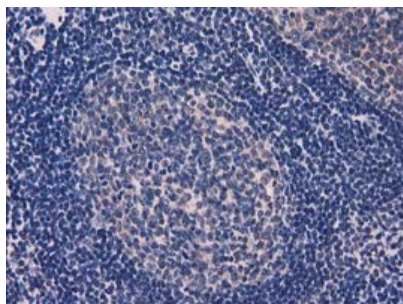
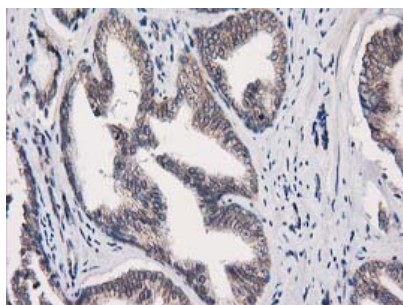


Immunohistochemical staining of paraffin-embedded Human thyroid tissue within the normal limits using anti-EIF4E2 mouse monoclonal antibody. (Heat-induced epitope retrieval by 10mM citric buffer)

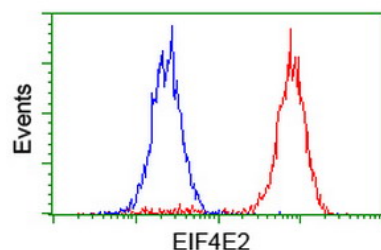


Immunohistochemical staining of paraffin-embedded Human prostate tissue within the normal limits using anti-EIF4E2 mouse monoclonal antibody. (Heat-induced epitope retrieval by 10mM citric buffer)

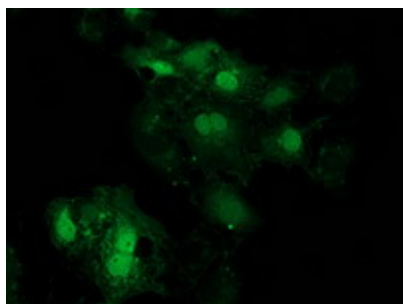
Immunohistochemical staining of paraffin-embedded Carcinoma of Human prostate tissue using anti-EIF4E2 mouse monoclonal antibody. (Heat-induced epitope retrieval by 10mM citric buffer)



Immunohistochemical staining of paraffin-embedded Human lymph node tissue within the normal limits using anti-EIF4E2 mouse monoclonal antibody. (Heat-induced epitope retrieval by 10mM citric buffer)



Flow cytometric Analysis of Hela cells



Western blot analysis of extracts (10ug) from SVT2 cell line by using anti-EIF4E2 monoclonal antibody (1:200).

Submit a product review to Biocompare.com

Submit a review of this product to Biocompare.com to receive a \$20 Amazon.com giftcard! Your reviews help your fellow scientists make the right decisions. Thank you for your contribution.



Anti-EIF4EL3 (EIF4E2) Mouse Monoclonal Antibody [Clone ID: OTI1F11]