

## Anti-LIM/homeobox protein Lhx2 LHX2 Monoclonal Antibody

Catalog Number: M05940

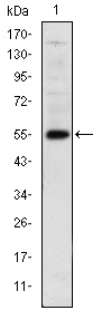
### Overview

Product Name	Anti-LIM/homeobox protein Lhx2 LHX2 Monoclonal Antibody
Reactive Species	Human
Description	Boster Bio Anti-LIM/homeobox protein Lhx2 LHX2 Monoclonal Antibody catalog # M05940. Tested in ELISA, IF, WB applications. This antibody reacts with Human.
Application	ELISA, IF, WB
Clonality	Monoclonal 6G2
Formulation	Ascitic fluid containing 0.03% sodium azide.
Storage Instructions	Store at -20°C for one year. For short term storage and frequent use, store at 4°C for up to one month. Avoid repeated freeze-thaw cycles.
Host	Mouse
Uniprot ID	P50458

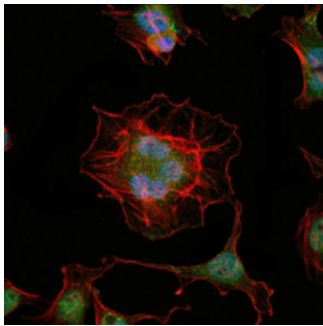
### Technical Details

Immunogen	Purified recombinant fragment of human LHX2 expressed in E. Coli.
Cross Reactivity	No cross reactivity with other proteins.
Isotype	IgG
Form	Liquid
Concentration	1 mg/ml
Purification	Affinity purification
Suggested Dilutions	WB 1:500-1:2000 IF 1:200-1:1000 ELISA 1:10000

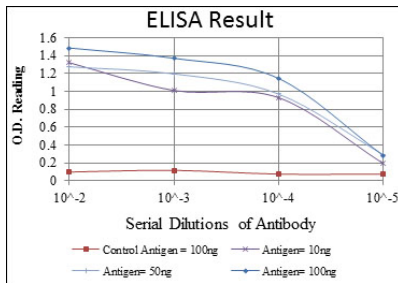
## Anti-LIM/homeobox protein Lhx2 LHX2 Monoclonal Antibody (M05940) Images



Western blotting validation for Anti-LIM/homeobox protein Lhx2 LHX2 Monoclonal Antibody M05940 Western Blot (WB) analysis using LHX2 Monoclonal Antibody against human LHX2 (AA: 200-406) recombinant protein. Electrophoresis was performed on a SDS-PAGE gel. To determine SDS-PAGE gel concentration



Immunofluorescent staining data of LHX2 using Anti-LIM/homeobox protein Lhx2 LHX2 Monoclonal Antibody (M05940). Immunofluorescence (IF) analysis of HeLa cells using LHX2 Monoclonal Antibody (green). Blue: DRAQ5 fluorescent DNA dye. Red: Actin filaments have been labeled with Alexa Fluor-555 phalloidin.



ELISA validation of LHX2 using Anti-LIM/homeobox protein Lhx2 LHX2 Monoclonal Antibody (M05940). ELISA analysis of LHX2 antibody.

### Submit a product review to Biocompare.com

Submit a review of this product to Biocompare.com to receive a \$20 Amazon.com giftcard! Your reviews help your fellow scientists make the right decisions. Thank you for your contribution.



Anti-LIM/homeobox protein Lhx2 LHX2 Monoclonal Antibody

For Research Use Only. Not for use in diagnostic procedures.