

Anti-SH3 containing Grb 2 like 1 protein (SH3GL1) Mouse Monoclonal Antibody [Clone ID: OTI2F5]

Catalog Number: M05946

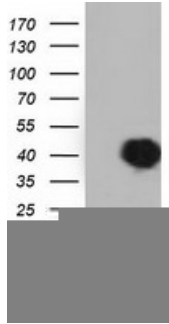
Overview

Product Name	Anti-SH3 containing Grb 2 like 1 protein (SH3GL1) Mouse Monoclonal Antibody [Clone ID: OTI2F5]
Reactive Species	Human, Mouse, Rat
Description	Boster Bio SH3GL1 mouse monoclonal antibody, clone OTI2F5 (formerly 2F5). Catalog# M05946. Tested in FC, IF, IHC, WB. This antibody reacts with Human, Mouse, Rat.
Application	Flow Cytometry, IF, IHC, WB
Clonality	Monoclonal OTI2F5
Formulation	PBS (pH 7.3) containing 1% stabilizing protein, 50% glycerol and 0.02% sodium azide. This antibody is supplied in a stabilized formulation. Compatibility with conjugation reactions depends on the chemistry of the conjugation method used. For conjugation methods that are not compatible with the stabilizing components present in this formulation, a carrier-free antibody format is required.
Storage Instructions	Store at -20°C as received.
Host	Mouse
Uniprot ID	Q99961

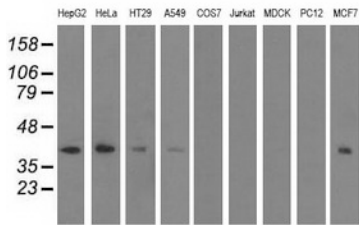
Technical Details

Immunogen	Full length human recombinant protein of human SH3GL1 (NP_003016) produced in HEK293T cell.
Isotype	IgG1
Concentration	0.64 mg/ml
Purification	Purified from mouse ascites fluids or tissue culture supernatant by affinity chromatography (protein A/G)
Suggested Dilutions	WB 1:2000 IHC 1:150 IF 1:100 Flow Cytometry 1:100

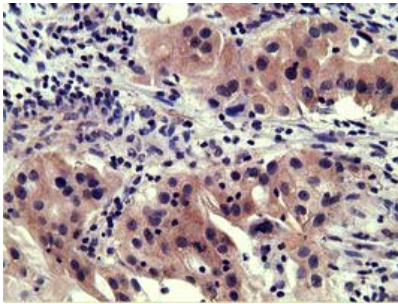
Anti-SH3 containing Grb 2 like 1 protein (SH3GL1) Mouse Monoclonal Antibody [Clone ID: OTI2F5] (M05946) Images



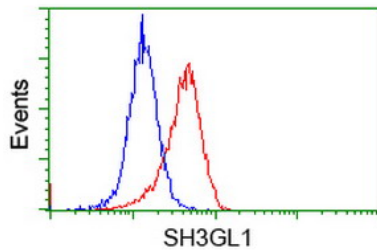
HEK293T cells were transfected with the pCMV6-ENTRY control (Left lane) or pCMV6-ENTRY SH3GL1 (Right lane) cDNA for 48 hrs and lysed. Equivalent amounts of cell lysates (5 ug per lane) were separated by SDS-PAGE and immunoblotted with anti-SH3GL1.



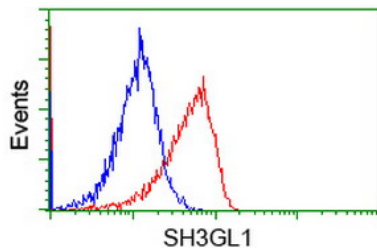
Western blot analysis of extracts (35ug) from 9 different cell lines by using anti-SH3GL1 monoclonal antibody.



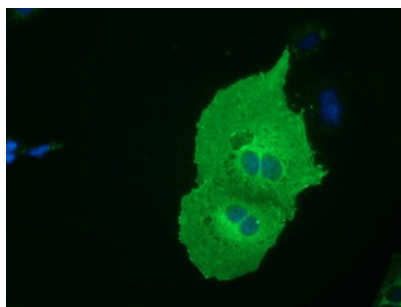
Immunohistochemical staining of paraffin-embedded Carcinoma of Human bladder tissue using anti-SH3GL1 mouse monoclonal antibody. (Heat-induced epitope retrieval by 10mM citric buffer)



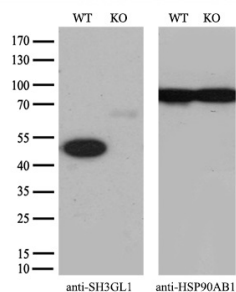
Flow cytometric Analysis of HeLa cells



Flow cytometric Analysis of Jurkat cells



Anti-SH3GL1 mouse monoclonal antibody (M05946) immunofluorescent staining of COS7 cells transiently transfected by pCMV6-ENTRY SH3GL1.



Equivalent amounts of cell lysates (10 ug per lane) of wild-type 293T cells (WT) and SH3GL1-Knockout 293T cells (KO) were separated by SDS-PAGE and immunoblotted with anti-SH3GL1 monoclonal antibody M05946

Submit a product review to Biocompare.com

Submit a review of this product to Biocompare.com to receive a \$20 Amazon.com giftcard! Your reviews help your fellow scientists make the right decisions. Thank you for your contribution.



Anti-SH3 containing Grb 2 like 1 protein (SH3GL1) Mouse Monoclonal Antibody [Clone ID: OT12F5]

For Research Use Only. Not for use in diagnostic procedures.