

## Anti-Carboxypeptidase A (CPA1) Mouse Monoclonal Antibody [Clone ID: OTI2A3]

Catalog Number: M05985

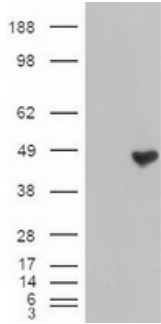
### Overview

Product Name	Anti-Carboxypeptidase A (CPA1) Mouse Monoclonal Antibody [Clone ID: OTI2A3]
Reactive Species	Human
Description	Boster Bio Anti-CPA-1 (Carboxypeptidase A1) mouse monoclonal antibody, clone OTI2A3 (formerly 2A3). Catalog# M05985. Tested in IF, IHC, WB. This antibody reacts with Human.
Application	IF, IHC, WB
Clonality	Monoclonal OTI2A3
Formulation	PBS (pH 7.3) containing 1% stabilizing protein, 50% glycerol and 0.02% sodium azide. This antibody is supplied in a stabilized formulation. Compatibility with conjugation reactions depends on the chemistry of the conjugation method used. For conjugation methods that are not compatible with the stabilizing components present in this formulation, a carrier-free antibody format is required.
Storage Instructions	Store at -20°C as received.
Host	Mouse
Uniprot ID	P15085

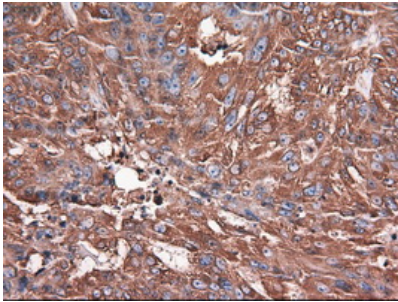
### Technical Details

Immunogen	Recombinant protein expressed in E.coli corresponding to amino acids 1-419 of human CPA-1
Isotype	IgG2a
Concentration	1 mg/ml
Purification	Purified from mouse ascites fluids or tissue culture supernatant by affinity chromatography (protein A/G)
Suggested Dilutions	WB: 1:1000 IHC 1:50 IF 1:100

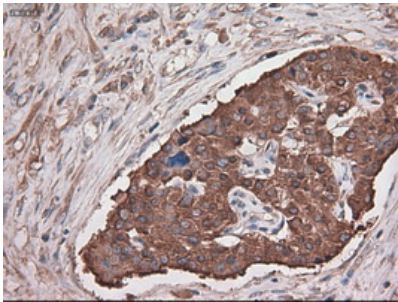
## Anti-Carboxypeptidase A (CPA1) Mouse Monoclonal Antibody [Clone ID: OTI2A3] (M05985) Images



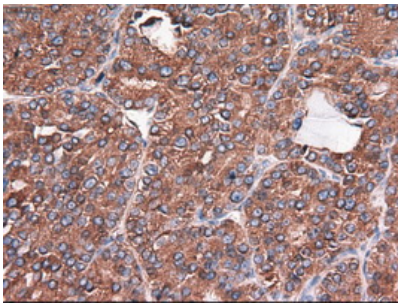
HEK293T cells were transfected with the pCMV6-ENTRY control (Left lane) or pCMV6-ENTRY CPA1 (Right lane) cDNA for 48 hrs and lysed. Equivalent amounts of cell lysates (5 ug per lane) were separated by SDS-PAGE and immunoblotted with anti-CPA1.



Immunohistochemical staining of paraffin-embedded Adenocarcinoma of ovary using anti-CPA1 (M05985) mouse monoclonal antibody (Heat-induced epitope retrieval by 10mM citric buffer)

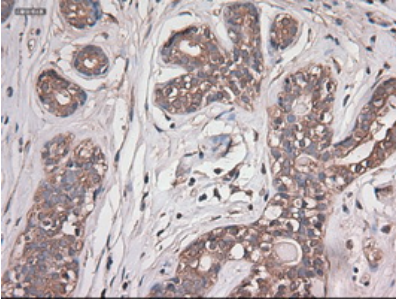
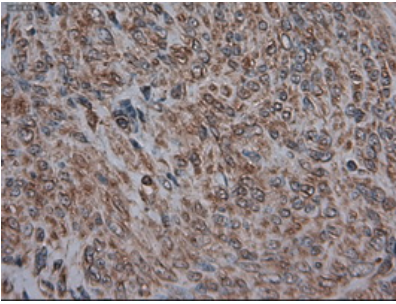


Immunohistochemical staining of paraffin-embedded Carcinoma of pancreas using anti-CPA1 (M05985) mouse monoclonal antibody (Heat-induced epitope retrieval by 10mM citric buffer)

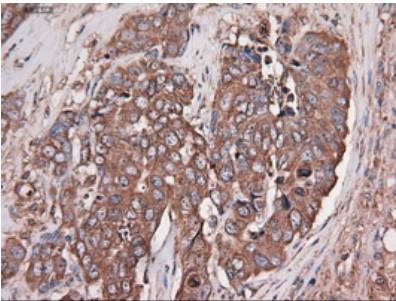


Immunohistochemical staining of paraffin-embedded Carcinoma of thyroid using anti-CPA1 (M05985) mouse monoclonal antibody (Heat-induced epitope retrieval by 10mM citric buffer)

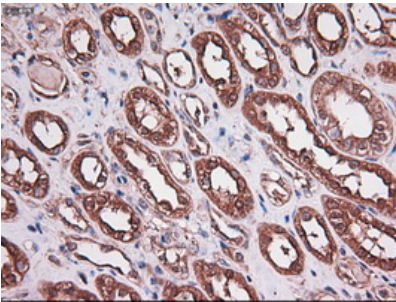
Immunohistochemical staining of paraffin-embedded endometrium within the normal limits using anti-CPA1 (M05985) mouse monoclonal antibody (Heat-induced epitope retrieval by 10mM citric buffer)



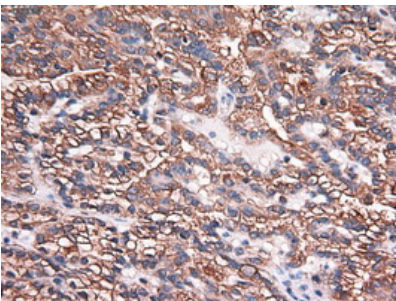
Immunohistochemical staining of paraffin-embedded breast within the normal limits using anti-CPA1 (M05985) mouse monoclonal antibody (Heat-induced epitope retrieval by 10mM citric buffer)



Immunohistochemical staining of paraffin-embedded Adenocarcinoma of breast using anti-CPA1 (M05985) mouse monoclonal antibody (Heat-induced epitope retrieval by 10mM citric buffer)

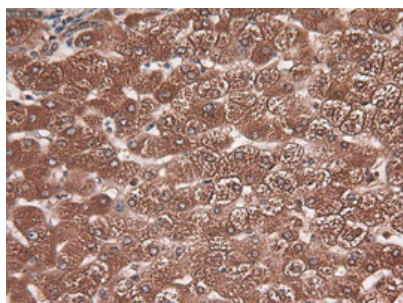


Immunohistochemical staining of paraffin-embedded kidney within the normal limits using anti-CPA1 (M05985) mouse monoclonal antibody (Heat-induced epitope retrieval by 10mM citric buffer)

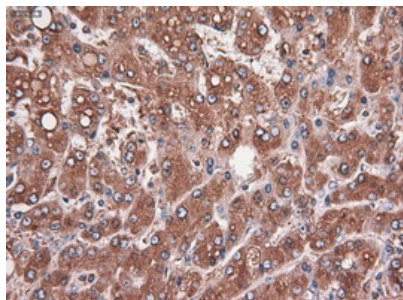


Immunohistochemical staining of paraffin-embedded Carcinoma of kidney using anti-CPA1 (M05985) mouse monoclonal antibody (Heat-induced epitope retrieval by 10mM citric buffer)

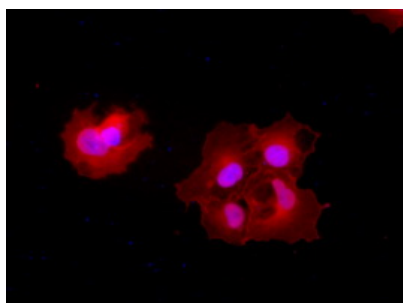
Immunohistochemical staining of paraffin-embedded liver within the normal limits using anti-CPA1 (M05985) mouse monoclonal antibody (Heat-induced epitope retrieval by



10mM citric buffer



Immunohistochemical staining of paraffin-embedded Carcinoma of liver using anti-CPA1 (M05985) mouse monoclonal antibody (Heat-induced epitope retrieval by 10mM citric buffer)



Anti-CPA1 mouse monoclonal antibody (M05985) immunofluorescent staining (Red) of COS7 cells transiently transfected by pCMV6-ENTRY CPA1.

## Submit a product review to Biocompare.com

Submit a review of this product to Biocompare.com to receive a \$20 Amazon.com giftcard! Your reviews help your fellow scientists make the right decisions. Thank you for your contribution.



Anti-Carboxypeptidase A (CPA1) Mouse Monoclonal Antibody [Clone ID: OTI2A3]

For Research Use Only. Not for use in diagnostic procedures.