

Anti-DIXDC1 Mouse Monoclonal Antibody [Clone ID: OTI6B6]

Catalog Number: M05992

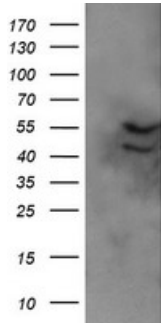
Overview

Product Name	Anti-DIXDC1 Mouse Monoclonal Antibody [Clone ID: OTI6B6]
Reactive Species	Human, Monkey, Mouse, Rat
Description	Boster Bio DIXDC1 mouse monoclonal antibody, clone OTI6B6. Catalog# M05992. Tested in IF, IHC, WB. This antibody reacts with Human, Monkey, Mouse, Rat.
Application	IF, IHC, WB
Clonality	Monoclonal OTI6B6
Formulation	PBS (pH 7.3) containing 1% stabilizing protein, 50% glycerol and 0.02% sodium azide. This antibody is supplied in a stabilized formulation. Compatibility with conjugation reactions depends on the chemistry of the conjugation method used. For conjugation methods that are not compatible with the stabilizing components present in this formulation, a carrier-free antibody format is required.
Storage Instructions	Store at -20°C as received.
Host	Mouse
Uniprot ID	Q155Q3

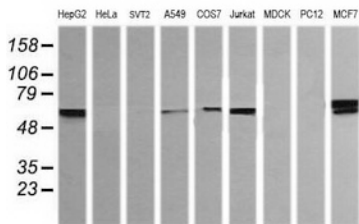
Technical Details

Immunogen	Full length human recombinant protein of human DIXDC1 (NP_219493) produced in HEK293T cell.
Isotype	IgG1
Concentration	1 mg/ml
Purification	Purified from mouse ascites fluids or tissue culture supernatant by affinity chromatography (protein A/G)
Suggested Dilutions	WB 1:200~2000 IHC 1:150 IF 1:100

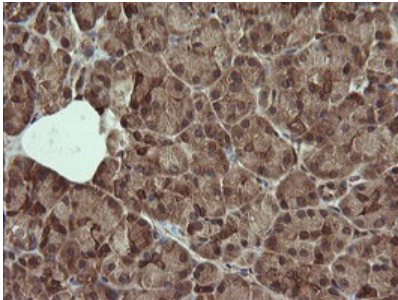
Anti-DIXDC1 Mouse Monoclonal Antibody [Clone ID: OTI6B6] (M05992) Images



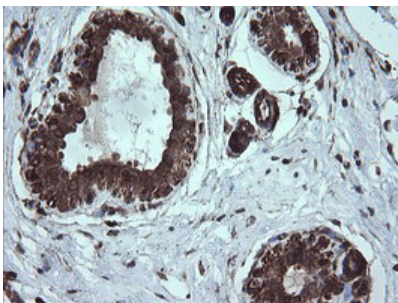
HEK293T cells were transfected with the pCMV6-ENTRY control (Left lane) or pCMV6-ENTRY DIXDC1 (Right lane) cDNA for 48 hrs and lysed. Equivalent amounts of cell lysates (5 ug per lane) were separated by SDS-PAGE and immunoblotted with anti-DIXDC1.



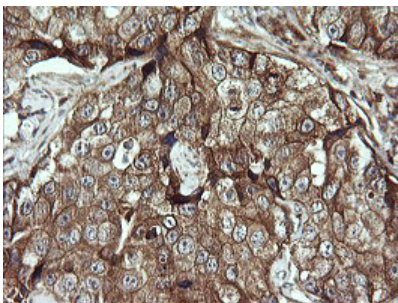
Western blot analysis of extracts (35ug) from 9 different cell lines by using anti-DIXDC1 monoclonal antibody (HepG2: human; HeLa: human; SVT2: mouse; A549: human; COS7: monkey; Jurkat: human; MDCK: canine; PC12: rat; MCF7: human).



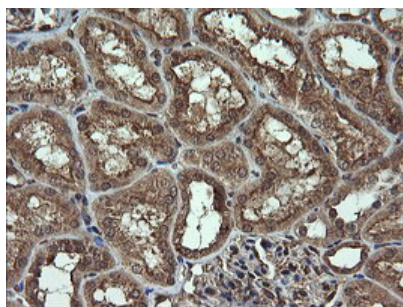
Immunohistochemical staining of paraffin-embedded Carcinoma of Human thyroid tissue using anti-DIXDC1 mouse monoclonal antibody. (Heat-induced epitope retrieval by 10mM citric buffer)



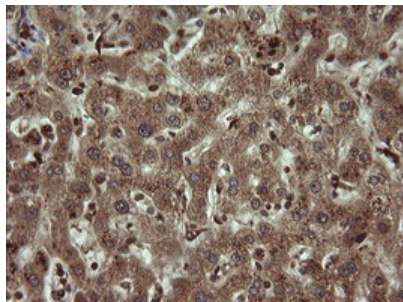
Immunohistochemical staining of paraffin-embedded Human breast tissue within the normal limits using anti-DIXDC1 mouse monoclonal antibody. (Heat-induced epitope retrieval by 10mM citric buffer)



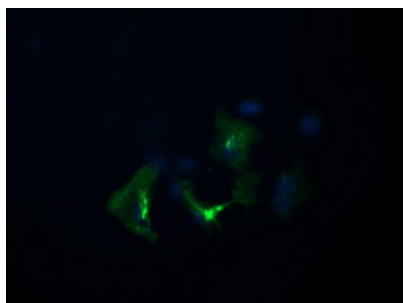
Immunohistochemical staining of paraffin-embedded Adenocarcinoma of Human breast tissue using anti-DIXDC1 mouse monoclonal antibody. (Heat-induced epitope retrieval by 10mM citric buffer)



Immunohistochemical staining of paraffin-embedded Human Kidney tissue within the normal limits using anti-DIXDC1 mouse monoclonal antibody. (Heat-induced epitope retrieval by 10mM citric buffer)



Immunohistochemical staining of paraffin-embedded Human liver tissue within the normal limits using anti-DIXDC1 mouse monoclonal antibody. (Heat-induced epitope retrieval by 10mM citric buffer)



Anti-DIXDC1 mouse monoclonal antibody (M05992) immunofluorescent staining of COS7 cells transiently transfected by pCMV6-ENTRY DIXDC1.

Submit a product review to [Biocompare.com](https://www.biocompare.com)

Submit a review of this product to [Biocompare.com](https://www.biocompare.com) to receive a \$20 Amazon.com giftcard! Your reviews help your fellow scientists make the right decisions. Thank you for your contribution.



Anti-DIXDC1 Mouse Monoclonal Antibody [Clone ID: OT16B6]

For Research Use Only. Not for use in diagnostic procedures.