

Anti-Kv beta 1 (KCNAB1) Mouse Monoclonal Antibody [Clone ID: OTI7F12]

Catalog Number: M06063

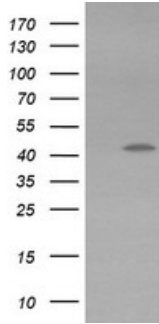
Overview

Product Name	Anti-Kv beta 1 (KCNAB1) Mouse Monoclonal Antibody [Clone ID: OTI7F12]
Reactive Species	Human, Mouse, Rat
Description	Boster Bio KCNAB1 (Kv beta 1) mouse monoclonal antibody, clone OTI7F12 (formerly 7F12). Catalog# M06063. Tested in FC, IF, IHC, WB. This antibody reacts with Human, Mouse, Rat.
Application	Flow Cytometry, IF, IHC, WB
Clonality	Monoclonal OTI7F12
Formulation	PBS (pH 7.3) containing 1% stabilizing protein, 50% glycerol and 0.02% sodium azide. This antibody is supplied in a stabilized formulation. Compatibility with conjugation reactions depends on the chemistry of the conjugation method used. For conjugation methods that are not compatible with the stabilizing components present in this formulation, a carrier-free antibody format is required.
Storage Instructions	Store at -20°C as received.
Host	Mouse
Uniprot ID	Q14722

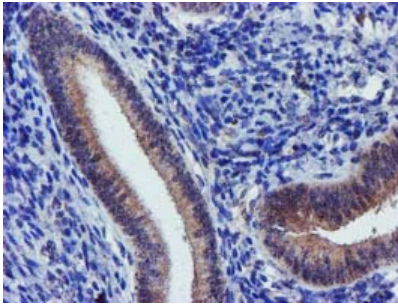
Technical Details

Immunogen	Full length human recombinant protein of human KCNAB1 (NP_751891) produced in HEK293T cell.
Isotype	IgG1
Concentration	1 mg/ml
Purification	Purified from mouse ascites fluids or tissue culture supernatant by affinity chromatography (protein A/G)
Suggested Dilutions	WB 1:1000 IHC 1:150 IF 1:100 Flow Cytometry 1:100

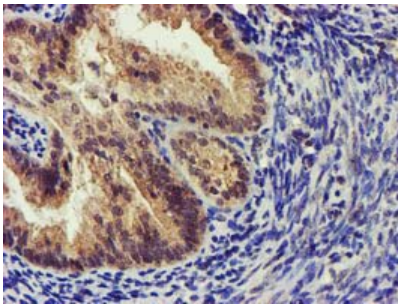
Anti-Kv beta 1 (KCNAB1) Mouse Monoclonal Antibody [Clone ID: OTI7F12] (M06063) Images



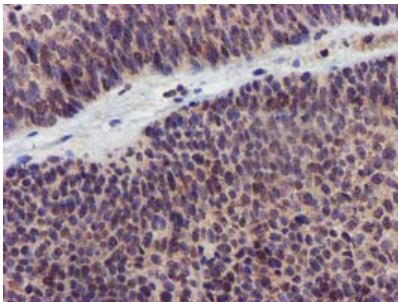
HEK293T cells were transfected with the pCMV6-ENTRY control (Left lane) or pCMV6-ENTRY KCNAB1 (Right lane) cDNA for 48 hrs and lysed. Equivalent amounts of cell lysates (5 ug per lane) were separated by SDS-PAGE and immunoblotted with anti-KCNAB1.



Immunohistochemical staining of paraffin-embedded Human endometrium tissue within the normal limits using anti-KCNAB1 mouse monoclonal antibody. (Heat-induced epitope retrieval by 10mM citric buffer)

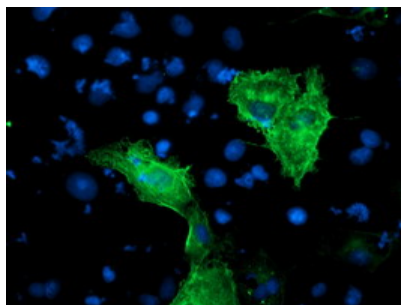
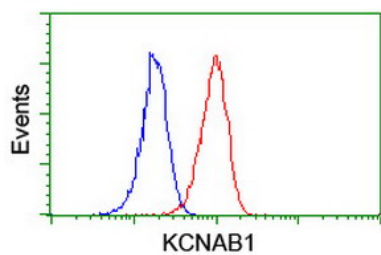


Immunohistochemical staining of paraffin-embedded Adenocarcinoma of Human endometrium tissue using anti-KCNAB1 mouse monoclonal antibody. (Heat-induced epitope retrieval by 10mM citric buffer)



Immunohistochemical staining of paraffin-embedded Carcinoma of Human bladder tissue using anti-KCNAB1 mouse monoclonal antibody. (Heat-induced epitope retrieval by 10mM citric buffer)

Flow cytometric Analysis of Jurkat cells



Anti-KCNAB1 mouse monoclonal antibody (M06063) immunofluorescent staining of COS7 cells transiently transfected by pCMV6-ENTRY KCNAB1.

Submit a product review to Biocompare.com

Submit a review of this product to Biocompare.com to receive a \$20 Amazon.com giftcard! Your reviews help your fellow scientists make the right decisions. Thank you for your contribution.



Anti-Kv beta 1 (KCNAB1) Mouse Monoclonal Antibody [Clone ID: OTI7F12]

For Research Use Only. Not for use in diagnostic procedures.