

## Anti-Esrp-1/2 Monoclonal Antibody

Catalog Number: M06068

### About ESRP1/ESRP2

Epithelial splicing regulatory protein-1 (Esrp-1) and Esrp-2 are mRNA splicing factors that regulate the formation of epithelial cell-specific isoforms. They specifically regulate the expression of FGFR2-IIIb, an epithelial cell-specific isoform of FGFR2, and also regulates the splicing of CD44, CTNND1, ENAH, 3 transcripts that undergo changes in splicing during the epithelial-to-mesenchymal transition (EMT). Esrp-1 and -2 act by directly binding specific sequences in mRNAs. They bind the GU-rich sequence motifs in the ISE/ISS-3, a cis-element regulatory region present in the mRNA of FGFR2.

### Overview

Product Name	Anti-Esrp-1/2 Monoclonal Antibody
Reactive Species	Mouse
Description	Boster Bio Anti-Esrp-1/2 Monoclonal Antibody (Catalog # M06068). Tested in WB applications. This antibody reacts with Mouse.
Application	ELISA, WB
Clonality	Monoclonal Clone: 23A7.C9 IgG1
Formulation	0.02 M Potassium Phosphate, 0.15 M Sodium Chloride, pH 7.2, 0.01% (w/v) Sodium Azide
Storage Instructions	Store vial at -20°C prior to opening. Aliquot contents and freeze at -20°C or below for extended storage. Avoid cycles of freezing and thawing. Centrifuge product if not completely clear after standing at room temperature. This product is stable for several weeks at 4°C as an undiluted liquid. Dilute only prior to immediate use. Expiration date is one (1) year from date of opening. (Ship on dry ice.)
Host	Mouse
Uniprot ID	Q8K0G8

### Technical Details

Immunogen	Anti-Esrp-1/2 was produced by repeated immunizations of full length recombinant mouse Esrp-1 fusion protein.
Predicted Reactive Species	Chimpanzee, Macaque
Isotype	IgG1
Form	Liquid (sterile filtered)
Concentration	1.0 mg/mL by UV absorbance at 280 nm
Purification	This antibody was purified from tissue culture supernatant by Protein-A chromatography followed

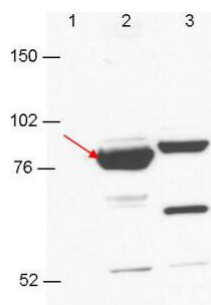
by extensive dialysis against the buffer stated above. This antibody reacts with both mouse Esrp-1 and Esrp-2 proteins. A BLAST analysis of the immunizing protein sequence shows 100% homology with Esrp-1 from mouse and a 91% sequence homology with Esrp-1 from human, pig, rat, opossum, horse, cattle, panda, dog, and chimpanzee. The binding epitope of this monoclonal antibody has not been mapped.

**Suggested Dilutions**

ELISA: 1:750,000  
WB: 1:1000

This protein-A purified antibody has been tested for use western blotting. Specific conditions for reactivity should be optimized by the end user. Expect a band approximately 75.5 kDa in size corresponding to Esrp-1 and 77.4 kDa in size corresponding to Esrp-2 by western blotting in the appropriate cell lysate or extract.

## Anti-Esrp-1/2 Monoclonal Antibody (M06068) Images



Anti-Esrp-1/2 antibody by western blot shows detection in 293T cell extracts. Lane 1: GFP-transfected. Lane 2: Esrp-1 transfected (arrow). Lane 3: Esrp-2 transfected. Each lane contains approximately 5  $\mu$ g of lysate. Primary antibody was used at a 1:1000 dilution in PBS-T plus milk, and reacted for 1hr at room temperature. The membrane was washed and reacted with a 1:10,000 dilution of an anti-mouse ECL antibody for 1hr at room temperature. Molecular weight estimation was made by comparison to prestained MW markers.

### Submit a product review to [Biocompare.com](https://www.biocompare.com)

Submit a review of this product to [Biocompare.com](https://www.biocompare.com) to receive a \$20 Amazon.com giftcard! Your reviews help your fellow scientists make the right decisions. Thank you for your contribution.



Anti-Esrp-1/2 Monoclonal Antibody

For Research Use Only. Not for use in diagnostic procedures.