

Anti-Esrp-1 Monoclonal Antibody

Catalog Number: M06068-1

About ESRP1

Epithelial splicing regulatory protein 1 (Esrp-1) is an mRNA splicing factor that regulates the formation of epithelial cell-specific isoforms. It specifically regulates the expression of FGFR2-IIIb, an epithelial cell-specific isoform of FGFR2, and also regulates the splicing of CD44, CTNND1, ENAH, 3 transcripts that undergo changes in splicing during the epithelial-to-mesenchymal transition (EMT). EsrpP-1 acts by directly binding specific sequences in mRNAs. It binds the GU-rich sequence motifs in the ISE/ISS-3, a cis-element regulatory region present in the mRNA of FGFR2.

Overview

Product Name	Anti-Esrp-1 Monoclonal Antibody
Reactive Species	Mouse
Description	Boster Bio Anti-Esrp-1 Monoclonal Antibody (Catalog # M06068-1). Tested in WB applications. This antibody reacts with Mouse.
Application	ELISA, WB
Clonality	Monoclonal Clone: 27H12.F3.H5
Formulation	0.02 M Potassium Phosphate, 0.15 M Sodium Chloride, pH 7.2, 0.01% (w/v) Sodium Azide
Storage Instructions	Store vial at -20°C prior to opening. Aliquot contents and freeze at -20°C or below for extended storage. Avoid cycles of freezing and thawing. Centrifuge product if not completely clear after standing at room temperature. This product is stable for several weeks at 4°C as an undiluted liquid. Dilute only prior to immediate use. Expiration date is one (1) year from date of opening. (Ship on dry ice.)
Host	Mouse
Uniprot ID	Q3US41

Technical Details

Immunogen	Anti-Esrp-1 was produced by repeated immunizations of full length recombinant mouse Esrp-1 fusion protein.
Predicted Reactive Species	Chimpanzee, Macaque
Isotype	IgG2b
Form	Liquid (sterile filtered)
Concentration	1.0 mg/mL by UV absorbance at 280 nm
Purification	This product is an IgG fraction antibody purified by Protein-A chromatography followed by extensive dialysis against the buffer stated above. This antibody reacts with mouse Esrp-1 protein.

A BLAST analysis of the immunizing protein sequence shows 100% homology with Esrp-1 from mouse and a 91% sequence homology with Esrp-1 from human, pig, rat, opossum, horse, cattle, panda, dog, and chimpanzee. The binding epitope of this monoclonal antibody has not been mapped.

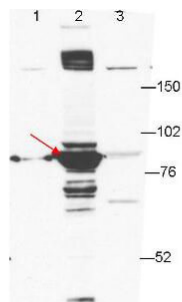
Suggested Dilutions

ELISA: 1:750,000

WB: 1:1000

This protein-A purified antibody has been tested for use western blotting. Specific conditions for reactivity should be optimized by the end user. Expect a band approximately 75.5 kDa in size corresponding to Esrp-1 by western blotting in the appropriate cell lysate or extract.

Anti-Esrp-1 Monoclonal Antibody (M06068-1) Images



Anti-ESRP-1 by western blot shows detection of ESRP-1 seen in lane 2. Lane 1: GFP-transfected-293T cell extracts, Lane 2: ESRP-1-transfected-293T cell extracts, Lane 3: ESRP2-transfected 293T cell lysates. Briefly, each lane contains approximately 5 μ g of lysate. Primary antibody was used at a 1:1000 dilution in PBS-T plus milk, and reacted for 1hr at room temperature. The membrane was washed and reacted with a 1:10,000 dilution of an anti-mouse ECL antibody for 1hr at room temperature. Molecular weight estimation was made by comparison to prestained MW markers.

Submit a product review to Biocompare.com

Submit a review of this product to Biocompare.com to receive a \$20 Amazon.com giftcard! Your reviews help your fellow scientists make the right decisions. Thank you for your contribution.



Anti-Esrp-1 Monoclonal Antibody

For Research Use Only. Not for use in diagnostic procedures.