

## Anti-GAPDHS Mouse Monoclonal Antibody [Clone ID: OTI1F6]

Catalog Number: M06121-1

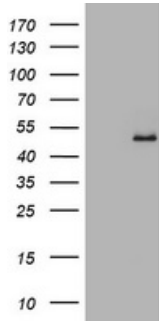
### Overview

Product Name	Anti-GAPDHS Mouse Monoclonal Antibody [Clone ID: OTI1F6]
Reactive Species	Human
Description	Boster Bio GAPDHS mouse monoclonal antibody, clone OTI1F6 (formerly 1F6). Catalog# M06121-1. Tested in IHC, WB. This antibody reacts with Human.
Application	IHC, WB
Clonality	Monoclonal OTI1F6
Formulation	PBS (PH 7.3) containing 1% BSA, 50% glycerol and 0.02% sodium azide.
Storage Instructions	Store at -20°C as received.
Host	Mouse
Uniprot ID	O14556

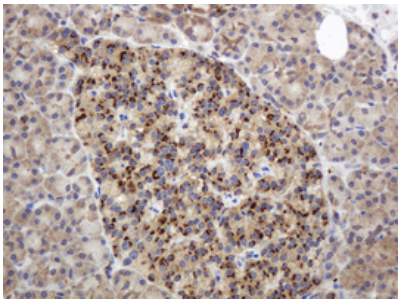
### Technical Details

Immunogen	Full length human recombinant protein of human GAPDHS (NP_055179) produced in HEK293T
Isotype	IgG2a
Concentration	1 mg/ml
Purification	Purified from mouse ascites fluids or tissue culture supernatant by affinity chromatography (protein A/G)
Suggested Dilutions	Dilute the sample so that the expected range of concentrations fall within the detection range of this kit. If the expected range of concentration is unknown, a pilot test should be conducted to decide the optimal dilution ratio for your samples. Some PubMed article(s) citing the expression level of this target are as follows:

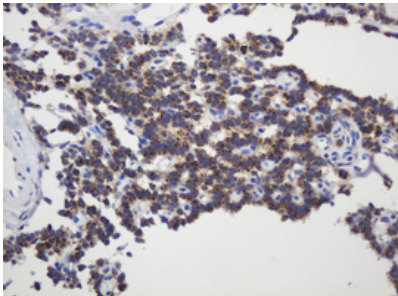
## Anti-GAPDHS Mouse Monoclonal Antibody [Clone ID: OTI1F6] (M06121-1) Images



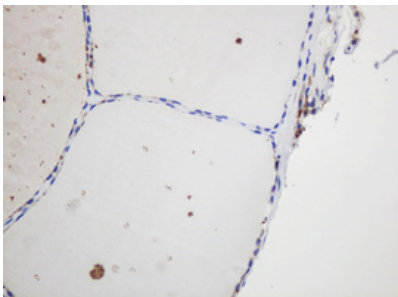
HEK293T cells were transfected with the pCMV6-ENTRY control (Left lane) or pCMV6-ENTRY GAPDHS (Right lane) cDNA for 48 hrs and lysed. Equivalent amounts of cell lysates (5 ug per lane) were separated by SDS-PAGE and immunoblotted with anti-GAPDHS.



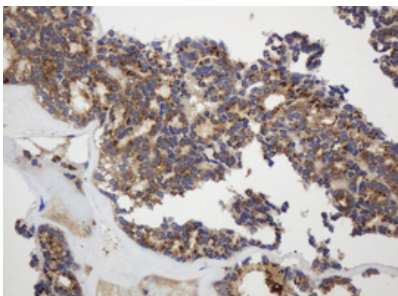
Immunohistochemical staining of paraffin-embedded Human pancreas tissue within the normal limits using anti-GAPDHS mouse monoclonal antibody. (Heat-induced epitope retrieval by 10mM citric buffer)



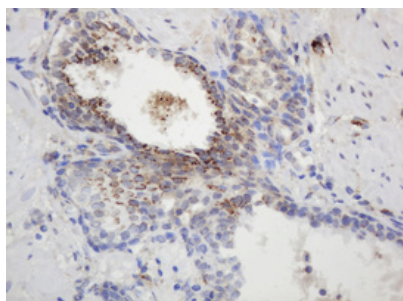
Immunohistochemical staining of paraffin-embedded Carcinoma of Human pancreas tissue using anti-GAPDHS mouse monoclonal antibody. (Heat-induced epitope retrieval by 10mM citric buffer)



Immunohistochemical staining of paraffin-embedded Human thyroid tissue within the normal limits using anti-GAPDHS mouse monoclonal antibody. (Heat-induced epitope retrieval by 10mM citric buffer)



Immunohistochemical staining of paraffin-embedded Carcinoma of Human thyroid tissue using anti-GAPDHS mouse monoclonal antibody. (Heat-induced epitope retrieval by 10mM citric buffer)



Immunohistochemical staining of paraffin-embedded Human prostate tissue within the normal limits using anti-GAPDH mouse monoclonal antibody. (Heat-induced epitope retrieval by 10mM citric buffer)

## Submit a product review to Biocompare.com

Submit a review of this product to Biocompare.com to receive a \$20 Amazon.com giftcard! Your reviews help your fellow scientists make the right decisions. Thank you for your contribution.



Anti-GAPDH Mouse Monoclonal Antibody [Clone ID: OTI1F6]