

Anti-Apc2 (ANAPC2) Mouse Monoclonal Antibody [Clone ID: OTI1A6]

Catalog Number: M06153

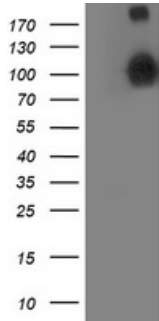
Overview

Product Name	Anti-Apc2 (ANAPC2) Mouse Monoclonal Antibody [Clone ID: OTI1A6]
Reactive Species	Human, Monkey, Mouse, Rat
Description	Boster Bio ANAPC2 (Apc2) mouse monoclonal antibody, clone OTI1A6 (formerly 1A6). Catalog# M06153. Tested in FC, IF, IHC, WB. This antibody reacts with Human, Monkey, Mouse, Rat.
Application	Flow Cytometry, IF, IHC, WB
Clonality	Monoclonal OTI1A6
Formulation	PBS (pH 7.3) containing 1% stabilizing protein, 50% glycerol and 0.02% sodium azide. This antibody is supplied in a stabilized formulation. Compatibility with conjugation reactions depends on the chemistry of the conjugation method used. For conjugation methods that are not compatible with the stabilizing components present in this formulation, a carrier-free antibody format is required.
Storage Instructions	Store at -20°C as received.
Host	Mouse
Uniprot ID	Q9UJX6

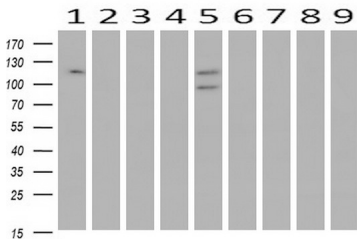
Technical Details

Immunogen	Full length human recombinant protein of human ANAPC2 (NP_037498) produced in HEK293 cell.
Isotype	IgG2a
Concentration	0.74 mg/ml
Purification	Purified from mouse ascites fluids or tissue culture supernatant by affinity chromatography (protein A/G)
Suggested Dilutions	WB 1:500~2000 IHC 1:150 IF 1:100 Flow Cytometry 1:100

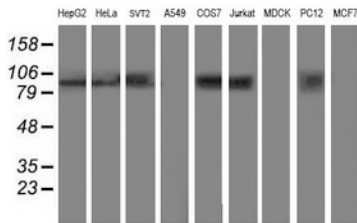
Anti-Apc2 (ANAPC2) Mouse Monoclonal Antibody [Clone ID: OTI1A6] (M06153) Images



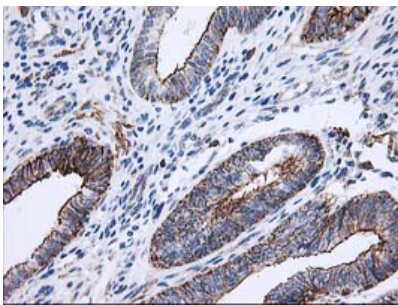
HEK293T cells were transfected with the pCMV6-ENTRY control (Left lane) or pCMV6-ENTRY ANAPC2 (Right lane) cDNA for 48 hrs and lysed. Equivalent amounts of cell lysates (5 ug per lane) were separated by SDS-PAGE and immunoblotted with anti-ANAPC2.



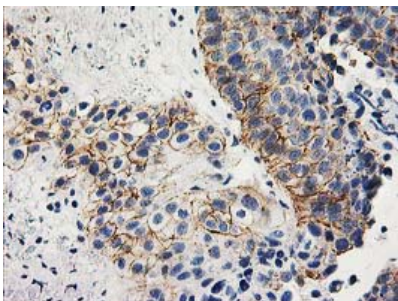
Western blot analysis of extracts (10ug) from 9 Human tissue by using anti-ANAPC2 monoclonal antibody at 1:200 (1: Testis; 2: Omentum; 3: Uterus; 4: Breast; 5: Brain; 6: Liver; 7: Ovary; 8: Thyroid gland; 9: colon).



Western blot analysis of extracts (35ug) from 9 different cell lines by using anti-ANAPC2 monoclonal antibody.

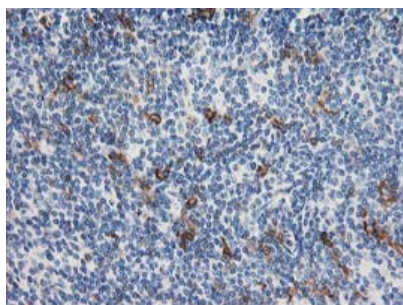


Immunohistochemical staining of paraffin-embedded Adenocarcinoma of Human endometrium tissue using anti-ANAPC2 mouse monoclonal antibody. (Heat-induced epitope retrieval by 10mM citric buffer)

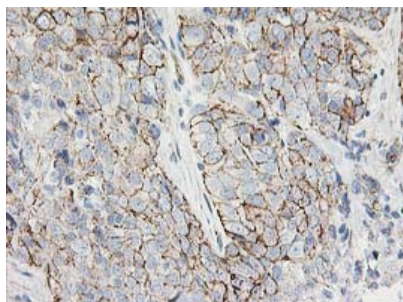


Immunohistochemical staining of paraffin-embedded Carcinoma of Human bladder tissue using anti-ANAPC2 mouse monoclonal antibody. (Heat-induced epitope retrieval by 10mM citric buffer)

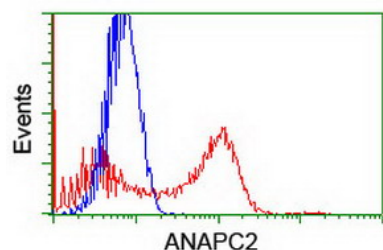
Immunohistochemical staining of paraffin-embedded Human



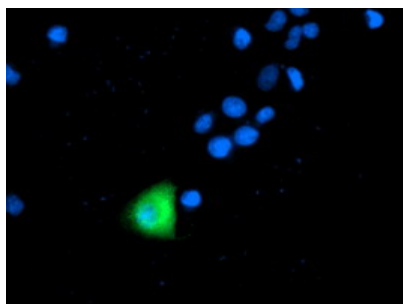
lymphoma tissue using anti-ANAPC2 mouse monoclonal antibody. (Heat-induced epitope retrieval by 10mM citric buffer)



Immunohistochemical staining of paraffin-embedded Adenocarcinoma of Human breast tissue using anti-ANAPC2 mouse monoclonal antibody. (Heat-induced epitope retrieval by 10mM citric buffer)



HEK293T cells transfected with either ANAPC2 (Myc-DDK-tagged) overexpress plasmid (Red) or empty vector control plasmid (Blue) were immunostained by anti-ANAPC2 antibody (M06153)



Anti-ANAPC2 mouse monoclonal antibody (M06153) immunofluorescent staining of COS7 cells transiently transfected by pCMV6-ENTRY ANAPC2.

Submit a product review to Biocompare.com

Submit a review of this product to Biocompare.com to receive a \$20 Amazon.com giftcard! Your reviews help your fellow scientists make the right decisions. Thank you for your contribution.



Anti-Apc2 (ANAPC2) Mouse Monoclonal Antibody [Clone ID: OTI1A6]

For Research Use Only. Not for use in diagnostic procedures.