

## Anti-AP2M1 Mouse Monoclonal Antibody [Clone ID: OTI 2F11]

Catalog Number: M06179-1

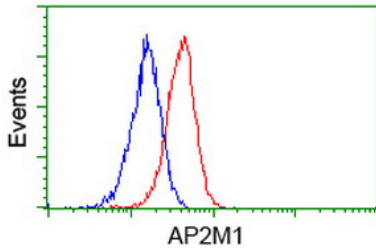
### Overview

Product Name	Anti-AP2M1 Mouse Monoclonal Antibody [Clone ID: OTI 2F11]
Reactive Species	Dog, Human, Mouse, Rat
Description	Boster Bio AP2M1 mouse monoclonal antibody, clone OTI 2F11 (formerly 2F11). Catalog# M06179-1. Tested in FC, IHC, WB. This antibody reacts with Human, Mouse, Rat, Dog.
Conjugate	Unconjugated
Application	Flow Cytometry, IHC, WB
Clonality	Monoclonal OTI 2F11
Formulation	PBS (pH 7.3) containing 1% stabilizing protein, 50% glycerol and 0.02% sodium azide. This antibody is supplied in a stabilized formulation. Compatibility with conjugation reactions depends on the chemistry of the conjugation method used. For conjugation methods that are not compatible with the stabilizing components present in this formulation, a carrier-free antibody format is required.
Storage Instructions	Store at -20°C for one year. For short term storage and frequent use, store at 4°C for up to one month. Avoid repeated freeze-thaw cycles.
Host	Mouse
Uniprot ID	Q96CW1

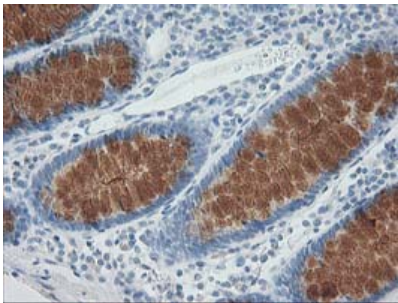
### Technical Details

Immunogen	Human recombinant protein fragment corresponding to amino acids 97-383 of human AP2M1 (NP_001020376) produced in E.coli.
Isotype	IgG1
Concentration	0.98 mg/ml
Purification	Purified from mouse ascites fluids or tissue culture supernatant by affinity chromatography (protein A/G)
Suggested Dilutions	WB 1:500~2000 IHC 1:150 Flow Cytometry 1:100

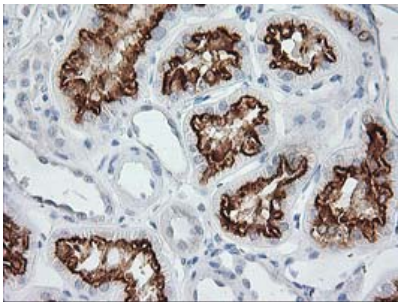
## Anti-AP2M1 Mouse Monoclonal Antibody [Clone ID: OTI 2F11] (M06179-1) Images



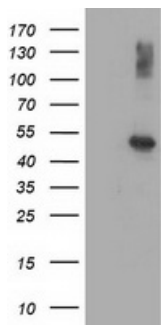
Flow cytometric Analysis of Jurkat cells



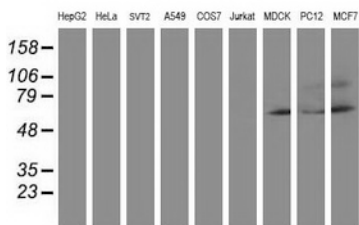
Immunohistochemical staining of paraffin-embedded Human colon tissue within the normal limits using anti-AP2M1 mouse monoclonal antibody. (Heat-induced epitope retrieval by 10mM citric buffer)



Immunohistochemical staining of paraffin-embedded Human Kidney tissue within the normal limits using anti-AP2M1 mouse monoclonal antibody. (Heat-induced epitope retrieval by 10mM citric buffer)



HEK293T cells were transfected with the pCMV6-ENTRY control (Left lane) or pCMV6-ENTRY AP2M1 (Right lane) cDNA for 48 hrs and lysed. Equivalent amounts of cell lysates (5 ug per lane) were separated by SDS-PAGE and immunoblotted with anti-AP2M1.



Western blot analysis of extracts (35ug) from 9 different cell lines by using anti-AP2M1 monoclonal antibody (HepG2: human; HeLa: human; SVT2: mouse; A549: human; COS7: monkey; Jurkat: human; MDCK: canine; PC12: rat; MCF7: human).

Submit a review of this product to Biocompare.com to receive a \$20 Amazon.com giftcard! Your reviews help your fellow scientists make the right decisions. Thank you for your contribution.



Anti-AP2M1 Mouse Monoclonal Antibody [Clone ID: OTI 2F11]

For Research Use Only. Not for use in diagnostic procedures.