

Anti-SH2D2A Mouse Monoclonal Antibody [Clone ID: OTI4F3]

Catalog Number: M06232

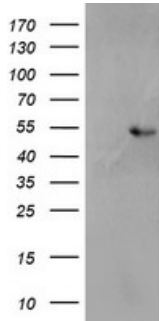
Overview

Product Name	Anti-SH2D2A Mouse Monoclonal Antibody [Clone ID: OTI4F3]
Reactive Species	Human
Description	Boster Bio SH2D2A mouse monoclonal antibody, clone OTI4F3 (formerly 4F3). Catalog# M06232. Tested in FC, IF, IHC, WB. This antibody reacts with Human.
Application	Flow Cytometry, IF, IHC, WB
Clonality	Monoclonal OTI4F3
Formulation	PBS (pH 7.3) containing 1% stabilizing protein, 50% glycerol and 0.02% sodium azide. This antibody is supplied in a stabilized formulation. Compatibility with conjugation reactions depends on the chemistry of the conjugation method used. For conjugation methods that are not compatible with the stabilizing components present in this formulation, a carrier-free antibody format is required.
Storage Instructions	Store at -20°C as received.
Host	Mouse
Uniprot ID	Q9NP31

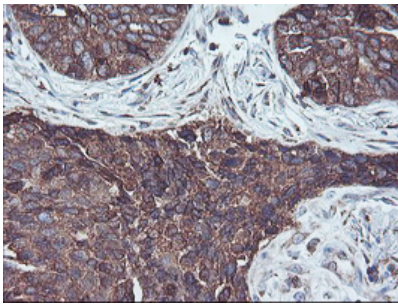
Technical Details

Immunogen	Full length human recombinant protein of human SH2D2A (NP_003966) produced in HEK293T cell.
Isotype	IgG1
Concentration	0.71 mg/ml
Purification	Purified from mouse ascites fluids or tissue culture supernatant by affinity chromatography (protein A/G)
Suggested Dilutions	WB: 1:2000 IHC: 1:150 IF: 1:100 Flow cytometry: 1:100

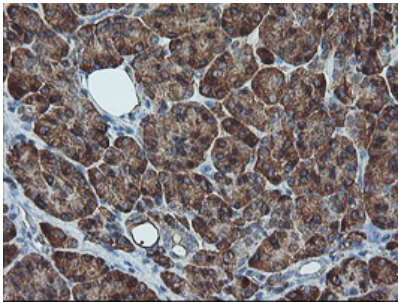
Anti-SH2D2A Mouse Monoclonal Antibody [Clone ID: OTI4F3] (M06232) Images



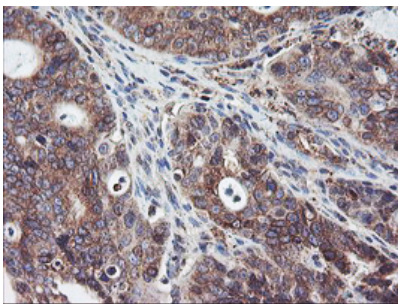
HEK293T cells were transfected with the pCMV6-ENTRY control (Left lane) or pCMV6-ENTRY SH2D2A (Right lane) cDNA for 48 hrs and lysed. Equivalent amounts of cell lysates (5 ug per lane) were separated by SDS-PAGE and immunoblotted with anti-SH2D2A.



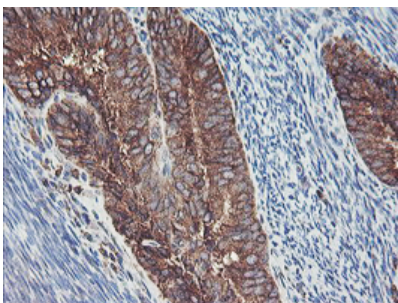
Immunohistochemical staining of paraffin-embedded Carcinoma of Human lung tissue using anti-SH2D2A mouse monoclonal antibody. (Heat-induced epitope retrieval by 10mM citric buffer)



Immunohistochemical staining of paraffin-embedded Human pancreas tissue within the normal limits using anti-SH2D2A mouse monoclonal antibody. (Heat-induced epitope retrieval by 10mM citric buffer)



Immunohistochemical staining of paraffin-embedded Carcinoma of Human pancreas tissue using anti-SH2D2A mouse monoclonal antibody. (Heat-induced epitope retrieval by 10mM citric buffer)



Immunohistochemical staining of paraffin-embedded Adenocarcinoma of Human endometrium tissue using anti-SH2D2A mouse monoclonal antibody. (Heat-induced epitope retrieval by 10mM citric buffer)

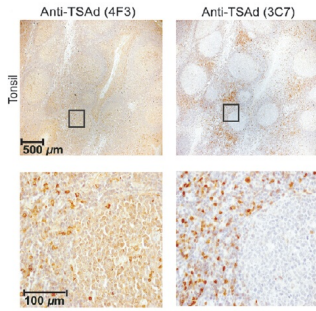
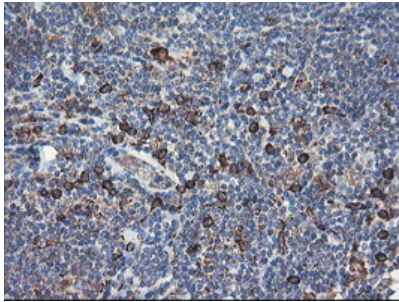
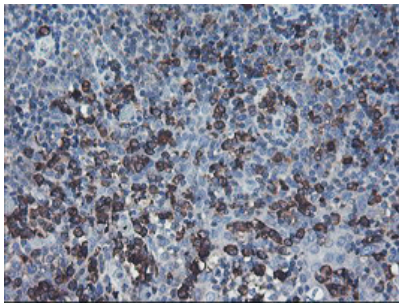


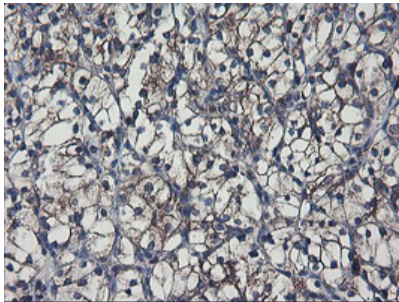
Figure from citation: Comparison of IHC on tonsil with clone 4F3 (M06232) and clone 3C7 SH2D2A mAb and HRP-conjugated secondary antibodies.



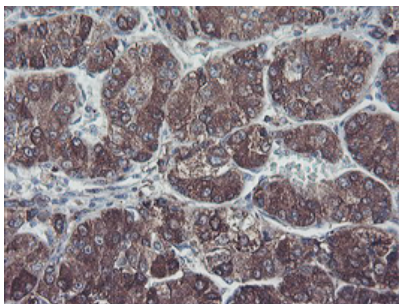
Immunohistochemical staining of paraffin-embedded Human lymphoma tissue using anti-SH2D2A mouse monoclonal antibody. (Heat-induced epitope retrieval by 10mM citric buffer)



Immunohistochemical staining of paraffin-embedded Human tonsil within the normal limits using anti-SH2D2A mouse monoclonal antibody. (Heat-induced epitope retrieval by 10mM citric buffer)

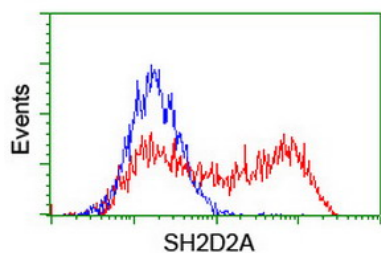


Immunohistochemical staining of paraffin-embedded Carcinoma of Human kidney tissue using anti-SH2D2A mouse monoclonal antibody. (Heat-induced epitope retrieval by 10mM citric buffer)

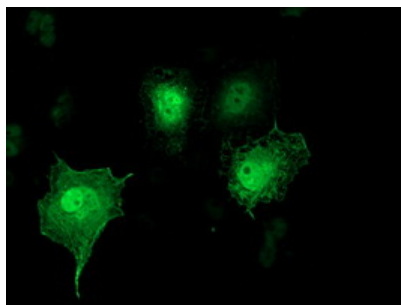


Immunohistochemical staining of paraffin-embedded Carcinoma of Human liver tissue using anti-SH2D2A mouse monoclonal antibody. (Heat-induced epitope retrieval by 10mM citric buffer)

HEK293T cells transfected with either SH2D2A (Myc-DDK-



tagged) overexpress plasmid (Red) or empty vector control plasmid (Blue) were immunostained by anti-SH2D2A antibody (M06232)



Anti-SH2D2A mouse monoclonal antibody (M06232) immunofluorescent staining of COS7 cells transiently transfected by pCMV6-ENTRY SH2D2A.

Submit a product review to Biocompare.com

Submit a review of this product to Biocompare.com to receive a \$20 Amazon.com giftcard! Your reviews help your fellow scientists make the right decisions. Thank you for your contribution.



Anti-SH2D2A Mouse Monoclonal Antibody [Clone ID: OTI4F3]

For Research Use Only. Not for use in diagnostic procedures.