

Anti-SH2D2A Mouse Monoclonal Antibody [Clone ID: OTI3C7]

Catalog Number: M06232-1

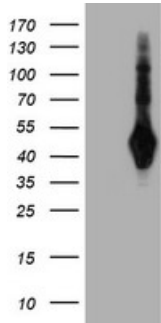
Overview

Product Name	Anti-SH2D2A Mouse Monoclonal Antibody [Clone ID: OTI3C7]
Reactive Species	Human, Monkey, Mouse
Description	Boster Bio SH2D2A mouse monoclonal antibody, clone OTI3C7 (formerly 3C7). Catalog# M06232-1. Tested in FC, IF, IHC, WB. This antibody reacts with Human, Monkey, Mouse.
Application	Flow Cytometry, IF, IHC, WB
Clonality	Monoclonal OTI3C7
Formulation	PBS (pH 7.3) containing 1% stabilizing protein, 50% glycerol and 0.02% sodium azide. This antibody is supplied in a stabilized formulation. Compatibility with conjugation reactions depends on the chemistry of the conjugation method used. For conjugation methods that are not compatible with the stabilizing components present in this formulation, a carrier-free antibody format is required.
Storage Instructions	Store at -20°C as received.
Host	Mouse
Uniprot ID	Q9NP31

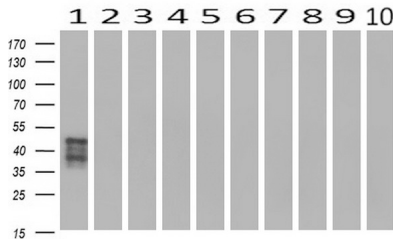
Technical Details

Immunogen	Full length human recombinant protein of human SH2D2A (NP_003966) produced in HEK293T cell.
Isotype	IgG1
Concentration	0.75 mg/ml
Purification	Purified from mouse ascites fluids or tissue culture supernatant by affinity chromatography (protein A/G)
Suggested Dilutions	WB 1:500~2000 IF 1:100 Flow Cytometry 1:100

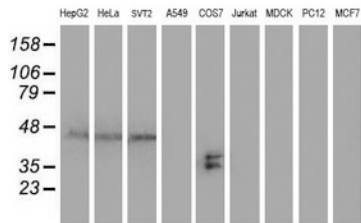
Anti-SH2D2A Mouse Monoclonal Antibody [Clone ID: OTI3C7] (M06232-1) Images



HEK293T cells were transfected with the pCMV6-ENTRY control (Left lane) or pCMV6-ENTRY SH2D2A (Right lane) cDNA for 48 hrs and lysed. Equivalent amounts of cell lysates (5 ug per lane) were separated by SDS-PAGE and immunoblotted with anti-SH2D2A.



Western blot analysis of extracts (10ug) from 10 Human tissue by using anti-SH2D2A monoclonal antibody at 1:200 (1: Testis; 2: Omentum; 3: Uterus; 4: Breast; 5: Brain; 6: Liver; 7: Ovary; 8: Thyroid gland; 9: colon; 10: spleen).



Western blot analysis of extracts (35ug) from 9 different cell lines by using anti-SH2D2A monoclonal antibody.

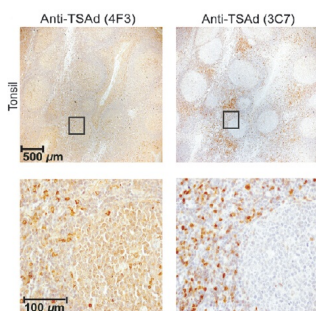
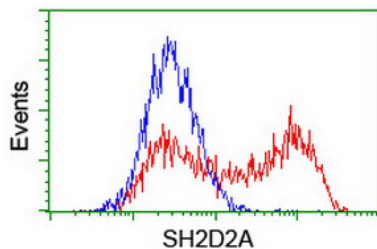
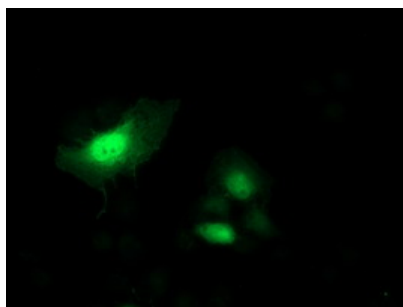


Figure from citation: Comparison of IHC on tonsil with clone 4F3 and clone 3C7 (M06232-1) SH2D2A mAb and HRP-conjugated secondary antibodies.



HEK293T cells transfected with either SH2D2A (Myc-DDK-tagged) overexpress plasmid (Red) or empty vector control plasmid (Blue) were immunostained by anti-SH2D2A antibody (M06232-1)



immunofluorescent staining of COS7 cells transiently transfected by pCMV6-ENTRY SH2D2A.

Submit a product review to Biocompare.com

Submit a review of this product to Biocompare.com to receive a \$20 Amazon.com giftcard! Your reviews help your fellow scientists make the right decisions. Thank you for your contribution.



Anti-SH2D2A Mouse Monoclonal Antibody [Clone ID: OTI3C7]

For Research Use Only. Not for use in diagnostic procedures.