

Anti-PKMYT1 Mouse Monoclonal Antibody [Clone ID: OTI5E1]

Catalog Number: M06247

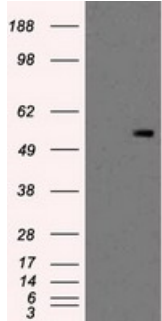
Overview

| | |
|----------------------|--|
| Product Name | Anti-PKMYT1 Mouse Monoclonal Antibody [Clone ID: OTI5E1] |
| Reactive Species | Human, Mouse, Rat |
| Description | Boster Bio PKMYT1 mouse monoclonal antibody, clone OTI5E1 (formerly 5E1). Catalog# M06247. Tested in FC, IF, IHC, WB. This antibody reacts with Human, Mouse, Rat. |
| Application | Flow Cytometry, IF, IHC, WB |
| Clonality | Monoclonal OTI5E1 |
| Formulation | PBS (pH 7.3) containing 1% stabilizing protein, 50% glycerol and 0.02% sodium azide. This antibody is supplied in a stabilized formulation. Compatibility with conjugation reactions depends on the chemistry of the conjugation method used. For conjugation methods that are not compatible with the stabilizing components present in this formulation, a carrier-free antibody format is required. |
| Storage Instructions | Store at -20°C as received. |
| Host | Mouse |
| Uniprot ID | Q99640 |

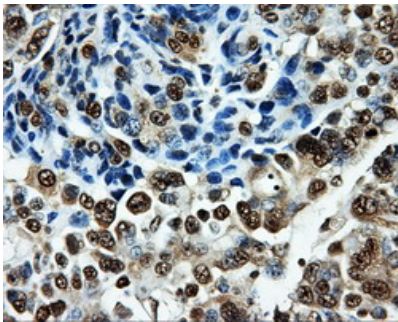
Technical Details

| | |
|---------------------|---|
| Immunogen | Full length human recombinant protein of human PKMYT1 (NP_004194) produced in HEK293T cell. |
| Isotype | IgG2a |
| Concentration | 0.69 mg/ml |
| Purification | Purified from mouse ascites fluids or tissue culture supernatant by affinity chromatography (protein A/G) |
| Suggested Dilutions | WB 1:500 IHC 1:50 IF 1:100 Flow Cytometry 1:100 |

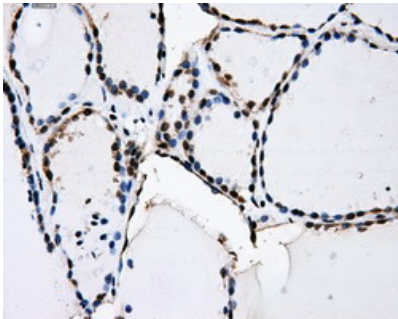
Anti-PKMYT1 Mouse Monoclonal Antibody [Clone ID: OTI5E1] (M06247) Images



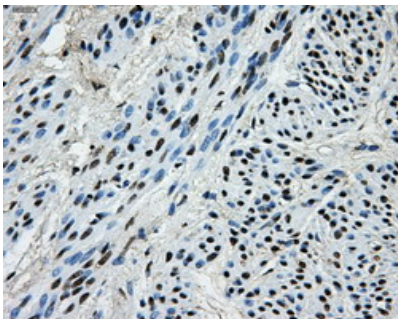
HEK293T cells were transfected with the pCMV6-ENTRY control (Left lane) or pCMV6-ENTRY PKMYT1 (Right lane) cDNA for 48 hrs and lysed. Equivalent amounts of cell lysates (5 ug per lane) were separated by SDS-PAGE and immunoblotted with anti-PKMYT1.



Immunohistochemical staining of paraffin-embedded Adenocarcinoma of Human ovary tissue using anti-PKMYT1 mouse monoclonal antibody. (Heat-induced epitope retrieval by 10mM citric buffer)

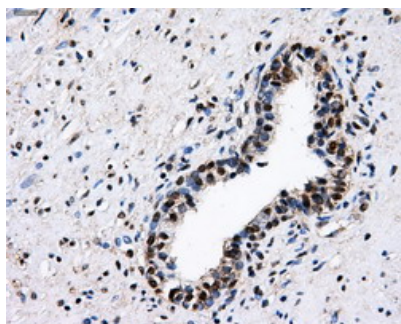


Immunohistochemical staining of paraffin-embedded Human thyroid tissue within the normal limits using anti-PKMYT1 mouse monoclonal antibody. (Heat-induced epitope retrieval by 10mM citric buffer)

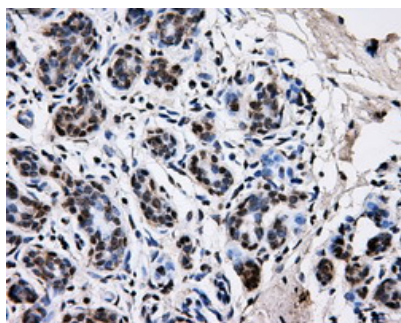


Immunohistochemical staining of paraffin-embedded Human endometrium tissue within the normal limits using anti-PKMYT1 mouse monoclonal antibody. (Heat-induced epitope retrieval by 10mM citric buffer)

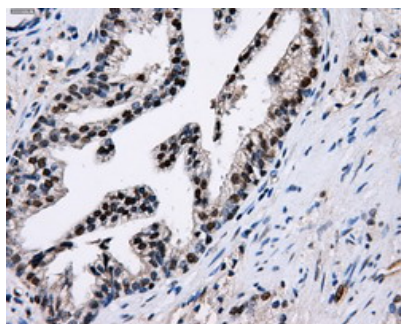
Immunohistochemical staining of paraffin-embedded Human prostate tissue within the normal limits using anti-PKMYT1 mouse monoclonal antibody. (Heat-induced epitope retrieval by 10mM citric buffer)



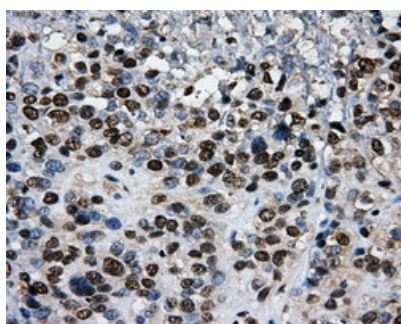
Immunohistochemical staining of paraffin-embedded Human breast tissue within the normal limits using anti-PKMYT1 mouse monoclonal antibody. (Heat-induced epitope retrieval by 10mM citric buffer)



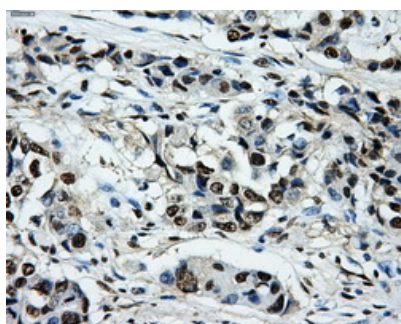
Immunohistochemical staining of paraffin-embedded Carcinoma of Human prostate tissue using anti-PKMYT1 mouse monoclonal antibody. (Heat-induced epitope retrieval by 10mM citric buffer)

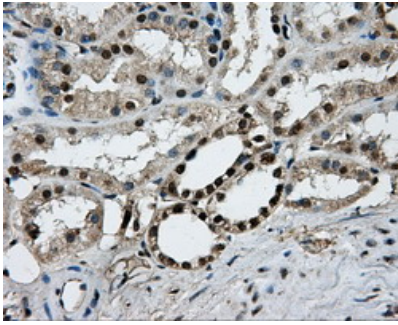


Immunohistochemical staining of paraffin-embedded Carcinoma of Human bladder tissue using anti-PKMYT1 mouse monoclonal antibody. (Heat-induced epitope retrieval by 10mM citric buffer)

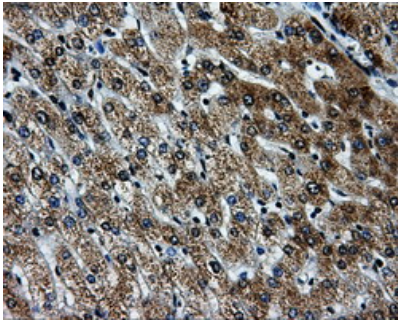


Immunohistochemical staining of paraffin-embedded Adenocarcinoma of Human breast tissue using anti-PKMYT1 mouse monoclonal antibody. (Heat-induced epitope retrieval by 10mM citric buffer)

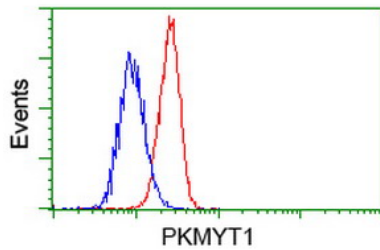




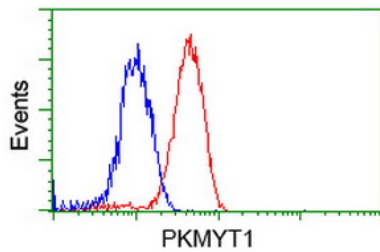
Immunohistochemical staining of paraffin-embedded Human Kidney tissue within the normal limits using anti-PKMYT1 mouse monoclonal antibody. (Heat-induced epitope retrieval by 10mM citric buffer)



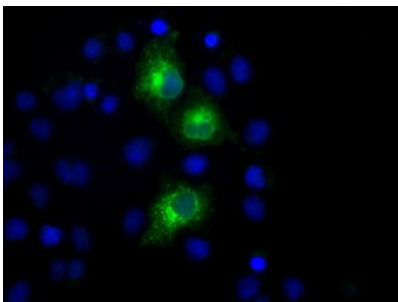
Immunohistochemical staining of paraffin-embedded Human liver tissue within the normal limits using anti-PKMYT1 mouse monoclonal antibody. (Heat-induced epitope retrieval by 10mM citric buffer)



Flow cytometric Analysis of Hela cells



Flow cytometric Analysis of Jurkat cells



Anti-PKMYT1 mouse monoclonal antibody (M06247) immunofluorescent staining of COS7 cells transiently transfected by pCMV6-ENTRY PKMYT1.

Submit a product review to [Biocompare.com](https://www.biocompare.com)

Submit a review of this product to [Biocompare.com](https://www.biocompare.com) to receive a \$20 Amazon.com giftcard! Your



reviews help your fellow scientists make the right decisions. Thank you for your contribution.

Anti-PKMYT1 Mouse Monoclonal Antibody [Clone ID: OT15E1]

For Research Use Only. Not for use in diagnostic procedures.