

## Anti-Renalase Rabbit Monoclonal Antibody

Catalog Number: M06291

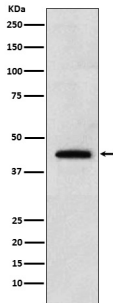
### Overview

Product Name	Anti-Renalase Rabbit Monoclonal Antibody
Reactive Species	Human, Mouse, Rat
Description	Boster Bio Anti-Renalase Rabbit Monoclonal Antibody catalog # M06291. Tested in WB, IHC, ICC/IF applications. This antibody reacts with Human, Mouse, Rat.
Application	IF, IHC, ICC, WB
Clonality	Monoclonal 23R07
Formulation	Rabbit IgG in stabilizing components, phosphate buffered saline, pH 7.4, 150mM NaCl, 0.02% sodium azide and 50% glycerol. *This antibody is supplied in a stabilized formulation. Compatibility with conjugation reactions depends on the chemistry of the conjugation method used. For conjugation methods that are not compatible with the stabilizing components present in this formulation, a carrier-free antibody format is required.
Storage Instructions	Store at -20°C for one year. For short term storage and frequent use, store at 4°C for up to one month. Avoid repeated freeze-thaw cycles.
Host	Rabbit
Uniprot ID	Q5VYX0

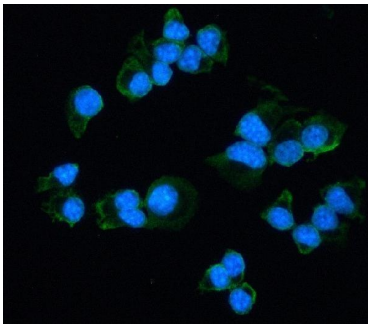
### Technical Details

Immunogen	A synthesized peptide derived from human Renalase
Isotype	IgG
Form	Liquid
Concentration	0.5mg/ml
Purification	Affinity-chromatography
Suggested Dilutions	WB 1:500-2000 IHC 1:50-200

## Anti-Renalase Rabbit Monoclonal Antibody (M06291) Images



Western blot analysis of Renalase expression in 293T cell lysate.



ICC/IF analysis of Renalase using anti-Renalase antibody (M06291). Renalase was detected in an immunocytochemical section of mouse Beta-TC6 cells. The cells were fixed with 4% paraformaldehyde for 10 minutes and then treated with a membrane permeabilization agent (AR0205) for 5 minutes. The cells were blocked with 10% goat serum. And then incubated with rabbit anti-Renalase Antibody (M06291) at a dilution of 1:50 overnight at 4°C. DyLight®488 Conjugated Goat Anti-Rabbit IgG (BA1127) was used as secondary antibody at 1:500 dilution and incubated for 30 minutes at 37°C. The section was counterstained with DAPI. Visualize using a fluorescence microscope and filter sets appropriate for the label used.

## 1 Publications Citing This Product

1. PubMed ID: 10.1371/journal.pone.0046442, Renalases Expression and Distribution in Renal Tissue and Cells

Visit [bosterbio.com/anti-renalase-rabbit-monoclonal-antibody-m06291-boster.html](http://bosterbio.com/anti-renalase-rabbit-monoclonal-antibody-m06291-boster.html) to see all 1 publications.

## Submit a product review to Biocompare.com

Submit a review of this product to Biocompare.com to receive a \$20 Amazon.com giftcard! Your reviews help your fellow scientists make the right decisions. Thank you for your contribution.



Anti-Renalase Rabbit Monoclonal Antibody

For Research Use Only. Not for use in diagnostic procedures.