

## Anti-CENPH Mouse Monoclonal Antibody [Clone ID: OTI2G4]

Catalog Number: M06302

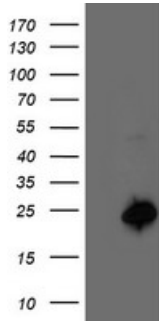
### Overview

Product Name	Anti-CENPH Mouse Monoclonal Antibody [Clone ID: OTI2G4]
Reactive Species	Human
Description	Boster Bio CENPH mouse monoclonal antibody, clone OTI2G4 (formerly 2G4). Catalog# M06302. Tested in FC, IHC, WB. This antibody reacts with Human.
Application	Flow Cytometry, IHC, WB
Clonality	Monoclonal OTI2G4
Formulation	PBS (pH 7.3) containing 1% stabilizing protein, 50% glycerol and 0.02% sodium azide. This antibody is supplied in a stabilized formulation. Compatibility with conjugation reactions depends on the chemistry of the conjugation method used. For conjugation methods that are not compatible with the stabilizing components present in this formulation, a carrier-free antibody format is required.
Storage Instructions	Store at -20°C as received.
Host	Mouse
Uniprot ID	Q9H3R5

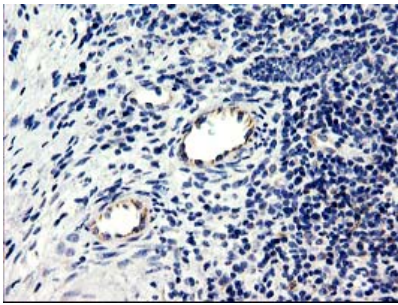
### Technical Details

Immunogen	Full length human recombinant protein of human CENPH (NP_075060) produced in HEK293T cell.
Isotype	IgG1
Concentration	0.81 mg/ml
Purification	Purified from mouse ascites fluids or tissue culture supernatant by affinity chromatography (protein A/G)
Suggested Dilutions	WB 1:500 IHC 1:150 Flow Cytometry 1:100

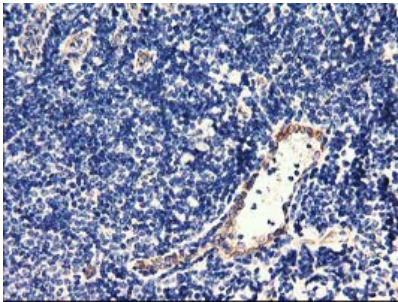
## Anti-CENPH Mouse Monoclonal Antibody [Clone ID: OTI2G4] (M06302) Images



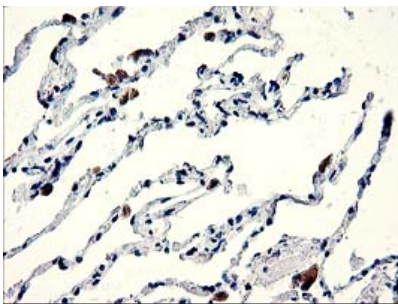
HEK293T cells were transfected with the pCMV6-ENTRY control (Left lane) or pCMV6-ENTRY CENPH (Right lane) cDNA for 48 hrs and lysed. Equivalent amounts of cell lysates (5 ug per lane) were separated by SDS-PAGE and immunoblotted with anti-CENPH.



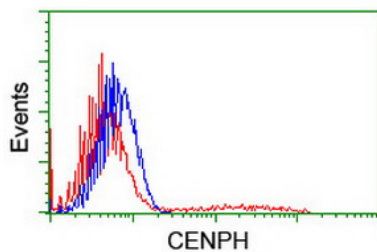
Immunohistochemical staining of paraffin-embedded Carcinoma of Human bladder tissue using anti-CENPH mouse monoclonal antibody. (Heat-induced epitope retrieval by 10mM citric buffer)



Immunohistochemical staining of paraffin-embedded Human tonsil within the normal limits using anti-CENPH mouse monoclonal antibody. (Heat-induced epitope retrieval by 10mM citric buffer)



Immunohistochemical staining of paraffin-embedded Human lung tissue within the normal limits using anti-CENPH mouse monoclonal antibody. (Heat-induced epitope retrieval by 10mM citric buffer)



HEK293T cells transfected with either CENPH (Myc-DDK-tagged) overexpress plasmid (Red) or empty vector control plasmid (Blue) were immunostained by anti-CENPH antibody (M06302)

## Submit a product review to Biocompare.com

Submit a review of this product to Biocompare.com to receive a \$20 Amazon.com giftcard! Your reviews help your fellow scientists make the right decisions. Thank you for your contribution.



Anti-CENPH Mouse Monoclonal Antibody [Clone ID: OTI2G4]

For Research Use Only. Not for use in diagnostic procedures.