

## Anti-CENPH Mouse Monoclonal Antibody [Clone ID: OTI2A11]

Catalog Number: M06302-1

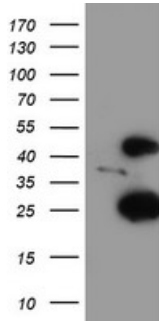
### Overview

|                      |  |
|----------------------|--|
| Product Name         | Anti-CENPH Mouse Monoclonal Antibody [Clone ID: OTI2A11]   |
| Reactive Species     | Human  |
| Description          | Boster Bio CENPH mouse monoclonal antibody, clone OTI2A11 (formerly 2A11). Catalog# M06302-1. Tested in FC, IF, WB. This antibody reacts with Human.   |
| Application          | Flow Cytometry, IF, WB   |
| Clonality            | Monoclonal OTI2A11   |
| Formulation          | PBS (pH 7.3) containing 1% stabilizing protein, 50% glycerol and 0.02% sodium azide. This antibody is supplied in a stabilized formulation. Compatibility with conjugation reactions depends on the chemistry of the conjugation method used. For conjugation methods that are not compatible with the stabilizing components present in this formulation, a carrier-free antibody format is required. |
| Storage Instructions | Store at -20°C as received.  |
| Host                 | Mouse  |
| Uniprot ID           | Q9H3R5   |

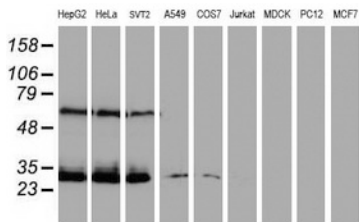
### Technical Details

|                     |   |
|---------------------|---|
| Immunogen           | Full length human recombinant protein of human CENPH (NP_075060) produced in HEK293T cell.                |
| Isotype             | IgG2b   |
| Concentration       | 0.88 mg/ml  |
| Purification        | Purified from mouse ascites fluids or tissue culture supernatant by affinity chromatography (protein A/G) |
| Suggested Dilutions | WB 1:2000<br>IF 1:100<br>Flow Cytometry 1:100   |

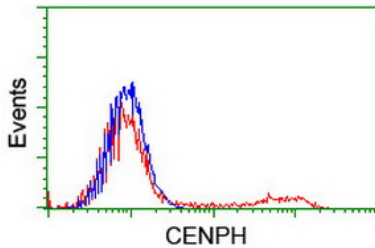
## Anti-CENPH Mouse Monoclonal Antibody [Clone ID: OTI2A11] (M06302-1) Images



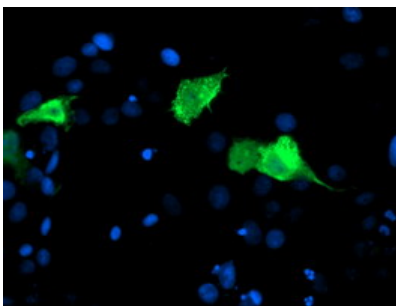
HEK293T cells were transfected with the pCMV6-ENTRY control (Left lane) or pCMV6-ENTRY CENPH (Right lane) cDNA for 48 hrs and lysed. Equivalent amounts of cell lysates (5 ug per lane) were separated by SDS-PAGE and immunoblotted with anti-CENPH.



Western blot analysis of extracts (35ug) from 9 different cell lines by using anti-CENPH monoclonal antibody (HepG2: human; HeLa: human; SVT2: mouse; A549: human; COS7: monkey; Jurkat: human; MDCK: canine; PC12: rat; MCF7: human).



HEK293T cells transfected with either CENPH (Myc-DDK-tagged) overexpress plasmid (Red) or empty vector control plasmid (Blue) were immunostained by anti-CENPH antibody (M06302-1)



Anti-CENPH mouse monoclonal antibody (M06302-1) immunofluorescent staining of COS7 cells transiently transfected by pCMV6-ENTRY CENPH.

Submit a product review to [Biocompare.com](https://www.biocompare.com)

Submit a review of this product to [Biocompare.com](https://www.biocompare.com) to receive a \$20 Amazon.com giftcard! Your reviews help your fellow scientists make the right decisions. Thank you for your contribution.



Anti-CENPH Mouse Monoclonal Antibody [Clone ID: OTI2A11]

For Research Use Only. Not for use in diagnostic procedures.