

## Anti-PYGL Antibody (C-Term)

Catalog Number: M06317

### About PYGL

Phosphorylase is an important allosteric enzyme in carbohydrate metabolism. Enzymes from different sources differ in their regulatory mechanisms and in their natural substrates. However, all known phosphorylases share catalytic and structural properties.

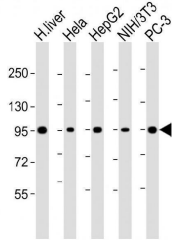
### Overview

Product Name	Anti-PYGL Antibody (C-Term)
Reactive Species	Human, Mouse
Description	Boster Bio Anti-PYGL Antibody (C-Term) (Catalog # M06317). Tested in WB, IHC-P application(s). This antibody reacts with Human, Mouse.
Application	IHC-P, WB
Clonality	Polyclonal
Formulation	Purified polyclonal antibody supplied in PBS with 0.09% (W/V) sodium azide.
Storage Instructions	Maintain refrigerated at 2-8°C for up to 2 weeks. For long-term storage, store at -20°C in small aliquots to prevent freeze-thaw cycles.
Host	Rabbit
Uniprot ID	P06737

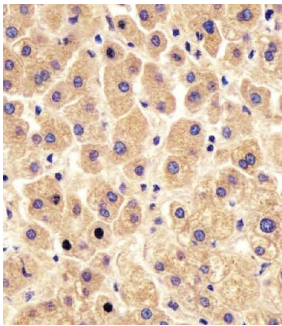
### Technical Details

Immunogen	This PYGL antibody is generated from a rabbit immunized with a KLH conjugated synthetic peptide between 809-843 amino acids from human PYGL.
Predicted Reactive Species	Human, Mouse
Isotype	Rabbit IgG
Purification	This antibody is purified through a protein A column, followed by peptide affinity purification.
Suggested Dilutions	WB: 1:2000 IHC-P: 1:25

## Anti-PYGL Antibody (C-Term) (M06317) Images



All lanes : Anti-PYGL Antibody (C-Term) at 1:2000 dilution  
Lane 1: human liver lysate  
Lane 2: Hela whole cell lysate  
Lane 3: HepG2 whole cell lysate  
Lane 4: NIH/3T3 whole cell lysate  
Lane 5: PC-3 whole cell lysate  
Lysates/proteins at 20 µg per lane. Secondary Goat Anti-Rabbit IgG, (H+L), Peroxidase conjugated at 1/10000 dilution. Predicted band size : 97 kDa  
Blocking/Dilution buffer: 5% NFD/MTBST.



M06317 staining PYGL in human liver tissue sections by Immunohistochemistry (IHC-P -paraformaldehyde-fixed, paraffin-embedded sections). Tissue was fixed with formaldehyde and blocked with 3% BSA for 0.5 hour at room temperature; antigen retrieval was by heat mediation with a citrate buffer (pH6). Samples were incubated with primary antibody (1/25) for 1 hours at 37°C. A undiluted biotinylated goat polyvalent antibody was used as the secondary antibody.

### Submit a product review to [Biocompare.com](https://www.biocompare.com)

Submit a review of this product to [Biocompare.com](https://www.biocompare.com) to receive a \$20 Amazon.com giftcard! Your reviews help your fellow scientists make the right decisions. Thank you for your contribution.



### Anti-PYGL Antibody (C-Term)

For Research Use Only. Not for use in diagnostic procedures.