

## Anti-CDH6 / K-Cadherin Reference Antibody (HKT288)

Catalog Number: M06353-1

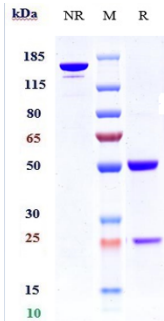
### Overview

Product Name	Anti-CDH6 / K-Cadherin Reference Antibody (HKT288)
Reactive Species	Human
Description	Boster Bio Anti-CDH6 / K-Cadherin Reference Antibody (HKT288) (Catalog # M06353-1). Tested in Flow Cytometry, ELISA, FTA. This antibody reacts with Human. Endotoxin: < 0.905EU/ug,determined by LAL method. Expression system: CHO Cell
Application	ELISA, Flow Cytometry, Functional Assay, Kinetics
Clonality	Monoclonal
Formulation	Purified monoclonal antibody supplied in PBS, pH6.0, without preservative.This antibody is purified through a protein A column.
Storage Instructions	Maintain refrigerated at 2-8°C for up to 2 weeks. For long-term storage, aliquot and store at -20°C to avoid repeated freeze-thaw cycles.
Uniprot ID	P55285

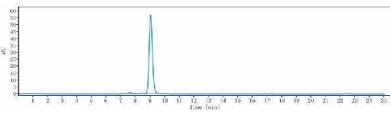
### Technical Details

Isotype	IgG1
Form	Liquid

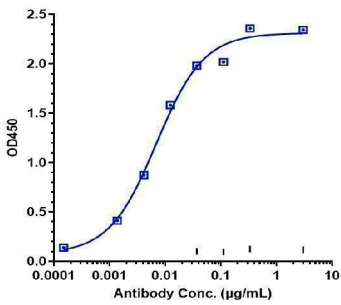
## Anti-CDH6 / K-Cadherin Reference Antibody (HKT288) (M06353-1) Images



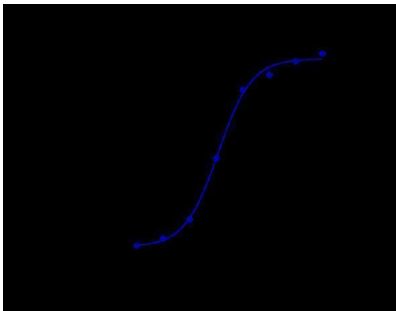
Anti-CDH6/K-Cadherin Reference Antibody (HKT288) on SDS-PAGE under reducing (R) condition. The gel was stained with Coomassie Blue. The purity of the protein is greater than 95%



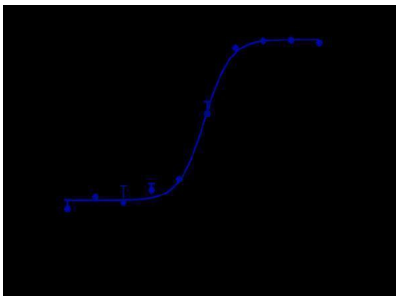
The purity of Anti-CDH6/K-Cadherin Reference Antibody (HKT288) is more than 97.93%



Immobilized Cyno CDH6 His at 2 µg/mL can bind Anti-CDH6/K-Cadherin Reference Antibody (HKT288)

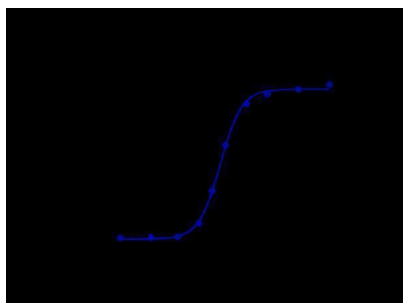


Human CDH6 HEK293(A6) cells were stained with Anti-CDH6/K-Cadherin Reference Antibody (HKT288) and negative control protein respectively



The endocytosis ratio HKT288 by Hu-CDH6-HEK293(A6) increased with the increase of antibody concentration

HKT288 induced OVCAR3 Luciferase activity was evaluated using huCD16a(V158)-NF-AT-Jurkat Reporter Cell. The EC50 was approximately 0.6792 nM.



## Submit a product review to Biocompare.com

Submit a review of this product to Biocompare.com to receive a \$20 Amazon.com giftcard! Your reviews help your fellow scientists make the right decisions. Thank you for your contribution.



Anti-CDH6 / K-Cadherin Reference Antibody (HKT288)

For Research Use Only. Not for use in diagnostic procedures.