

Anti-DCLRE1B Mouse Monoclonal Antibody [Clone ID: OTI2B7]

Catalog Number: M06378

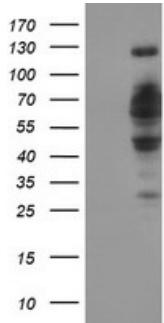
Overview

Product Name	Anti-DCLRE1B Mouse Monoclonal Antibody [Clone ID: OTI2B7]
Reactive Species	Human, Rat
Description	Boster Bio DCLRE1B mouse monoclonal antibody, clone OTI2B7 (formerly 2B7). Catalog# M06378. Tested in FC, IF, IHC, WB. This antibody reacts with Human, Rat.
Application	Flow Cytometry, IF, IHC, WB
Clonality	Monoclonal OTI2B7
Formulation	PBS (pH 7.3) containing 1% stabilizing protein, 50% glycerol and 0.02% sodium azide. This antibody is supplied in a stabilized formulation. Compatibility with conjugation reactions depends on the chemistry of the conjugation method used. For conjugation methods that are not compatible with the stabilizing components present in this formulation, a carrier-free antibody format is required.
Storage Instructions	Store at -20°C as received.
Host	Mouse
Uniprot ID	Q9H816

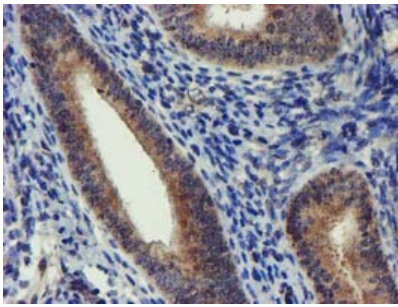
Technical Details

Immunogen	Human recombinant protein fragment corresponding to amino acids 1-280 of human DCLRE1B (NP_073747) produced in E.coli.
Isotype	IgG1
Concentration	0.62 mg/ml
Purification	Purified from mouse ascites fluids or tissue culture supernatant by affinity chromatography (protein A/G)
Suggested Dilutions	WB 1:200~500 IHC 1:150 Flow Cytometry 1:100

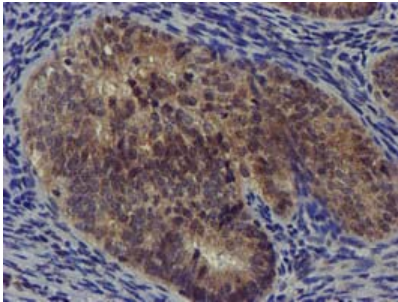
Anti-DCLRE1B Mouse Monoclonal Antibody [Clone ID: OTI2B7] (M06378) Images



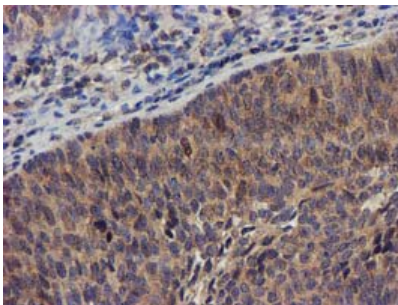
HEK293T cells were transfected with the pCMV6-ENTRY control (Left lane) or pCMV6-ENTRY DCLRE1B (Right lane) cDNA for 48 hrs and lysed. Equivalent amounts of cell lysates (5 ug per lane) were separated by SDS-PAGE and immunoblotted with anti-DCLRE1B.



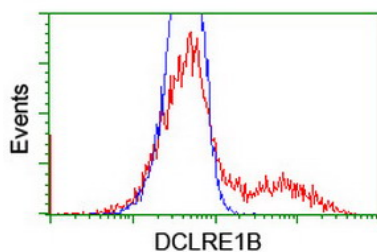
Immunohistochemical staining of paraffin-embedded Human endometrium tissue within the normal limits using anti-DCLRE1B mouse monoclonal antibody. (Heat-induced epitope retrieval by 10mM citric buffer)



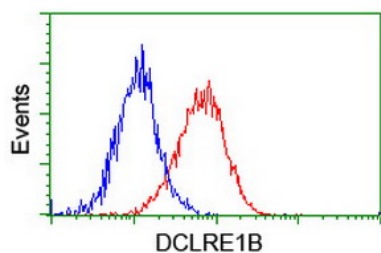
Immunohistochemical staining of paraffin-embedded Adenocarcinoma of Human endometrium tissue using anti-DCLRE1B mouse monoclonal antibody. (Heat-induced epitope retrieval by 10mM citric buffer)



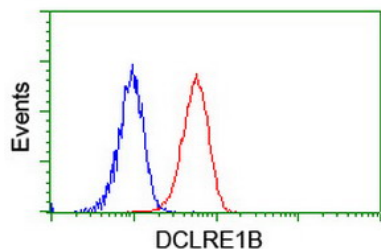
Immunohistochemical staining of paraffin-embedded Carcinoma of Human bladder tissue using anti-DCLRE1B mouse monoclonal antibody. (Heat-induced epitope retrieval by 10mM citric buffer)



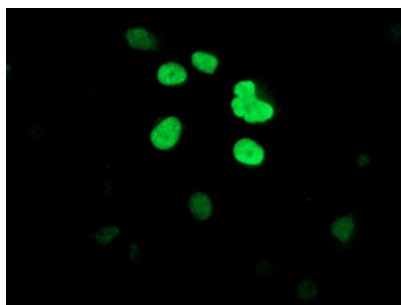
HEK293T cells transfected with either DCLRE1B (Myc-DDK-tagged) overexpress plasmid (Red) or empty vector control plasmid (Blue) were immunostained by anti-DCLRE1B antibody (M06378)



Flow cytometric Analysis of Hela cells



Flow cytometric Analysis of Jurkat cells



Anti-DCLRE1B mouse monoclonal antibody (M06378) immunofluorescent staining of COS7 cells transiently transfected by pCMV6-ENTRY DCLRE1B (1:100).

Submit a product review to Biocompare.com

Submit a review of this product to Biocompare.com to receive a \$20 Amazon.com giftcard! Your reviews help your fellow scientists make the right decisions. Thank you for your contribution.



Anti-DCLRE1B Mouse Monoclonal Antibody [Clone ID: OTI2B7]

For Research Use Only. Not for use in diagnostic procedures.