

## Anti-DKK2 Antibody

Catalog Number: M06431

### About DKK2

Antagonizes canonical Wnt signaling by inhibiting LRP5/6 interaction with Wnt and by forming a ternary complex with the transmembrane protein KREMEN that promotes internalization of LRP5/6. DKKs play an important role in vertebrate development, where they locally inhibit Wnt regulated processes such as antero- posterior axial patterning, limb development, somitogenesis and eye formation. In the adult, Dkks are implicated in bone formation and bone disease, cancer and Alzheimer disease (By similarity).

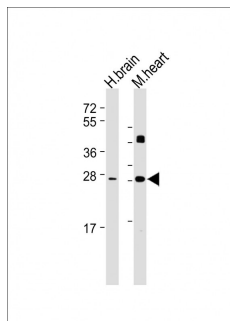
### Overview

Product Name	Anti-DKK2 Antibody
Reactive Species	Human, Mouse
Description	Boster Bio Anti-DKK2 Antibody (Catalog # M06431). Tested in WB application(s). This antibody reacts with Human, Mouse.
Application	WB
Clonality	Monoclonal 1833CT856.7.20
Formulation	Purified monoclonal antibody supplied in PBS with 0.09% (W/V) sodium azide.
Storage Instructions	Maintain refrigerated at 2-8°C for up to 2 weeks. For long-term storage, store at -20°C in small aliquots to prevent freeze-thaw cycles.
Host	Mouse
Uniprot ID	Q9UBU2

### Technical Details

Immunogen	This DKK2 antibody is generated from a mouse immunized with a recombinant protein of human DKK2.
Predicted Reactive Species	Human, Mouse
Isotype	IgG1,k
Purification	This antibody is purified through a protein G column, followed by dialysis against PBS.
Suggested Dilutions	WB: 1:2000

## Anti-DKK2 Antibody (M06431) Images



All lanes : Anti-DKK2 Antibody at 1:2000 dilution  
Lane 1: Human brain lysate  
Lane 2: Mouse heart lysate  
Lysates/proteins at 20 µg per lane. Secondary Goat Anti-mouse IgG, (H+L), Peroxidase conjugated at 1/10000 dilution. Predicted band size : 28 kDa  
Blocking/Dilution buffer: 5% NFDM/TBST.

## Submit a product review to Biocompare.com

Submit a review of this product to Biocompare.com to receive a \$20 Amazon.com giftcard! Your reviews help your fellow scientists make the right decisions. Thank you for your contribution.



Anti-DKK2 Antibody

For Research Use Only. Not for use in diagnostic procedures.