

Anti-MTHFD2 Antibody (C-term)

Catalog Number: M06465

About MTHFD2

Antagonizes canonical Wnt signaling by inhibiting LRP5/6 interaction with Wnt and by forming a ternary complex with the transmembrane protein KREMEN that promotes internalization of LRP5/6. DKKs play an important role in vertebrate development, where they locally inhibit Wnt regulated processes such as antero- posterior axial patterning, limb development, somitogenesis and eye formation. In the adult, Dkks are implicated in bone formation and bone disease, cancer and Alzheimer disease (By similarity).

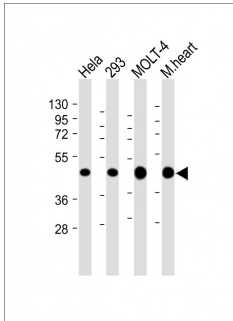
Overview

Product Name	Anti-MTHFD2 Antibody (C-term)
Reactive Species	Human, Mouse
Description	Boster Bio Anti-MTHFD2 Antibody (C-term) (Catalog # M06465). Tested in WB application(s). This antibody reacts with Human, Mouse.
Application	WB
Clonality	Monoclonal 1985CT220.118.31
Formulation	Purified monoclonal antibody supplied in PBS with 0.09% (W/V) sodium azide.
Storage Instructions	Maintain refrigerated at 2-8°C for up to 2 weeks. For long-term storage, store at -20°C in small aliquots to prevent freeze-thaw cycles.
Host	Mouse
Uniprot ID	P13995

Technical Details

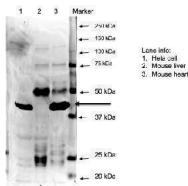
Immunogen	This MTHFD2 antibody is generated from a mouse immunized with a KLH conjugated synthetic peptide between 266-299 amino acids from the C-terminal region of human MTHFD2.
Predicted Reactive Species	Human, Mouse
Isotype	IgG1,kappa
Purification	This antibody is purified through a protein G column, followed by dialysis against PBS.
Suggested Dilutions	WB: 1:4000

Anti-MTHFD2 Antibody (C-term) (M06465) Images



All lanes : Anti-MTHFD2 Antibody (C-term) at 1:4000 dilution
Lane 1: HeLa whole cell lysate
Lane 2: 293 whole cell lysate
Lane 3: MOLT-4 whole cell lysate
Lane 4: Mouse heart lysate
Lysates/proteins at 20 µg per lane. Secondary Goat Anti-mouse IgG, (H+L), Peroxidase conjugated at 1/10000 dilution. Predicted band size : 38 kDa
Blocking/Dilution buffer: 5% NFDM/TBST.

MTHFD2 antibody TEST



40 µg protein of mouse heart lysate per lane at 10% SDS. MTHFD2 antibody M06465 (1:2000)
Conclusion: This antibody works with the sample on WB.
MTHFD2 protein is expected to be around 40 kDa and there is one strong band around the right size indicated by a black arrow. The background is not very clean.

Western blot analysis of MTHFD2 using anti-MTHFD2 Antibody (M06465). Electrophoresis was performed on a 5-20% SDS-PAGE gel at 70V (Stacking gel) / 90V (Resolving gel) for 2-3 hours. The sample well of each lane was loaded with 30 µg of sample under reducing conditions. After electrophoresis, proteins were transferred to a nitrocellulose membrane at 150 mA for 50-90 minutes. Blocked the membrane with 5% non-fat milk/TBS for 1.5 hour at RT. The membrane was incubated with rabbit anti-MTHFD2 antigen affinity purified polyclonal antibody (M06465) at 1:2000 overnight at 4°C, then washed with TBS-0.1% Tween 3 times with 5 minutes each and probed with a goat anti-rabbit IgG-HRP secondary antibody at a dilution of 1:2500 dilution at RT for 1 hour. The signal is developed using an Fluorescence. A specific band was detected for MTHFD2 at approximately 40 kDa. The expected band size for MTHFD2 is at 40 kDa.

Submit a product review to Biocompare.com

Submit a review of this product to Biocompare.com to receive a \$20 Amazon.com giftcard! Your reviews help your fellow scientists make the right decisions. Thank you for your contribution.



Anti-MTHFD2 Antibody (C-term)

For Research Use Only. Not for use in diagnostic procedures.