

## Anti-Cerberus CER1 Monoclonal Antibody

Catalog Number: M06475

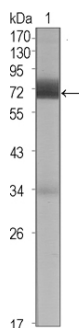
### Overview

Product Name	Anti-Cerberus CER1 Monoclonal Antibody
Reactive Species	Human
Description	Boster Bio Anti-Cerberus CER1 Monoclonal Antibody catalog # M06475. Tested in ELISA, IHC, WB applications. This antibody reacts with Human.
Application	ELISA, IF, IHC, WB
Clonality	Monoclonal 9D6
Formulation	Ascitic fluid containing 0.03% sodium azide.
Storage Instructions	Store at -20°C for one year. For short term storage and frequent use, store at 4°C for up to one month. Avoid repeated freeze-thaw cycles.
Host	Mouse
Uniprot ID	O95813

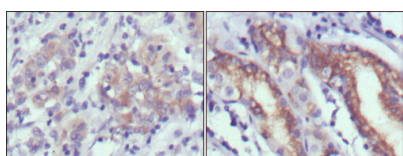
### Technical Details

Immunogen	Purified recombinant fragment of human Cerberus expressed in E. Coli.
Isotype	IgG
Form	Liquid
Concentration	1 mg/ml
Purification	Affinity purification
Suggested Dilutions	WB 1:500-1:2000 IHC 1:200-1:1000 ELISA 1:10000 IF 1:50-200

## Anti-Cerberus CER1 Monoclonal Antibody (M06475) Images



Western Blot analysis using Cerberus Monoclonal Antibody against CER1 (aa18-267)-hlgGfc transfected HEK2993 cell lysate (1).



Immunohistochemistry analysis of paraffin-embedded human gastric cancer (left) and normal gastric tissues (right) with DAB staining using Cerberus Monoclonal Antibody.

### Submit a product review to [Biocompare.com](https://www.biocompare.com)

Submit a review of this product to [Biocompare.com](https://www.biocompare.com) to receive a \$20 Amazon.com giftcard! Your reviews help your fellow scientists make the right decisions. Thank you for your contribution.



Anti-Cerberus CER1 Monoclonal Antibody

For Research Use Only. Not for use in diagnostic procedures.