

## Anti-TXNL2 (GLRX3) Mouse Monoclonal Antibody [Clone ID: OTI2B10]

Catalog Number: M06489

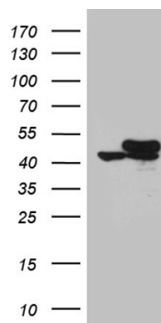
### Overview

Product Name	Anti-TXNL2 (GLRX3) Mouse Monoclonal Antibody [Clone ID: OTI2B10]
Reactive Species	Human, Mouse, Rat
Description	Boster Bio GLRX3 mouse monoclonal antibody, clone OTI2B10. Catalog# M06489. Tested in WB. This antibody reacts with Human, Mouse, Rat.
Application	WB
Clonality	Monoclonal OTI2B10
Formulation	PBS (pH 7.3) containing 1% stabilizing protein, 50% glycerol and 0.02% sodium azide. This antibody is supplied in a stabilized formulation. Compatibility with conjugation reactions depends on the chemistry of the conjugation method used. For conjugation methods that are not compatible with the stabilizing components present in this formulation, a carrier-free antibody format is required.
Storage Instructions	Store at -20°C as received.
Host	Mouse
Uniprot ID	O76003

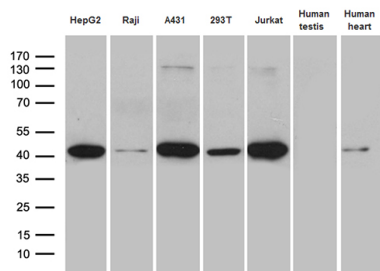
### Technical Details

Immunogen	Full length human recombinant protein of human GLRX3 (NP_006532) produced in HEK293T cell.
Isotype	IgG2a
Concentration	1 mg/ml
Purification	Purified from mouse ascites fluids or tissue culture supernatant by affinity chromatography (protein A/G)
Suggested Dilutions	WB 1:500~2000

## Anti-TXNL2 (GLRX3) Mouse Monoclonal Antibody [Clone ID: OTI2B10] (M06489) Images



HEK293T cells were transfected with the pCMV6-ENTRY control (Left lane) or pCMV6-ENTRY GLRX3 (Right lane) cDNA for 48 hrs and lysed. Equivalent amounts of cell lysates (5 ug per lane) were separated by SDS-PAGE and immunoblotted with anti-GLRX3.



Western blot analysis of extracts (35ug) from 5 cell lines and 2 tissue lysates by using anti-GLRX3 monoclonal antibody (1:500).

### Submit a product review to Biocompare.com

Submit a review of this product to Biocompare.com to receive a \$20 Amazon.com giftcard! Your reviews help your fellow scientists make the right decisions. Thank you for your contribution.



Anti-TXNL2 (GLRX3) Mouse Monoclonal Antibody [Clone ID: OTI2B10]

For Research Use Only. Not for use in diagnostic procedures.