

Anti-SOAT 2 (SOAT2) Mouse Monoclonal Antibody [Clone ID: OTI2D3]

Catalog Number: M06490

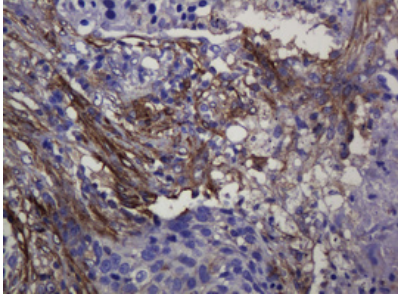
Overview

Product Name	Anti-SOAT 2 (SOAT2) Mouse Monoclonal Antibody [Clone ID: OTI2D3]
Reactive Species	Human
Description	Boster Bio SOAT2 mouse monoclonal antibody, clone OTI2D3. Catalog# M06490. Tested in IHC. This antibody reacts with Human.
Application	IHC
Clonality	Monoclonal OTI2D3
Formulation	PBS (pH 7.3) containing 1% stabilizing protein, 50% glycerol and 0.02% sodium azide. This antibody is supplied in a stabilized formulation. Compatibility with conjugation reactions depends on the chemistry of the conjugation method used. For conjugation methods that are not compatible with the stabilizing components present in this formulation, a carrier-free antibody format is required.
Storage Instructions	Store at -20°C as received.
Host	Mouse
Uniprot ID	O75908

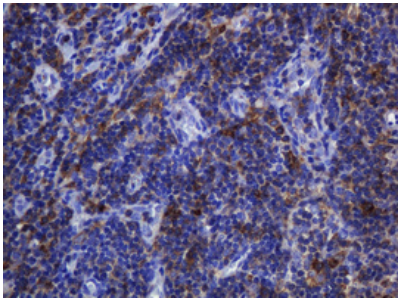
Technical Details

Immunogen	Human recombinant protein fragment corresponding to amino acids 1-120 of human SOAT2 (NP_003569) produced in E.coli.
Isotype	IgG1
Concentration	1 mg/ml
Purification	Purified from mouse ascites fluids or tissue culture supernatant by affinity chromatography (protein A/G)
Suggested Dilutions	IHC 1:150

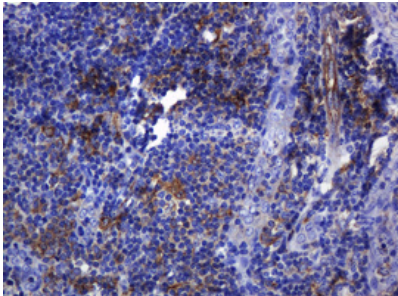
Anti-SOAT 2 (SOAT2) Mouse Monoclonal Antibody [Clone ID: OTI2D3] (M06490) Images



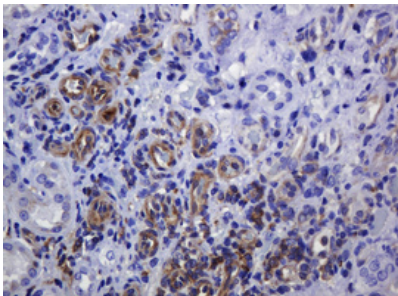
Immunohistochemical staining of paraffin-embedded Carcinoma of Human lung tissue using anti-SOAT2 mouse monoclonal antibody. (Heat-induced epitope retrieval by 10mM citric buffer)



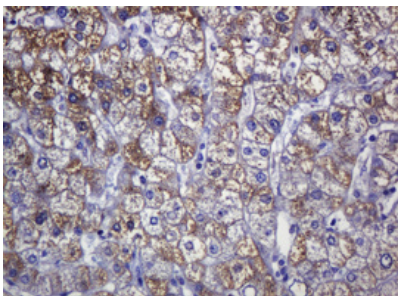
Immunohistochemical staining of paraffin-embedded Human lymph node tissue within the normal limits using anti-SOAT2 mouse monoclonal antibody. (Heat-induced epitope retrieval by 10mM citric buffer)



Immunohistochemical staining of paraffin-embedded Human tonsil within the normal limits using anti-SOAT2 mouse monoclonal antibody. (Heat-induced epitope retrieval by 10mM citric buffer)



Immunohistochemical staining of paraffin-embedded Adenocarcinoma of Human colon tissue using anti-SOAT2 mouse monoclonal antibody. (Heat-induced epitope retrieval by 10mM citric buffer)



Immunohistochemical staining of paraffin-embedded Human liver tissue within the normal limits using anti-SOAT2 mouse monoclonal antibody. (Heat-induced epitope retrieval by 10mM citric buffer)

Submit a product review to Biocompare.com

Submit a review of this product to Biocompare.com to receive a \$20 Amazon.com giftcard! Your reviews help your fellow scientists make the right decisions. Thank you for your contribution.



Anti-SOAT 2 (SOAT2) Mouse Monoclonal Antibody [Clone ID: OTI2D3]

For Research Use Only. Not for use in diagnostic procedures.