

Anti-HAND1 Mouse Monoclonal Antibody [Clone ID: OTI1G10]

Catalog Number: M06496-1

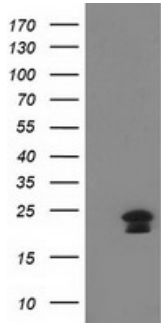
Overview

Product Name	Anti-HAND1 Mouse Monoclonal Antibody [Clone ID: OTI1G10]
Reactive Species	Human, Mouse, Rat
Description	Boster Bio HAND1 mouse monoclonal antibody, clone OTI1G10 (formerly 1G10). Catalog# M06496-1. Tested in FC, IF, WB. This antibody reacts with Human, Mouse, Rat.
Application	Flow Cytometry, IF, WB
Clonality	Monoclonal OTI1G10
Formulation	PBS (pH 7.3) containing 1% stabilizing protein, 50% glycerol and 0.02% sodium azide. This antibody is supplied in a stabilized formulation. Compatibility with conjugation reactions depends on the chemistry of the conjugation method used. For conjugation methods that are not compatible with the stabilizing components present in this formulation, a carrier-free antibody format is required.
Storage Instructions	Store at -20°C as received.
Host	Mouse
Uniprot ID	O96004

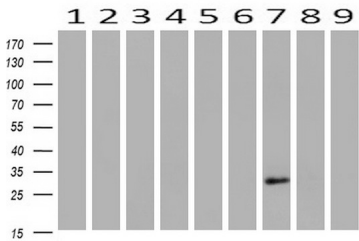
Technical Details

Immunogen	Full length human recombinant protein of human HAND1 (NP_004812) produced in E.coli.
Isotype	IgG2b
Concentration	0.82 mg/ml
Purification	Purified from mouse ascites fluids or tissue culture supernatant by affinity chromatography (protein A/G)
Suggested Dilutions	WB 1:500 IF 1:100 Flow Cytometry 1:100

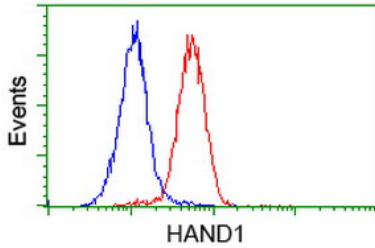
Anti-HAND1 Mouse Monoclonal Antibody [Clone ID: OTI1G10] (M06496-1) Images



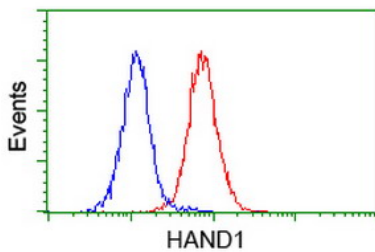
HEK293T cells were transfected with the pCMV6-ENTRY control (Left lane) or pCMV6-ENTRY HAND1 (Right lane) cDNA for 48 hrs and lysed. Equivalent amounts of cell lysates (5 ug per lane) were separated by SDS-PAGE and immunoblotted with anti-HAND1.



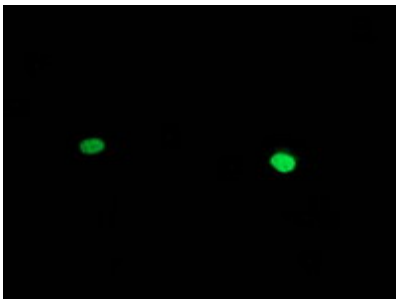
Western blot analysis of extracts (10ug) from 9 Human tissue by using anti-HAND1 monoclonal antibody at 1:200 (1: Testis; 2: Omentum; 3: Uterus; 4: Breast; 5: Brain; 6: Liver; 7: Ovary; 8: Thyroid gland; 9: colon).



Flow cytometric Analysis of HeLa cells



Flow cytometric Analysis of Jurkat cells



Anti-HAND1 mouse monoclonal antibody (M06496-1) immunofluorescent staining of COS7 cells transiently transfected by pCMV6-ENTRY HAND1.

Submit a review of this product to Biocompare.com to receive a \$20 Amazon.com giftcard! Your reviews help your fellow scientists make the right decisions. Thank you for your contribution.



Anti-HAND1 Mouse Monoclonal Antibody [Clone ID: OTI1G10]

For Research Use Only. Not for use in diagnostic procedures.