

Anti-Growth Arrest Specific Protein 7 (GAS7) Mouse Monoclonal Antibody [Clone ID: OTI8H10]

Catalog Number: M06548

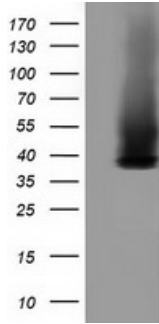
Overview

Product Name	Anti-Growth Arrest Specific Protein 7 (GAS7) Mouse Monoclonal Antibody [Clone ID: OTI8H10]
Reactive Species	Human, Mouse, Rat
Description	Boster Bio GAS7 (Growth Arrest Specific Protein 7) mouse monoclonal antibody, clone OTI8H10 (formerly 8H10). Catalog# M06548. Tested in FC, IF, IHC, WB. This antibody reacts with Human, Mouse, Rat.
Application	Flow Cytometry, IF, IHC, WB
Clonality	Monoclonal OTI8H10
Formulation	PBS (PH 7.3) containing 1% BSA, 50% glycerol and 0.02% sodium azide.
Storage Instructions	Store at -20°C as received.
Host	Mouse
Uniprot ID	O60861

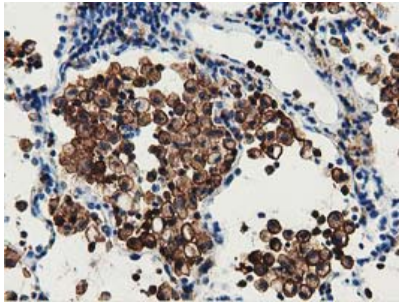
Technical Details

Immunogen	Full length human recombinant protein of human GAS7 (NP_003635) produced in HEK293T cell.
Isotype	IgG2a
Concentration	0.7 mg/ml
Purification	Purified from mouse ascites fluids or tissue culture supernatant by affinity chromatography (protein A/G)
Suggested Dilutions	Dilute the sample so that the expected range of concentrations fall within the detection range of this kit. If the expected range of concentration is unknown, a pilot test should be conducted to decide the optimal dilution ratio for your samples. Some PubMed article(s) citing the expression level of this target are as follows:

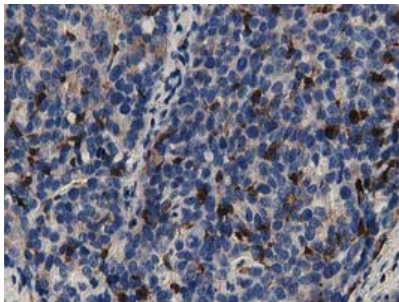
Anti-Growth Arrest Specific Protein 7 (GAS7) Mouse Monoclonal Antibody [Clone ID: OTI8H10] (M06548) Images



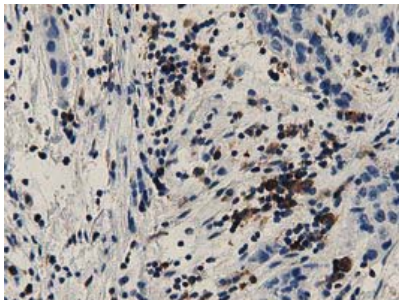
HEK293T cells were transfected with the pCMV6-ENTRY control (Left lane) or pCMV6-ENTRY GAS7 (Right lane) cDNA for 48 hrs and lysed. Equivalent amounts of cell lysates (5 ug per lane) were separated by SDS-PAGE and immunoblotted with anti-GAS7.



Immunohistochemical staining of paraffin-embedded Carcinoma of Human lung tissue using anti-GAS7 mouse monoclonal antibody at 1:150 (M06548)

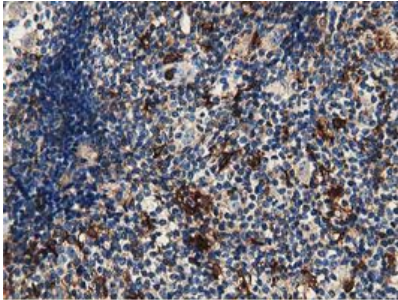
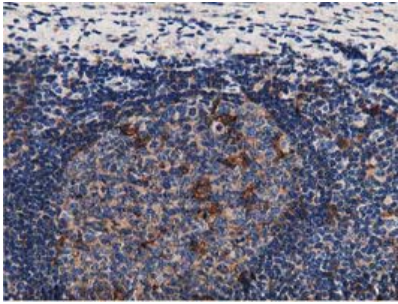


Immunohistochemical staining of paraffin-embedded Adenocarcinoma of Human ovary tissue using anti-GAS7 mouse monoclonal antibody at 1:150 (M06548)

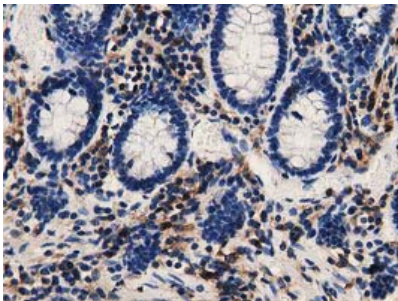


Immunohistochemical staining of paraffin-embedded Carcinoma of Human bladder tissue using anti-GAS7 mouse monoclonal antibody at 1:150 (M06548)

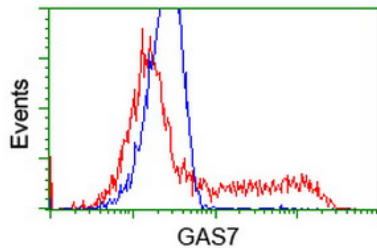
Immunohistochemical staining of paraffin-embedded Human lymph node tissue within the normal limits using anti-GAS7 mouse monoclonal antibody at 1:150 (M06548)



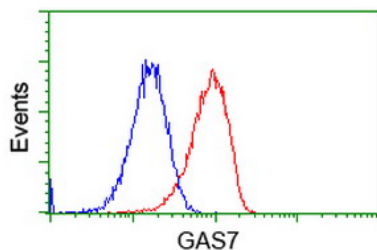
Immunohistochemical staining of paraffin-embedded Human lymphoma tissue using anti-GAS7 mouse monoclonal antibody at 1:150 (M06548)



Immunohistochemical staining of paraffin-embedded Human colon tissue within the normal limits using anti-GAS7 mouse monoclonal antibody at 1:150 (M06548)

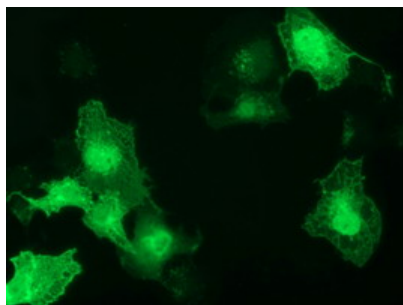
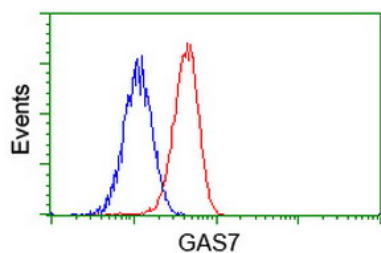


HEK293T cells transfected with either GAS7 (Myc-DDK-tagged) overexpress plasmid (Red) or empty vector control plasmid (Blue) were immunostained by anti-GAS7 antibody (M06548)



Flow cytometric Analysis of Hela cells

Flow cytometric Analysis of Jurkat cells



Anti-GAS7 mouse monoclonal antibody (M06548)
immunofluorescent staining of COS7 cells transiently
transfected by pCMV6-ENTRY GAS7.

Submit a product review to Biocompare.com

Submit a review of this product to Biocompare.com to receive a \$20 Amazon.com giftcard! Your reviews help your fellow scientists make the right decisions. Thank you for your contribution.



Anti-Growth Arrest Specific Protein 7 (GAS7) Mouse Monoclonal Antibody [Clone ID: OTI8H10]