

Anti-LEFTY2 Antibody

Catalog Number: M06558-1

About LEFTY2

Required for left-right (L-R) asymmetry determination of organ systems in mammals. May play a role in endometrial bleeding.

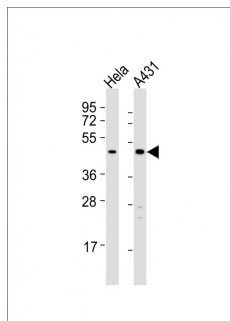
Overview

Product Name	Anti-LEFTY2 Antibody
Reactive Species	Human
Description	Boster Bio Anti-LEFTY2 Antibody (Catalog # M06558-1). Tested in WB application(s). This antibody reacts with Human.
Application	WB
Clonality	Polyclonal
Formulation	Purified polyclonal antibody supplied in PBS with 0.09% (W/V) sodium azide.
Storage Instructions	Maintain refrigerated at 2-8°C for up to 2 weeks. For long-term storage, store at -20°C in small aliquots to prevent freeze-thaw cycles.
Host	Rabbit
Uniprot ID	O00292

Technical Details

Immunogen	This LEFTY2 antibody is generated from a rabbit immunized with a recombinant.
Predicted Reactive Species	Mouse
Isotype	Rabbit IgG
Purification	This antibody is purified through a protein A column, followed by peptide affinity purification.
Suggested Dilutions	WB: 1:8000

Anti-LEFTY2 Antibody (M06558-1) Images



All lanes : Anti-LEFTY2 Antibody at 1:8000 dilution
Lane 1: Hela whole cell lysates
Lane 2: A431 whole cell lysates
Lysates/proteins at 20 µg per lane. Secondary Goat Anti-Rabbit IgG, (H+L), Peroxidase conjugated at 1/10000 dilution
Predicted band size : 41 kDa
Blocking/Dilution buffer: 5% NFDM/TBST.

Submit a product review to Biocompare.com

Submit a review of this product to Biocompare.com to receive a \$20 Amazon.com giftcard! Your reviews help your fellow scientists make the right decisions. Thank you for your contribution.



Anti-LEFTY2 Antibody

For Research Use Only. Not for use in diagnostic procedures.