

Anti-Syntaxin 6 Stx6 Antibody (Monoclonal, 3D10)

Catalog Number: M06586

About Stx6

Heat shock protein 47, also known as SERPINH1 or HSP47, is a serpin which serves as a human chaperone protein for collagen. This protein is a member of the serpin superfamily of serine proteinase inhibitors. Its expression is induced by heat shock. The protein localizes to the endoplasmic reticulum lumen and binds collagen; thus it is thought to be a molecular chaperone involved in the maturation of collagen molecules. Autoantibodies to this protein have been found in patients with rheumatoid arthritis. It has been found that HSP47 monitors the integrity of the triple helix of type I procollagen at the ER/cis-Golgi boundary and, when absent, the rate of transit from the ER to the Golgi is increased and the helical structure is compromised.

Overview

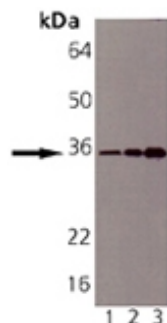
Product Name	Anti-Syntaxin 6 Stx6 Antibody (Monoclonal, 3D10)
Reactive Species	Human, Mouse, Rat
Description	Boster Bio Anti-Syntaxin 6 Stx6 Antibody (Monoclonal, 3D10) catalog # M06586. Tested in IP, WB applications. This antibody reacts with Human, Mouse, Rat.
Application	IP, WB
Clonality	Monoclonal 3D10
Formulation	Each vial contains 50% glycerol and 0.09% sodium azide.
Storage Instructions	Store at -20°C for one year. For short term storage and frequent use, store at 4°C for up to one month. Avoid repeated freeze-thaw cycles.
Host	Mouse
Uniprot ID	Q63635

Technical Details

Immunogen	Recombinant rat Syntaxin 6.
Predicted Reactive Species	Bovine, Goat, Guinea Pig, Hamster, Monkey, Sheep
Cross Reactivity	Detects ~20kDa. Does not cross-react with alphaB-crystallin, betaL-crystallin, ̢H- crystallin, gamma-crystallin, HSP25, HSP27 or HSP47 proteins.
Isotype	IgG1
Form	Liquid
Concentration	0.5-1mg/ml, actual concentration vary by lot. Use suggested dilution ratio to decide dilution procedure.

Purification	Protein G affinity purified.
Suggested Dilutions	<p>Dilute the sample so that the expected range of concentrations fall within the detection range of this kit.</p> <p>If the expected range of concentration is unknown, a pilot test should be conducted to decide the optimal dilution ratio for your samples.</p> <p>Some PubMed article(s) citing the expression level of this target are as follows:</p> <p>Boster Bio's internal QC testing used:</p> <p>WB, 1:1,000, ECL, Human, Mouse, Rat</p> <p>IP, 12ug/ml, Human, Mouse, Rat</p>

Anti-Syntaxin 6 Stx6 Antibody (Monoclonal, 3D10) (M06586) Images



Western blot analysis of Syntaxin 6 expression in CHO-K1 whole cell lysates (lane 1), mouse brain extract (lane 2) and rat brain extract (lane 3). Syntaxin 6 at 35KD was detected using mouse anti-Syntaxin 6 Antigen Affinity purified monoclonal antibody (Catalog # M06586) at 1:1000. The blot was developed using chemiluminescence (ECL) method (Catalog # EK1001).

Submit a product review to Biocompare.com

Submit a review of this product to Biocompare.com to receive a \$20 Amazon.com giftcard! Your reviews help your fellow scientists make the right decisions. Thank you for your contribution.



Anti-Syntaxin 6 Stx6 Antibody (Monoclonal, 3D10)