

## Anti-CHCHD3 Mouse Monoclonal Antibody [Clone ID: OTI7G4]

Catalog Number: M06593

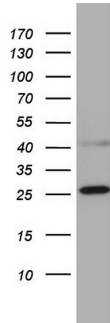
### Overview

Product Name	Anti-CHCHD3 Mouse Monoclonal Antibody [Clone ID: OTI7G4]
Reactive Species	Human, Mouse, Rat
Description	Boster Bio CHCHD3 mouse monoclonal antibody, clone OTI7G4 (formerly 7G4). Catalog# M06593. Tested in IHC, WB. This antibody reacts with Human, Mouse, Rat.
Application	IHC, WB
Clonality	Monoclonal OTI7G4
Formulation	PBS (pH 7.3) containing 1% stabilizing protein, 50% glycerol and 0.02% sodium azide. This antibody is supplied in a stabilized formulation. Compatibility with conjugation reactions depends on the chemistry of the conjugation method used. For conjugation methods that are not compatible with the stabilizing components present in this formulation, a carrier-free antibody format is required.
Storage Instructions	Store at -20°C as received.
Host	Mouse
Uniprot ID	Q9NX63

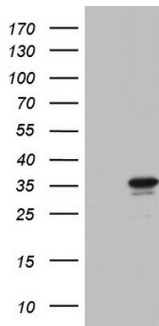
### Technical Details

Immunogen	Human recombinant protein fragment corresponding to amino acids 2-227 of human CHCHD3 (NP_060282) produced in E.coli.
Isotype	IgG1
Concentration	1 mg/ml
Purification	Purified from mouse ascites fluids or tissue culture supernatant by affinity chromatography (protein A/G)
Suggested Dilutions	WB 1:2000

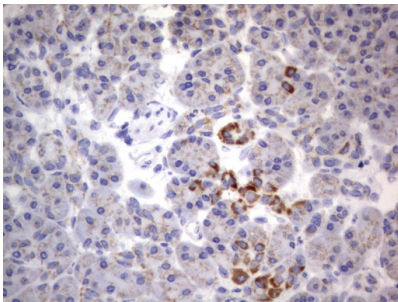
## Anti-CHCHD3 Mouse Monoclonal Antibody [Clone ID: OTI7G4] (M06593) Images



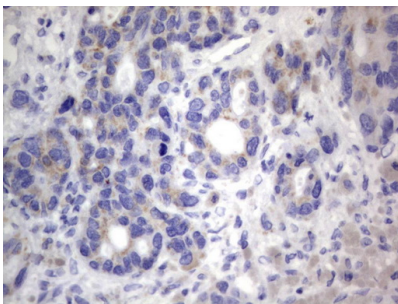
Western blot analysis of A549 cell lysate (35ug) by using anti-CHCHD3 monoclonal antibody. Dilution: 1:500



HEK293T cells were transfected with the pCMV6-ENTRY control (Left lane) or pCMV6-ENTRY CHCHD3 (Right lane) cDNA for 48 hrs and lysed. Equivalent amounts of cell lysates (5 ug per lane) were separated by SDS-PAGE and immunoblotted with anti-CHCHD3.

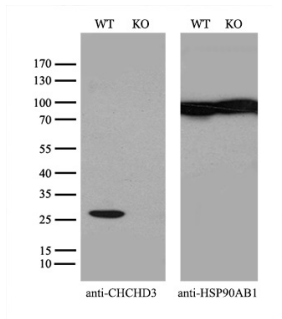
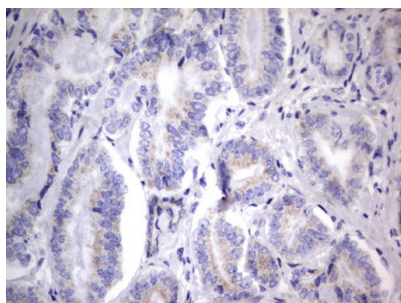


Immunohistochemical staining of paraffin-embedded Human pancreas tissue within the normal limits using anti-CHCHD3 mouse monoclonal antibody. (M06593) Dilution: 1:150



Immunohistochemical staining of paraffin-embedded Carcinoma of Human pancreas tissue using anti-CHCHD3 mouse monoclonal antibody. (M06593) Dilution: 1:150

Immunohistochemical staining of paraffin-embedded Human prostate tissue within the normal limits using anti-CHCHD3 mouse monoclonal antibody. (M06593) Dilution: 1:150



Equivalent amounts of cell lysates (10 ug per lane) of wild-type 293T cells (WT) and CHCHD3-Knockout 293T cells (KO) were separated by SDS-PAGE and immunoblotted with anti-CHCHD3 monoclonal antibody M06593

## Submit a product review to [Biocompare.com](https://www.biocompare.com)

Submit a review of this product to [Biocompare.com](https://www.biocompare.com) to receive a \$20 Amazon.com giftcard! Your reviews help your fellow scientists make the right decisions. Thank you for your contribution.



Anti-CHCHD3 Mouse Monoclonal Antibody [Clone ID: OTI7G4]

For Research Use Only. Not for use in diagnostic procedures.