

Anti-CLEC1B Antibody (N-Term)

Catalog Number: M06619

About CLEC1B

Protein transport. Probably involved in vesicular traffic (By similarity).

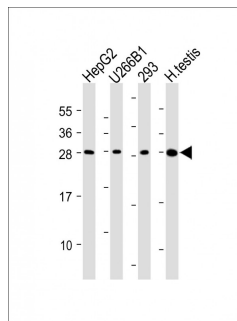
Overview

Product Name	Anti-CLEC1B Antibody (N-Term)
Reactive Species	Human
Description	Boster Bio Anti-CLEC1B Antibody (N-Term) (Catalog # M06619). Tested in WB application(s). This antibody reacts with Human.
Application	WB
Clonality	Polyclonal
Formulation	Purified polyclonal antibody supplied in PBS with 0.09% (W/V) sodium azide.
Storage Instructions	Maintain refrigerated at 2-8°C for up to 2 weeks. For long-term storage, store at -20°C in small aliquots to prevent freeze-thaw cycles.
Host	Rabbit
Uniprot ID	Q9P126

Technical Details

Immunogen	This CLEC1B antibody is generated from a rabbit immunized with a KLH conjugated synthetic peptide between 44-78 amino acids from the human region of human CLEC1B.
Predicted Reactive Species	Mouse
Isotype	Rabbit IgG
Purification	This antibody is purified through a protein A column, followed by peptide affinity purification.
Suggested Dilutions	WB: 1:2000

Anti-CLEC1B Antibody (N-Term) (M06619) Images



All lanes : Anti-CLEC1B Antibody (N-Term) at dilution
Lane 1: HepG2 whole cell lysate
Lane 2: U266B1 whole cell lysate
Lane 3: 293 whole cell lysate
Lane 4: Human testis lysate
Lysates/proteins at 20 µg per lane. Secondary Goat Anti-Rabbit IgG, (H+L), Peroxidase conjugated at 1/10000 dilution. Predicted band size : 27kDa
Blocking/Dilution buffer: 5% NFDm/TBST.

Submit a product review to Biocompare.com

Submit a review of this product to Biocompare.com to receive a \$20 Amazon.com giftcard! Your reviews help your fellow scientists make the right decisions. Thank you for your contribution.



Anti-CLEC1B Antibody (N-Term)

For Research Use Only. Not for use in diagnostic procedures.