

Anti-SLC2A8 Antibody (Center)

Catalog Number: M06641

About SLC2A8

Insulin-regulated facilitative glucose transporter. Binds cytochalasin B in a glucose-inhibitable manner. Seems to be a dual-specific sugar transporter as it is inhibitable by fructose (By similarity).

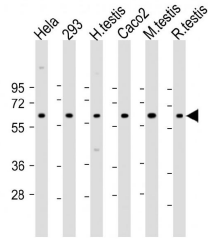
Overview

Product Name	Anti-SLC2A8 Antibody (Center)
Reactive Species	Human, Mouse, Rat
Description	Boster Bio Anti-SLC2A8 Antibody (Center) (Catalog # M06641). Tested in WB, IHC-P, Flow Cytometry application(s). This antibody reacts with Human, Mouse, Rat.
Application	Flow Cytometry, IHC-P, WB
Clonality	Polyclonal
Formulation	Purified polyclonal antibody supplied in PBS with 0.09% (W/V) sodium azide.
Storage Instructions	Maintain refrigerated at 2-8°C for up to 2 weeks. For long-term storage, store at -20°C in small aliquots to prevent freeze-thaw cycles.
Host	Rabbit
Uniprot ID	Q9NY64

Technical Details

Immunogen	This SLC2A8 antibody is generated from a rabbit immunized with a KLH conjugated synthetic peptide between 260-292 amino acids from the Central region of human SLC2A8.
Predicted Reactive Species	Bovine
Isotype	Rabbit IgG
Purification	This antibody is purified through a protein A column, followed by peptide affinity purification.
Suggested Dilutions	Dilute the sample so that the expected range of concentrations fall within the detection range of this kit. If the expected range of concentration is unknown, a pilot test should be conducted to decide the optimal dilution ratio for your samples. Some PubMed article(s) citing the expression level of this target are as follows: Boster Bio's internal QC testing used: WB: 1:2000 IHC-P: 1:25 FC: 1:25

Anti-SLC2A8 Antibody (Center) (M06641) Images



All lanes : Anti-SLC2A8 Antibody (Center) at 1:2000 dilution

Lane 1: HeLa whole cell lysate

Lane 2: 293 whole cell lysate

Lane 3: human testis lysate

Lane 4: Caco2 whole cell lysate

Lane 5: mouse testis lysate

Lane 6: rat testis lysate

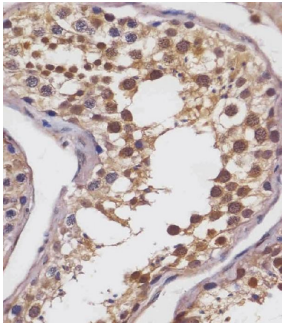
Lysates/proteins at 20 µg per lane.

Secondary

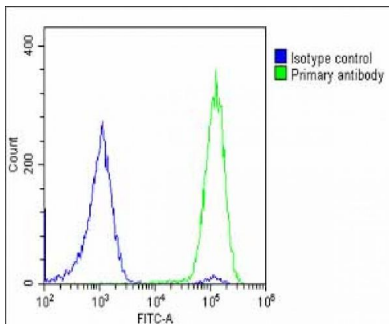
Goat Anti-Rabbit IgG, (H+L), Peroxidase conjugated at 1/10000 dilution.

Predicted band size : 51 kDa

Blocking/Dilution buffer: 5% NFDM/TBST.



M06641 staining SLC2A8 in human testis tissue sections by Immunohistochemistry (IHC-P -paraformaldehyde-fixed, paraffin-embedded sections). Tissue was fixed with formaldehyde and blocked with 3% BSA for 0.5 hour at room temperature; antigen retrieval was by heat mediation with a citrate buffer (pH6). Samples were incubated with primary antibody (1/25) for 1 hours at 37°C. A undiluted biotinylated goat polyvalent antibody was used as the secondary antibody.



Overlay histogram showing U-2 OS cells stained with M06641 (green line). The cells were fixed with 2% paraformaldehyde (10 min) and then permeabilized with 90% methanol for 10 min. The cells were then incubated in 2% bovine serum albumin to block non-specific protein-protein interactions followed by the antibody (M06641, 1:25 dilution) for 60 min at 37°C. The secondary antibody used was Goat-Anti-Rabbit IgG, DyLight® 488 Conjugated Highly Cross-Adsorbed at 1/200 dilution for 40 min at 37°C. Isotype control antibody (blue line) was rabbit IgG1 (1g/1x10⁶ cells) used under the same conditions. Acquisition of >10,000 events was performed.

Submit a product review to Biocompare.com

Submit a review of this product to Biocompare.com to receive a \$20 Amazon.com giftcard! Your reviews help your fellow scientists make the right decisions. Thank you for your contribution.



Anti-SLC2A8 Antibody (Center)