

## Anti-PSMD2 Mouse Monoclonal Antibody [Clone ID: OT11G6]

Catalog Number: M06642

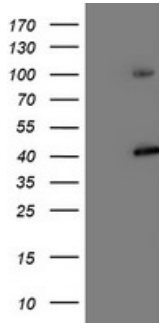
### Overview

Product Name	Anti-PSMD2 Mouse Monoclonal Antibody [Clone ID: OT11G6]
Reactive Species	Dog, Human, Monkey, Mouse, Rat
Description	Boster Bio PSMD2 (Proteasome 26S S2) mouse monoclonal antibody, clone OT11G6 (formerly 1G6). Catalog# M06642. Tested in IF, IHC, WB. This antibody reacts with Human, Monkey, Mouse, Rat, Dog.
Application	IF, IHC, WB
Clonality	Monoclonal OT11G6
Formulation	PBS (pH 7.3) containing 1% stabilizing protein, 50% glycerol and 0.02% sodium azide. This antibody is supplied in a stabilized formulation. Compatibility with conjugation reactions depends on the chemistry of the conjugation method used. For conjugation methods that are not compatible with the stabilizing components present in this formulation, a carrier-free antibody format is required.
Storage Instructions	Store at -20°C as received.
Host	Mouse
Uniprot ID	Q13200

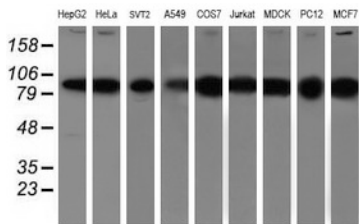
### Technical Details

Immunogen	Full length human recombinant protein of human PSMD2 (NP_002799) produced in HEK293T cell.
Isotype	IgG2a
Concentration	0.7 mg/ml
Purification	Purified from mouse ascites fluids or tissue culture supernatant by affinity chromatography (protein A/G)
Suggested Dilutions	WB 1:500~2000 IHC 1:150 IF 1:100

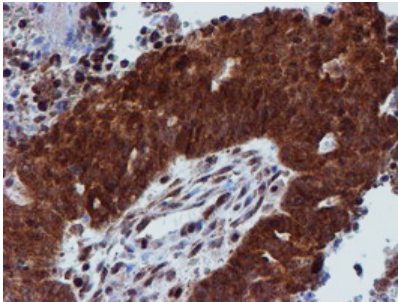
## Anti-PSMD2 Mouse Monoclonal Antibody [Clone ID: OTI1G6] (M06642) Images



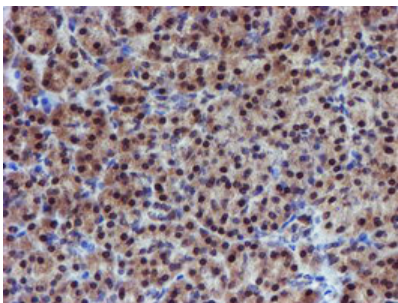
HEK293T cells were transfected with the pCMV6-ENTRY control (Left lane) or pCMV6-ENTRY PSMD2 (Right lane) cDNA for 48 hrs and lysed. Equivalent amounts of cell lysates (5 ug per lane) were separated by SDS-PAGE and immunoblotted with anti-PSMD2.



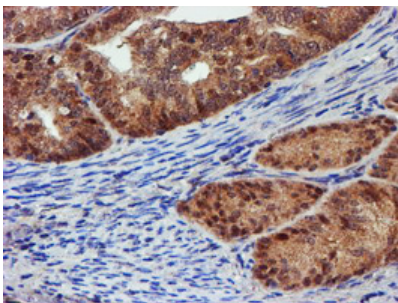
Western blot analysis of extracts (35ug) from 9 different cell lines by using anti-PSMD2 monoclonal antibody.



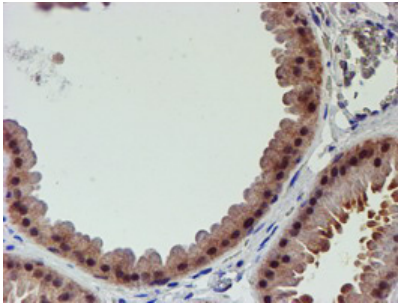
Immunohistochemical staining of paraffin-embedded Adenocarcinoma of Human ovary tissue using anti-PSMD2 mouse monoclonal antibody. (Heat-induced epitope retrieval by 10mM citric buffer)



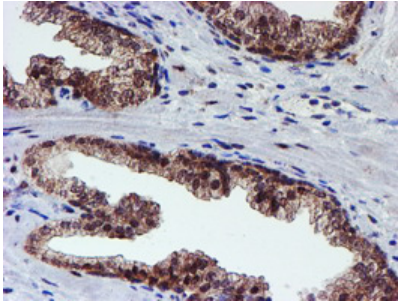
Immunohistochemical staining of paraffin-embedded Human pancreas tissue within the normal limits using anti-PSMD2 mouse monoclonal antibody. (Heat-induced epitope retrieval by 10mM citric buffer)



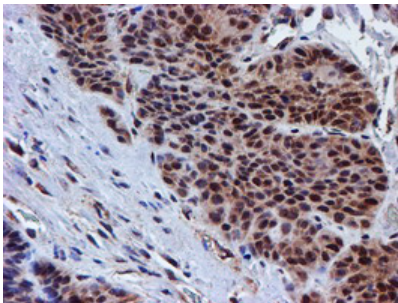
Immunohistochemical staining of paraffin-embedded Adenocarcinoma of Human endometrium tissue using anti-PSMD2 mouse monoclonal antibody. (Heat-induced epitope retrieval by 10mM citric buffer)



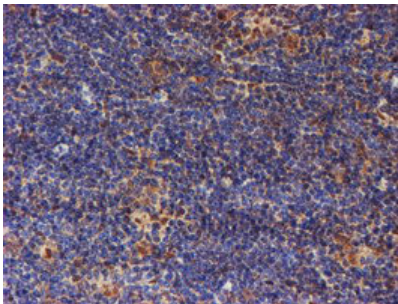
Immunohistochemical staining of paraffin-embedded Human breast tissue within the normal limits using anti-PSMD2 mouse monoclonal antibody. (Heat-induced epitope retrieval by 10mM citric buffer)



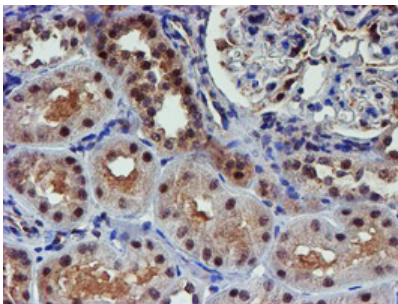
Immunohistochemical staining of paraffin-embedded Carcinoma of Human prostate tissue using anti-PSMD2 mouse monoclonal antibody. (Heat-induced epitope retrieval by 10mM citric buffer)



Immunohistochemical staining of paraffin-embedded Carcinoma of Human bladder tissue using anti-PSMD2 mouse monoclonal antibody. (Heat-induced epitope retrieval by 10mM citric buffer)

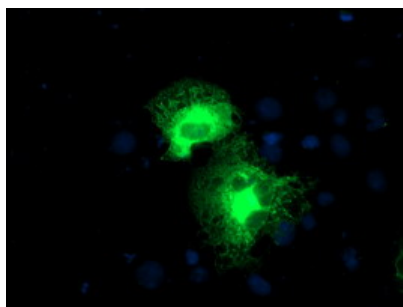


Immunohistochemical staining of paraffin-embedded Human lymphoma tissue using anti-PSMD2 mouse monoclonal antibody. (Heat-induced epitope retrieval by 10mM citric buffer)



Immunohistochemical staining of paraffin-embedded Human Kidney tissue within the normal limits using anti-PSMD2 mouse monoclonal antibody. (Heat-induced epitope retrieval by 10mM citric buffer)

Anti-PSMD2 mouse monoclonal antibody (M06642)  
immunofluorescent staining of COS7 cells transiently



transfected by pCMV6-ENTRY PSMD2.

## Submit a product review to Biocompare.com

Submit a review of this product to Biocompare.com to receive a \$20 Amazon.com giftcard! Your reviews help your fellow scientists make the right decisions. Thank you for your contribution.



Anti-PSMD2 Mouse Monoclonal Antibody [Clone ID: OT11G6]

For Research Use Only. Not for use in diagnostic procedures.