

## Anti-Desmuslin (SYNM) Mouse Monoclonal Antibody [Clone ID: OTI7H6]

Catalog Number: M06653

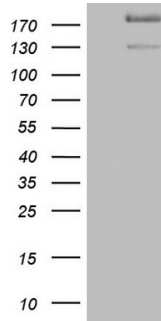
### Overview

Product Name	Anti-Desmuslin (SYNM) Mouse Monoclonal Antibody [Clone ID: OTI7H6]
Reactive Species	Human
Description	Boster Bio SYNM mouse monoclonal antibody, clone OTI7H6 (formerly 7H6). Catalog# M06653. Tested in IHC, WB. This antibody reacts with Human.
Application	IHC, WB
Clonality	Monoclonal OTI7H6
Formulation	PBS (pH 7.3) containing 1% stabilizing protein, 50% glycerol and 0.02% sodium azide. This antibody is supplied in a stabilized formulation. Compatibility with conjugation reactions depends on the chemistry of the conjugation method used. For conjugation methods that are not compatible with the stabilizing components present in this formulation, a carrier-free antibody format is required.
Storage Instructions	Store at -20°C as received.
Host	Mouse
Uniprot ID	O15061

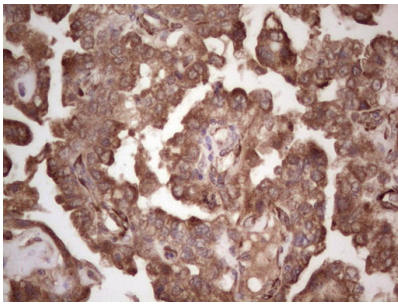
### Technical Details

Immunogen	Human recombinant protein fragment corresponding to amino acids 329-580 of human SYNM (NP_663780) produced in E.coli.
Isotype	IgG1
Concentration	1 mg/ml
Purification	Purified from mouse ascites fluids or tissue culture supernatant by affinity chromatography (protein A/G)
Suggested Dilutions	WB 1:2000 IHC 1:150

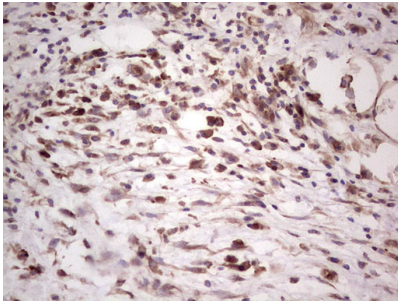
## Anti-Desmuslin (SYNM) Mouse Monoclonal Antibody [Clone ID: OTI7H6] (M06653) Images



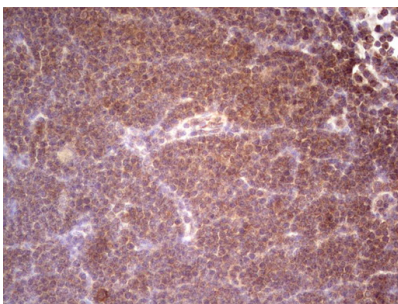
HEK293T cells were transfected with the pCMV6-ENTRY control (Left lane) or pCMV6-ENTRY SYNM (Right lane) cDNA for 48 hrs and lysed. Equivalent amounts of cell lysates (5 ug per lane) were separated by SDS-PAGE and immunoblotted with anti-SYNM.



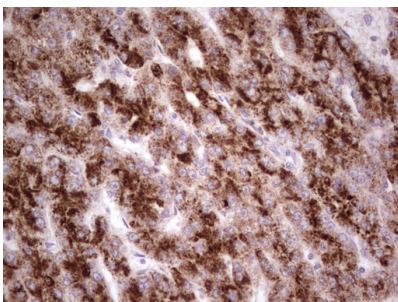
Immunohistochemical staining of paraffin-embedded Adenocarcinoma of Human ovary tissue using anti-SYNM mouse monoclonal antibody. (M06653; heat-induced epitope retrieval by 1 mM EDTA in 10mM Tris



Immunohistochemical staining of paraffin-embedded Carcinoma of Human pancreas tissue using anti-SYNM mouse monoclonal antibody. (M06653; heat-induced epitope retrieval by 1 mM EDTA in 10mM Tris



Immunohistochemical staining of paraffin-embedded Human lymphoma tissue using anti-SYNM mouse monoclonal antibody. (M06653; heat-induced epitope retrieval by 1 mM EDTA in 10mM Tris



Immunohistochemical staining of paraffin-embedded Carcinoma of Human liver tissue using anti-SYNM mouse monoclonal antibody. (M06653; heat-induced epitope retrieval by 1 mM EDTA in 10mM Tris

## Submit a product review to Biocompare.com

Submit a review of this product to Biocompare.com to receive a \$20 Amazon.com giftcard! Your reviews help your fellow scientists make the right decisions. Thank you for your contribution.



Anti-Desmuslin (SYNM) Mouse Monoclonal Antibody [Clone ID: OTI7H6]

For Research Use Only. Not for use in diagnostic procedures.