

Anti-NFE2L1 monoclonal Antibody

Catalog Number: M06662

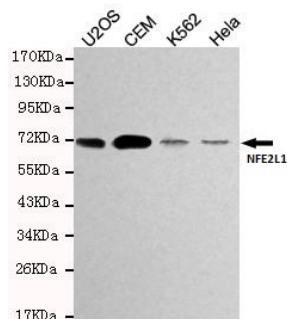
Overview

Product Name	Anti-NFE2L1 monoclonal Antibody
Reactive Species	Human
Description	Boster Bio Anti-NFE2L1 monoclonal Antibody catalog # M06662. Tested in WB applications. This antibody reacts with Human.
Application	WB
Clonality	Monoclonal 8E7A11 / 8C2F4
Formulation	1mg/ml in PBS with 0.02% sodium azide, 50% glycerol, pH7.2
Storage Instructions	Store at -20°C for one year. For short term storage and frequent use, store at 4°C for up to one month. Avoid repeated freeze-thaw cycles.
Host	Mouse
Uniprot ID	Q14494

Technical Details

Immunogen	Recombinant full length Human NFE2L1.
Isotype	IgG
Form	Liquid
Concentration	1 mg/ml
Purification	The antibody was affinity-purified from mouse ascites by affinity-chromatography using epitope-specific immunogen and the purity is > 95% (by SDS-PAGE).
Suggested Dilutions	WB: 1:1000

Anti-NFE2L1 monoclonal Antibody (M06662) Images



Western blot detection of NFE2L1 in HeLa, K562, CEM&U2OS cell lysates using NFE2L1 antibody (1:1000 diluted) .

Submit a product review to Biocompare.com

Submit a review of this product to Biocompare.com to receive a \$20 Amazon.com giftcard! Your reviews help your fellow scientists make the right decisions. Thank you for your contribution.



Anti-NFE2L1 monoclonal Antibody

For Research Use Only. Not for use in diagnostic procedures.