

Anti-SHARPIN Mouse Monoclonal Antibody [Clone ID: OTI1F4]

Catalog Number: M06687

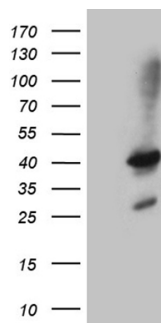
Overview

| | |
|----------------------|--|
| Product Name | Anti-SHARPIN Mouse Monoclonal Antibody [Clone ID: OTI1F4] |
| Reactive Species | Human |
| Description | Boster Bio SHARPIN mouse monoclonal antibody, clone OTI1F4. Catalog# M06687. Tested in WB. This antibody reacts with Human. |
| Application | WB |
| Clonality | Monoclonal OTI1F4 |
| Formulation | PBS (pH 7.3) containing 1% stabilizing protein, 50% glycerol and 0.02% sodium azide. This antibody is supplied in a stabilized formulation. Compatibility with conjugation reactions depends on the chemistry of the conjugation method used. For conjugation methods that are not compatible with the stabilizing components present in this formulation, a carrier-free antibody format is required. |
| Storage Instructions | Store at -20°C as received. |
| Host | Mouse |
| Uniprot ID | Q9H0F6 |

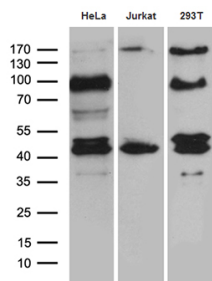
Technical Details

| | |
|---------------------|--|
| Immunogen | Human recombinant protein fragment corresponding to amino acids 1-326 of human SHARPIN (NP_112236) produced in E.coli. |
| Isotype | IgG1 |
| Concentration | 1 mg/ml |
| Purification | Purified from mouse ascites fluids or tissue culture supernatant by affinity chromatography (protein A/G) |
| Suggested Dilutions | WB 1:500~2000 |

Anti-SHARPIN Mouse Monoclonal Antibody [Clone ID: OTI1F4] (M06687) Images



HEK293T cells were transfected with the pCMV6-ENTRY control (Left lane) or pCMV6-ENTRY SHARPIN (Right lane) cDNA for 48 hrs and lysed. Equivalent amounts of cell lysates (5 ug per lane) were separated by SDS-PAGE and immunoblotted with anti-SHARPIN (1:2000).



Western blot analysis of extracts (35ug) from 3 different cell lines by using anti-SHARPIN monoclonal antibody (1:500).

Submit a product review to [Biocompare.com](https://www.biocompare.com)

Submit a review of this product to [Biocompare.com](https://www.biocompare.com) to receive a \$20 Amazon.com giftcard! Your reviews help your fellow scientists make the right decisions. Thank you for your contribution.



Anti-SHARPIN Mouse Monoclonal Antibody [Clone ID: OTI1F4]

For Research Use Only. Not for use in diagnostic procedures.