

## Anti-PTGES2 Mouse Monoclonal Antibody [Clone ID: OTI2C3]

Catalog Number: M06706

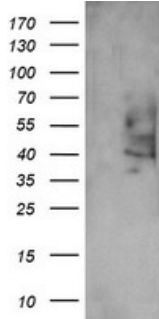
### Overview

Product Name	Anti-PTGES2 Mouse Monoclonal Antibody [Clone ID: OTI2C3]
Reactive Species	Human
Description	Boster Bio PTGES2 mouse monoclonal antibody, clone OTI2C3 (formerly 2C3). Catalog# M06706. Tested in IF, IHC, WB. This antibody reacts with Human.
Application	IF, IHC, WB
Clonality	Monoclonal OTI2C3
Formulation	PBS (pH 7.3) containing 1% stabilizing protein, 50% glycerol and 0.02% sodium azide. This antibody is supplied in a stabilized formulation. Compatibility with conjugation reactions depends on the chemistry of the conjugation method used. For conjugation methods that are not compatible with the stabilizing components present in this formulation, a carrier-free antibody format is required.
Storage Instructions	Store at -20°C as received.
Host	Mouse
Uniprot ID	Q9H7Z7

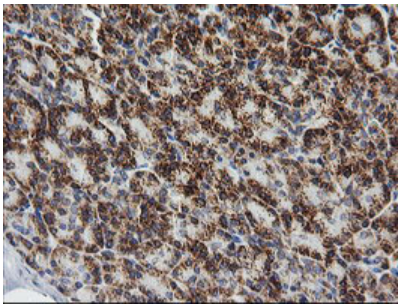
### Technical Details

Immunogen	Full length human recombinant protein of human PTGES2 (NP_079348) produced in HEK293T cell.
Isotype	IgG2a
Concentration	1 mg/ml
Purification	Purified from mouse ascites fluids or tissue culture supernatant by affinity chromatography (protein A/G)
Suggested Dilutions	WB: 1:2000 IHC: 1:150 IF: 1:100

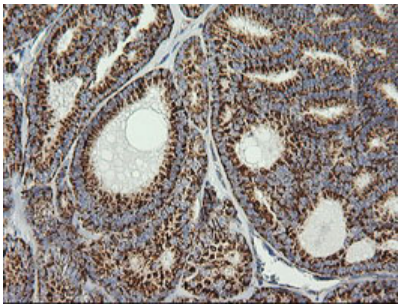
## Anti-PTGES2 Mouse Monoclonal Antibody [Clone ID: OTI2C3] (M06706) Images



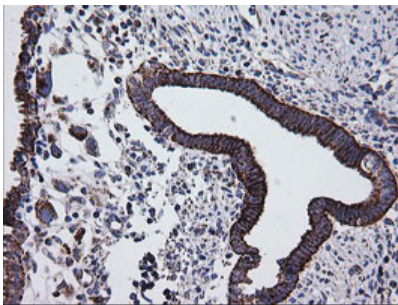
HEK293T cells were transfected with the pCMV6-ENTRY control (Left lane) or pCMV6-ENTRY PTGES2 (Right lane) cDNA for 48 hrs and lysed. Equivalent amounts of cell lysates (5 ug per lane) were separated by SDS-PAGE and immunoblotted with anti-PTGES2.



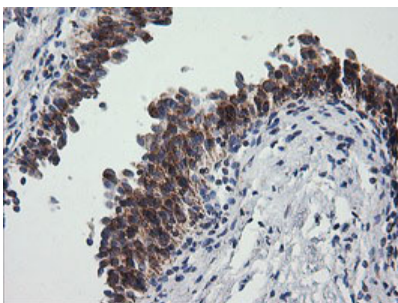
Immunohistochemical staining of paraffin-embedded Human pancreas tissue within the normal limits using anti-PTGES2 mouse monoclonal antibody. (Heat-induced epitope retrieval by 10mM citric buffer)



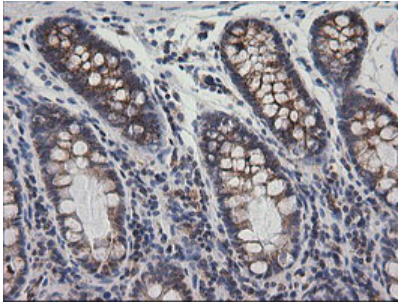
Immunohistochemical staining of paraffin-embedded Carcinoma of Human thyroid tissue using anti-PTGES2 mouse monoclonal antibody. (Heat-induced epitope retrieval by 10mM citric buffer)



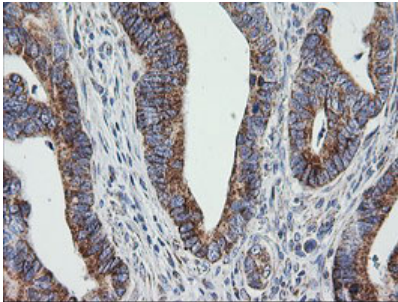
Immunohistochemical staining of paraffin-embedded Human endometrium tissue within the normal limits using anti-PTGES2 mouse monoclonal antibody. (Heat-induced epitope retrieval by 10mM citric buffer)



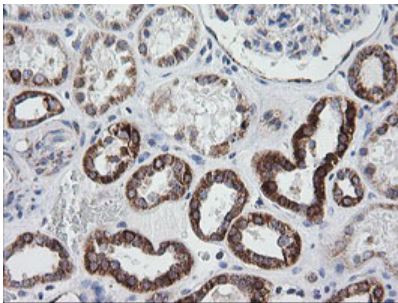
Immunohistochemical staining of paraffin-embedded Human bladder tissue within the normal limits using anti-PTGES2 mouse monoclonal antibody. (Heat-induced epitope retrieval by 10mM citric buffer)



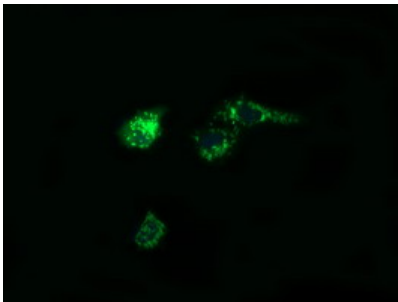
Immunohistochemical staining of paraffin-embedded Human colon tissue within the normal limits using anti-PTGES2 mouse monoclonal antibody. (Heat-induced epitope retrieval by 10mM citric buffer)



Immunohistochemical staining of paraffin-embedded Adenocarcinoma of Human colon tissue using anti-PTGES2 mouse monoclonal antibody. (Heat-induced epitope retrieval by 10mM citric buffer)



Immunohistochemical staining of paraffin-embedded Human Kidney tissue within the normal limits using anti-PTGES2 mouse monoclonal antibody. (Heat-induced epitope retrieval by 10mM citric buffer)



Anti-PTGES2 mouse monoclonal antibody (M06706) immunofluorescent staining of COS7 cells transiently transfected by pCMV6-ENTRY PTGES2.

## Submit a product review to [Biocompare.com](https://www.biocompare.com)

Submit a review of this product to [Biocompare.com](https://www.biocompare.com) to receive a \$20 Amazon.com giftcard! Your reviews help your fellow scientists make the right decisions. Thank you for your contribution.



Anti-PTGES2 Mouse Monoclonal Antibody [Clone ID: OT12C3]

For Research Use Only. Not for use in diagnostic procedures.