

Anti-PI 3 Kinase p55 gamma PIK3R3 Rabbit Monoclonal Antibody

Catalog Number: M06707

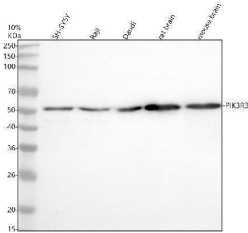
Overview

Product Name	Anti-PI 3 Kinase p55 gamma PIK3R3 Rabbit Monoclonal Antibody
Reactive Species	Human, Mouse, Rat
Description	Boster Bio Anti-PI 3 Kinase p55 gamma PIK3R3 Rabbit Monoclonal Antibody catalog # M06707. Tested in WB, IHC, ICC/IF applications. This antibody reacts with Human, Mouse, Rat.
Application	IF, IHC, ICC, WB
Clonality	Monoclonal DHC-16
Formulation	Rabbit IgG in stabilizing components, phosphate buffered saline, pH 7.4, 150mM NaCl, 0.02% sodium azide and 50% glycerol. *This antibody is supplied in a stabilized formulation. Compatibility with conjugation reactions depends on the chemistry of the conjugation method used. For conjugation methods that are not compatible with the stabilizing components present in this formulation, a carrier-free antibody format is required.
Storage Instructions	Store at -20°C for one year. For short term storage and frequent use, store at 4°C for up to one month. Avoid repeated freeze-thaw cycles.
Host	Rabbit
Uniprot ID	Q92569

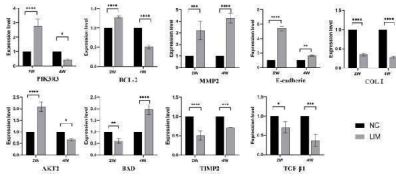
Technical Details

Immunogen	A synthesized peptide derived from human PI 3 Kinase p55 gamma
Isotype	Rabbit IgG
Form	Liquid
Concentration	0.5mg/ml
Purification	Affinity-chromatography
Suggested Dilutions	WB 1:500-2000 IHC 1:50-200 ICC/IF 1:50-200

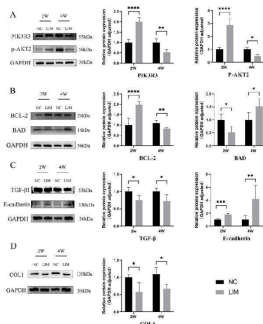
Anti-PI 3 Kinase p55 gamma PIK3R3 Rabbit Monoclonal Antibody (M06707) Images



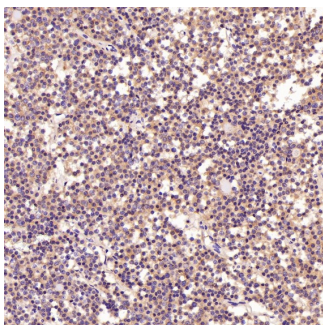
Western blot analysis of PIK3R3 using anti-PIK3R3 antibody (M06707). Electrophoresis was performed on a 10% SDS-PAGE gel at 80V (Stacking gel) / 120V (Resolving gel) for 2 hours. The sample well of each lane was loaded with 30 ug of sample under reducing conditions. Lane 1: human SH-SY5Y whole cell lysates, Lane 2: human Raji whole cell lysates, Lane 3: human Daudi whole cell lysates, Lane 4: rat brain tissue lysates, Lane 5: mouse brain tissue lysates. After electrophoresis, proteins were transferred to a nitrocellulose membrane at 150 mA for 50-90 minutes. Blocked the membrane with 5% non-fat milk/TBS for 1.5 hour at RT. The membrane was incubated with rabbit anti-PIK3R3 antigen affinity purified monoclonal antibody (M06707) at 1:500 overnight at 4°C, then washed with TBS-0.1%Tween 3 times with 5 minutes each and probed with a goat anti-rabbit IgG-HRP secondary antibody at a dilution of 1:5000 for 1.5 hour at RT. The signal is developed using an ECL Plus Western Blotting Substrate (Catalog # AR1196-200) with Tanon 5200 system. A specific band was detected for PIK3R3 at approximately 50 kDa. The expected band size for PIK3R3 is at 50 kDa.



Determination of the relative gene expression. The levels of PIK3R3, AKT2, TGF-beta1, E-cadherin, MMP2, TIMP2, BAD, BCL-2, and COL1 were detected by qPCR after myopia induction. Significance refers to comparisons of the LIM group to the NC group (* p < 0.05)

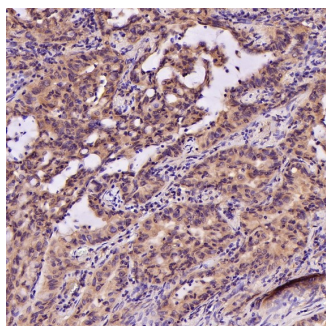


The relevant protein expression measured by western blot analysis. After 2- and 4-week myopia induction, expression of PIK3R3 and p-AKT2 (A), BAD and BCL-2 (B), TGF-beta1 and E-cadherin (C), and COL1 (D) in the sclera of the guinea pigs in the NC and LIM groups were detected by western blot analysis. Significance refers to comparisons of the LIM group to the NC group (* p < 0.05)

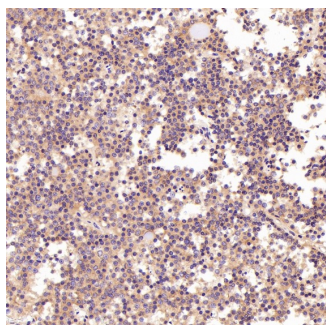


Immunohistochemical analysis of paraffin-embedded Human pituitary tumor, using the Antibody at 1:200 dilution.

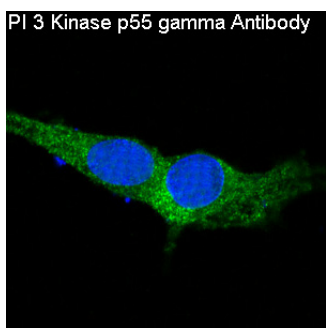
Immunohistochemical analysis of paraffin-embedded Human



lung adenocarcinoma, using the Antibody at 1:200 dilution.



Immunohistochemical analysis of paraffin-embedded Human pituitary tumor, using the Antibody at 1:800 dilution.



PI 3 Kinase p55 gamma Antibody

Immunofluorescent analysis of C6 cells, using PI 3 Kinase p55 gamma Antibody .

Submit a product review to Biocompare.com

Submit a review of this product to Biocompare.com to receive a \$20 Amazon.com giftcard! Your reviews help your fellow scientists make the right decisions. Thank you for your contribution.



Anti-PI 3 Kinase p55 gamma PIK3R3 Rabbit Monoclonal Antibody

For Research Use Only. Not for use in diagnostic procedures.