

## Anti-PDE1A Mouse Monoclonal Antibody [Clone ID: OTI7D5]

Catalog Number: M06723

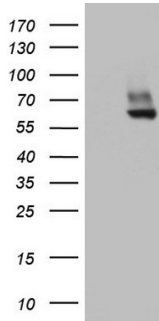
### Overview

Product Name	Anti-PDE1A Mouse Monoclonal Antibody [Clone ID: OTI7D5]
Reactive Species	Human, Mouse, Rat
Description	Boster Bio PDE1A mouse monoclonal antibody, clone OTI7D5 (formerly 7D5). Catalog# M06723. Tested in IHC, WB. This antibody reacts with Human, Mouse, Rat.
Application	IHC, WB
Clonality	Monoclonal OTI7D5
Formulation	PBS (pH 7.3) containing 1% stabilizing protein, 50% glycerol and 0.02% sodium azide. This antibody is supplied in a stabilized formulation. Compatibility with conjugation reactions depends on the chemistry of the conjugation method used. For conjugation methods that are not compatible with the stabilizing components present in this formulation, a carrier-free antibody format is required.
Storage Instructions	Store at -20°C as received.
Host	Mouse
Uniprot ID	P54750

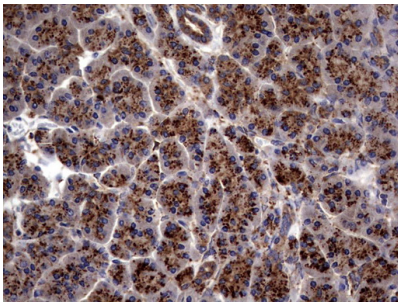
### Technical Details

Immunogen	Human recombinant protein fragment corresponding to amino acids 259-545 of human PDE1A (NP_005010) produced in E.coli.
Isotype	IgG2a
Concentration	1 mg/ml
Purification	Purified from mouse ascites fluids or tissue culture supernatant by affinity chromatography (protein A/G)
Suggested Dilutions	WB 1:2000 IHC 1:150

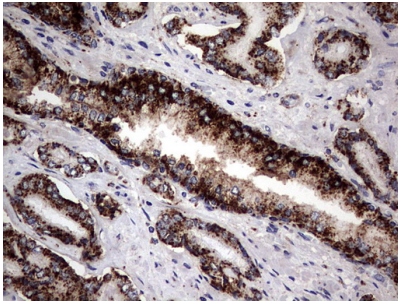
## Anti-PDE1A Mouse Monoclonal Antibody [Clone ID: OTI7D5] (M06723) Images



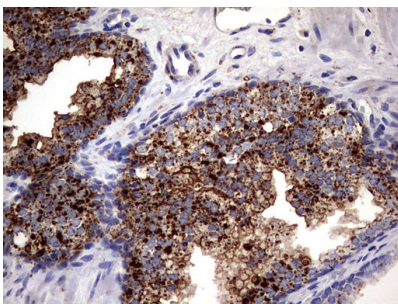
HEK293T cells were transfected with the pCMV6-ENTRY control (Left lane) or pCMV6-ENTRY PDE1A (Right lane) cDNA for 48 hrs and lysed. Equivalent amounts of cell lysates (5 ug per lane) were separated by SDS-PAGE and immunoblotted with anti-PDE1A.



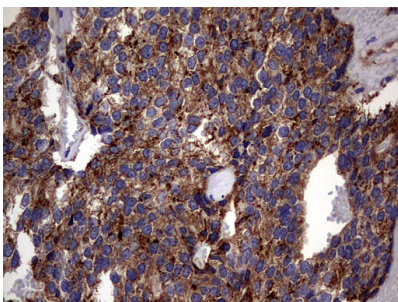
Immunohistochemical staining of paraffin-embedded Human pancreas tissue within the normal limits using anti-PDE1A mouse monoclonal antibody. (Heat-induced epitope retrieval by 1 mM EDTA in 10mM Tris)



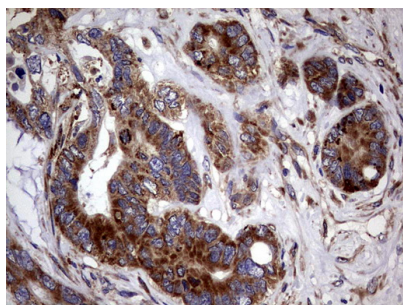
Immunohistochemical staining of paraffin-embedded Human prostate tissue within the normal limits using anti-PDE1A mouse monoclonal antibody. (Heat-induced epitope retrieval by 1 mM EDTA in 10mM Tris)



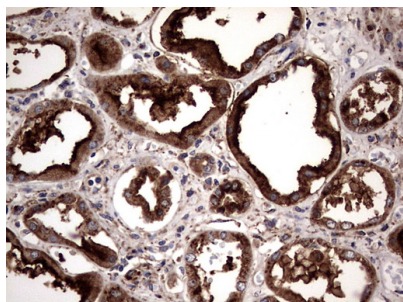
Immunohistochemical staining of paraffin-embedded Carcinoma of Human prostate tissue using anti-PDE1A mouse monoclonal antibody. (Heat-induced epitope retrieval by 1 mM EDTA in 10mM Tris)



Immunohistochemical staining of paraffin-embedded Adenocarcinoma of Human breast tissue using anti-PDE1A mouse monoclonal antibody. (Heat-induced epitope retrieval by 1 mM EDTA in 10mM Tris)



Immunohistochemical staining of paraffin-embedded Adenocarcinoma of Human colon tissue using anti-PDE1A mouse monoclonal antibody. (Heat-induced epitope retrieval by 1 mM EDTA in 10mM Tris)



Immunohistochemical staining of paraffin-embedded Human Kidney tissue within the normal limits using anti-PDE1A mouse monoclonal antibody. (Heat-induced epitope retrieval by 1 mM EDTA in 10mM Tris)

## Submit a product review to Biocompare.com

Submit a review of this product to Biocompare.com to receive a \$20 Amazon.com giftcard! Your reviews help your fellow scientists make the right decisions. Thank you for your contribution.



Anti-PDE1A Mouse Monoclonal Antibody [Clone ID: OTI7D5]

For Research Use Only. Not for use in diagnostic procedures.