

Anti-MLF1 Antibody (C-term)

Catalog Number: M06772

About MLF1

Involved in lineage commitment of primary hemopoietic progenitors by restricting erythroid formation and enhancing myeloid formation. Interferes with erythropoietin-induced erythroid terminal differentiation by preventing cells from exiting the cell cycle through suppression of CDKN1B/p27Kip1 levels. Suppresses RFW2/COP1 activity via CSN3 which activates p53 and induces cell cycle arrest. Binds DNA and affects the expression of a number of genes so may function as a transcription factor in the nucleus.

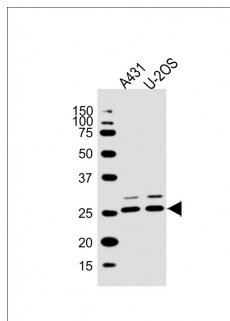
Overview

Product Name	Anti-MLF1 Antibody (C-term)
Reactive Species	Human
Description	Boster Bio Anti-MLF1 Antibody (C-term) (Catalog # M06772). Tested in WB application(s). This antibody reacts with Human.
Application	WB
Clonality	Polyclonal
Formulation	Purified polyclonal antibody supplied in PBS with 0.09% (W/V) sodium azide.
Storage Instructions	Maintain refrigerated at 2-8°C for up to 2 weeks. For long-term storage, store at -20°C in small aliquots to prevent freeze-thaw cycles.
Host	Rabbit
Uniprot ID	P58340

Technical Details

Immunogen	This MLF1 antibody is generated from a rabbit immunized with a KLH conjugated synthetic peptide between 216-250 amino acids from the C-terminal region of human MLF1.
Predicted Reactive Species	Mouse
Isotype	Rabbit IgG
Purification	This antibody is purified through a protein A column, followed by peptide affinity purification.
Suggested Dilutions	WB: 1:2000

Anti-MLF1 Antibody (C-term) (M06772) Images



All lanes : Anti-MLF1 Antibody (C-term) at 1:2000 dilution
Lane 1: A431 whole cell lysate
Lane 2: U-2OS whole cell lysate
Lysates/proteins at 20 μ g per lane. Secondary Goat Anti-Rabbit IgG, (H+L), Peroxidase conjugated at 1/10000 dilution. Predicted band size : 31 kDa
Blocking/Dilution buffer: 5% NFDM/TBST.

Submit a product review to Biocompare.com

Submit a review of this product to Biocompare.com to receive a \$20 Amazon.com giftcard! Your reviews help your fellow scientists make the right decisions. Thank you for your contribution.



Anti-MLF1 Antibody (C-term)

For Research Use Only. Not for use in diagnostic procedures.