

Anti-(Mouse) Mlf1 Antibody (Center)

Catalog Number: M06772-1

About Mlf1

Involved in lineage commitment of primary hemopoietic progenitors by restricting erythroid formation and enhancing myeloid formation. Interferes with erythropoietin-induced erythroid terminal differentiation by preventing cells from exiting the cell cycle through suppression of CDKN1B/p27Kip1 levels. Suppresses RFW2/COP1 activity via CSN3 which activates p53 and induces cell cycle arrest. Binds DNA and affects the expression of a number of genes so may function as a transcription factor in the nucleus.

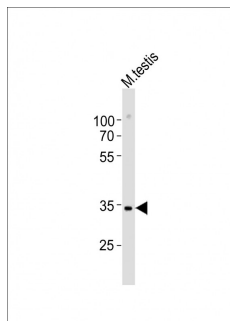
Overview

Product Name	Anti-(Mouse) Mlf1 Antibody (Center)
Reactive Species	Mouse
Description	Boster Bio Anti-(Mouse) Mlf1 Antibody (Center) (Catalog # M06772-1). Tested in WB application(s). This antibody reacts with Mouse.
Application	WB
Clonality	Polyclonal
Formulation	Purified polyclonal antibody supplied in PBS with 0.09% (W/V) sodium azide.
Storage Instructions	Maintain refrigerated at 2-8°C for up to 2 weeks. For long-term storage, store at -20°C in small aliquots to prevent freeze-thaw cycles.
Host	Rabbit
Uniprot ID	Q9QWV4

Technical Details

Immunogen	This Mouse Mlf1 antibody is generated from a rabbit immunized with a KLH conjugated synthetic peptide between 91-126 amino acids from the Central region of Mouse Mlf1.
Predicted Reactive Species	Mouse
Isotype	Rabbit IgG
Purification	This antibody is purified through a protein A column, followed by peptide affinity purification.
Suggested Dilutions	WB: 1:500

Anti-(Mouse) Mlf1 Antibody (Center) (M06772-1) Images



Anti-Mlf1 Antibody (Center) at 1:500 dilution + mouse testis lysates. Lysates/proteins at 20 µg per lane. Secondary Goat Anti-Rabbit IgG, (H+L), Peroxidase conjugated at 1/10000 dilution. Predicted band size : 30 kDa. Blocking/Dilution buffer: 5% NFD/MTBST.

Submit a product review to Biocompare.com

Submit a review of this product to Biocompare.com to receive a \$20 Amazon.com giftcard! Your reviews help your fellow scientists make the right decisions. Thank you for your contribution.



Anti-(Mouse) Mlf1 Antibody (Center)

For Research Use Only. Not for use in diagnostic procedures.