

Anti-Junctophilin 2 (JPH2) Mouse Monoclonal Antibody [Clone ID: OTI1F5]

Catalog Number: M06785

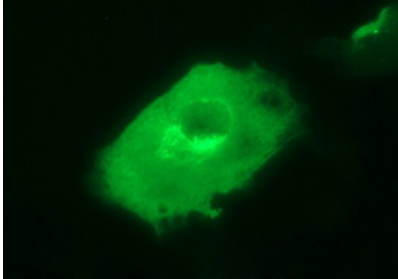
Overview

Product Name	Anti-Junctophilin 2 (JPH2) Mouse Monoclonal Antibody [Clone ID: OTI1F5]
Reactive Species	Human, Mouse, Rat
Description	Boster Bio JPH2 mouse monoclonal antibody, clone OTI1F5 (formerly 1F5). Catalog# M06785. Tested in IF, WB. This antibody reacts with Human, Mouse, Rat.
Conjugate	Unconjugated
Application	IF, WB
Clonality	Monoclonal OTI1F5
Formulation	PBS (pH 7.3) containing 1% stabilizing protein, 50% glycerol and 0.02% sodium azide. This antibody is supplied in a stabilized formulation. Compatibility with conjugation reactions depends on the chemistry of the conjugation method used. For conjugation methods that are not compatible with the stabilizing components present in this formulation, a carrier-free antibody format is required.
Storage Instructions	Store at -20°C for one year. For short term storage and frequent use, store at 4°C for up to one month. Avoid repeated freeze-thaw cycles.
Host	Mouse
Uniprot ID	Q9BR39

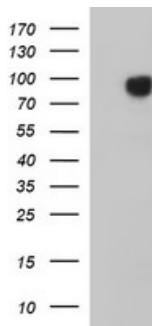
Technical Details

Immunogen	Full length human recombinant protein of human JPH2 (NP_065166) produced in HEK293T cell.
Isotype	IgG1
Concentration	1 mg/ml
Purification	Purified from mouse ascites fluids or tissue culture supernatant by affinity chromatography (protein A/G)
Suggested Dilutions	WB 1:4000 IF 1:100

Anti-Junctophilin 2 (JPH2) Mouse Monoclonal Antibody [Clone ID: OTI1F5] (M06785) Images



Anti-JPH2 mouse monoclonal antibody (M06785) immunofluorescent staining of COS7 cells transiently transfected by pCMV6-ENTRY JPH2.



HEK293T cells were transfected with the pCMV6-ENTRY control (Left lane) or pCMV6-ENTRY JPH2 (Right lane) cDNA for 48 hrs and lysed. Equivalent amounts of cell lysates (5 ug per lane) were separated by SDS-PAGE and immunoblotted with anti-JPH2.

Submit a product review to [Biocompare.com](https://www.biocompare.com)

Submit a review of this product to [Biocompare.com](https://www.biocompare.com) to receive a \$20 Amazon.com giftcard! Your reviews help your fellow scientists make the right decisions. Thank you for your contribution.



Anti-Junctophilin 2 (JPH2) Mouse Monoclonal Antibody [Clone ID: OTI1F5]

For Research Use Only. Not for use in diagnostic procedures.