

Anti-Peripherin 1 PRPH Monoclonal Antibody

Catalog Number: M06787

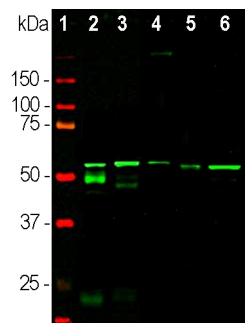
Overview

Product Name	Anti-Peripherin 1 PRPH Monoclonal Antibody
Reactive Species	Bovine, Human, Mouse, Pig, Rat
Description	Boster Bio Anti-Peripherin 1 PRPH Monoclonal Antibody catalog # M06787. Tested in IF, ICC, IHC, WB applications. This antibody reacts with Bovine, Human, Mouse, Pig, Rat.
Application	IF, IHC, ICC, WB
Clonality	Monoclonal
Formulation	Purified antibody at 1mg/mL in 50% PBS, 50% glycerol plus 5mM NaN ₃
Storage Instructions	Store at -20°C for one year. For short term storage and frequent use, store at 4°C for up to one month. Avoid repeated freeze-thaw cycles.
Host	Mouse
Uniprot ID	P41219

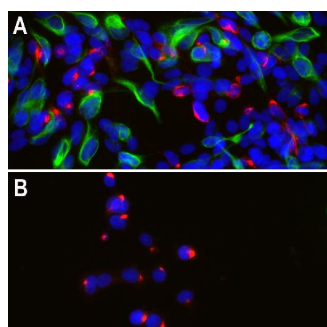
Technical Details

Immunogen	Recombinant rat peripherin purified from E. coli
Concentration	0.5-1mg/ml, actual concentration vary by lot. Use suggested dilution ratio to decide dilution procedure.
Suggested Dilutions	<p>Dilute the sample so that the expected range of concentrations fall within the detection range of this kit.</p> <p>If the expected range of concentration is unknown, a pilot test should be conducted to decide the optimal dilution ratio for your samples.</p> <p>Some PubMed article(s) citing the expression level of this target are as follows:</p> <p>Boster Bio's internal QC testing used:</p> <p>WB: 1:5,000. ICC/IF and IHC: 1:500.</p>

Anti-Peripherin 1 PRPH Monoclonal Antibody (M06787) Images



Western blot analysis of tissue and cell lysates probed with mouse mAb to peripherin, M06787, dilution 1:500 in green: [1] protein standard (red), [2] mouse spinal cord, [3] rat spinal cord, [4] cow spinal cord, [5] SH-SY5Y cells, and [6] PC12 cells. The band at ~57kDa corresponds to the peripherin protein. Bands at 50 and 25kDa detected in the mouse spinal cord lysate, correspond to the heavy and light chains of mouse IgG.



Immunofluorescent analysis of human neuroblastoma cell line SH-SY5Y (A) and rat cell line PC12 (B), stained with mouse mAb to peripherin, M06787, dilution 1:500, in red, and costained with chicken pAb to vimentin, dilution 1:10,000, in green. The blue is DAPI staining of nuclear DNA. Peripherin, one of the Class III family of intermediate filament (IF) subunit proteins is revealed by M06787 antibody in the perinuclear region in some SH-SY5Y cells and in all PC12 cells. Vimentin, a protein also in the Class III IF family, is detected in a subpopulation of SH-SY5Y cells which are negative for peripherin. PC12 cells express peripherin but not

Submit a product review to Biocompare.com

Submit a review of this product to Biocompare.com to receive a \$20 Amazon.com giftcard! Your reviews help your fellow scientists make the right decisions. Thank you for your contribution.



Anti-Peripherin 1 PRPH Monoclonal Antibody